

**TracPipe Submittal Drawings**

<b>Doc No.</b>	<b>Description</b>	<b>Applicable P/N(s)</b>
FGP-SUB-CPG	Submittals Cover Page	N/A
FGP-SUB-001	TracPipe Gas Piping, 3/8" through 2"	FGP-SS4-XXX
FGP-SUB-002	Counterstrike Gas Piping, 3/8" through 2"	FGP-CS-XXX
FGP-SUB-003	TracPipe PS-II Gas Piping, 3/8" through 2"	FGP-UGP-XXX
FGP-SUB-004	AutoFlare Straight Fitting Assy	FGP-FST-XXX
FGP-SUB-005	AutoFlare Female Straight Fitting Assy	FGP-FSTF-XXX
FGP-SUB-006	AutoFlare Coupling Assy	FGP-CPLG-XXX
FGP-SUB-007	Flange Fitting Assy	FGP-BFF-XXX
FGP-SUB-008	Flange L Bracket	FGP-TERM-BRAC
FGP-SUB-009	90 Flange Fitting Assy	FGP-ELLB-XXX
FGP-SUB-010	90 Flange Valve Assy	FGP-BF90V-XXX
FGP-SUB-011	Termination Mount Assy	FGP-TM-XXX
FGP-SUB-012	90 Termination Mount Assy	FGP-90TM-XXX
FGP-SUB-013	90 Termination Valve Assy	FGP-TM90V-XXX
FGP-SUB-014	AutoFlare x Pipe NPT Tee	FGP-TXXX-XXX
FGP-SUB-015	AutoFlare Tee Assy	FGP-TFXXX-TXXX / FGP-RT-XXX
FGP-SUB-016	Key Valve Bracket Assy	FGP-KVB-XXX
FGP-SUB-017	Meter Termination Stub-out M-NPT	FGP-XXX MT
FGP-SUB-018	Meter Stub Bracket	FGP-STUD-BRAC
FGP-SUB-019	Appliance Stub-out M-NPT	FGP-ASP-500
FGP-SUB-020	Fireplace Stub-out M-NPT	FGP-FPT-500
FGP-SUB-021	Meter Termination TracPipe	FGP-MTX-XXX
FGP-SUB-022	Meter Termination Bracket	FGP-MT-BRAC
FGP-SUB-023	Metal Wall Box w/ Valve Assy	FGP-WBTM-XXX
FGP-SUB-024	Manifolds FGP-MI-SIZE	FGP-MI-PC, PC-1X, PC-2X
FGP-SUB-025	Manifold Bracket	FGP-MB2
FGP-SUB-026	Stackable Manifold	FGP-MI-ST-XXX
FGP-SUB-027	Stackable Manifold Bracket	FGP-MB-ST
FGP-SUB-028	Load Center w/ Manifold Bracket	FGP-LC
FGP-SUB-029	Bonding Clamps	FGP-GC-X
FGP-SUB-030	PS-II Coupling Assy	FGP-UGF-XXX
FGP-SUB-031	PS-II Adapter Assy	FGP-UGC-XXX
FGP-SUB-032	Striker Plates	FGP-SP-XXX
FGP-SUB-033	Ball Valve 5 psi	FGP-WBV-XXX
FGP-SUB-034	Quick Disconnect	FGP-QDS
FGP-SUB-035	Excess Flow Valve	FGP-AFD-XXX / FGP-LFD-XXX
FGP-SUB-036	90 deg Appliance Stub-out	FGP-ASP90S-XXX
FGP-SUB-037	AutoSnap Straight Fitting Assy.	FGP-SFST-XXX
FGP-SUB-038	AutoSnap Female Fitting	FGP-SFSTF-XXX
FGP-SUB-039	AutoSnap Coupling Assy.	FGP-SCPLG-XXX
FGP-SUB-040	AutoSnap Steel Flange Mount	FGP-SRFG-XXX
FGP-SUB-041	Metal Wall Box w/ AutoSnap Valve Assy	FGP-SWBTM-XXX
FGP-SUB-042	AutoSnap Tee X NPT	FGP-STXXX-XXX
FGP-SUB-043	AutoSnap Tee Fitting Tubing X Tubing	FGP-STFXXX-TXXX / FGP-SRT-XXX
FGP-SUB-044	Self Bonding Silicone Tape - Black	FGP-915-10H-12BL
FGP-SUB-045	AutoFlare Steel Flange Mount	FGP-RFG-XXX
FGP-SUB-046	90 deg AutoSnap Steel Flange Mount	FGP-ELS-500
FGP-SUB-047	90 deg AutoSnap Steel Flange Mount w/ AutoSnap Valve Assy	FGP-RF90V-XXX
FGP-SUB-048	Self Bonding Silicone Tape - Yellow	FGP-915-XXX

# Submittal Package

Project:

Engineer:

Contractor:

Submitted by:

Date:

---

\*Gas Piping System(s) Included (check all that apply):

- TracPipe
- Counterstrike
- TracPipe PS-II

*\*Gas Piping System includes all related components attached*

**Product**

**TracPipe Flexible Gas Piping, 3/8" through 2"**

**Project Information**

Job Name:	Date Submitted:
Location:	Submitted By:
Engineer:	Approved By:
Contractor:	Manufacturer's Rep:

**Installation**

Must be installed in accordance with the TracPipe Design Guide and Installation Instructions and all applicable codes

**Application Information**

Yellow Jacketed Flexible Gas Piping for use in Natural Gas and Liquefied Petroleum (Propane) Gas applications. Used with TracPipe AutoFlare fittings and accessories.

**Technical Data**

Materials

Tubing	ASTM A240 300 Series Stainless Steel
Jacket	UV/Ozone Resistant Polyethylene with flame retardant

Pressure Ratings

Specification Operating Pressure	25 PSIG
CSA International Evaluation Report - Max Operating Pressure, 3/8" through 1-1/4"	125 PSIG

Temperature Ratings

Operating Temperature Range	-20 to 200 Deg F
Tubing Melting Point	2400 Deg F
Jacket Melting Point	350 Deg F



**Codes**

ICC Codes (IFGC, IRC, IMC, IPC), NFPA 54, UPC, CAN/CSA B149.1, NFPA 58

**Standards**

ANSI LC1 / CSA 6.26, UL 723 (ASTM E84), ANSI Z223.1

**Listings**

CSA, ICC PMG 1046, IAPMO (UPC) File No. 3682, UL (Through Penetration Firestop Systems)

**Dimensional Information**

✓	Size	*P/N	EHD	OD w/ Jacket (Nom. in.)	OD w/o Jacket (Nom. in.)	ID (Nom. In.)	Tubing Wall Thickness (in.)	Weight (lbs/ft)
<input type="checkbox"/>	3/8"	FGP-SS4-375-XXX	15	0.640	0.600	0.440	0.010	0.12
<input type="checkbox"/>	1/2"	FGP-SS4-500-XXX	19	0.828	0.788	0.597	0.010	0.16
<input type="checkbox"/>	3/4"	FGP-SS4-750-XXX	25	1.080	1.040	0.820	0.010	0.24
<input type="checkbox"/>	1"	FGP-SS4-100-XXX	31	1.355	1.315	1.060	0.010	0.31
<input type="checkbox"/>	1-1/4"	FGP-SS4-125-XXX	37	1.660	1.600	1.290	0.012	0.47
<input type="checkbox"/>	1-1/2"	FGP-SS4-150-XXX	46	1.900	1.840	1.525	0.012	0.56
<input type="checkbox"/>	2"	FGP-SS4-200-XXX	62	2.475	2.415	2.060	0.012	0.85

\*XXX - Denotes Reel size (length of pipe) in feet

Omega Flex, Inc. \* 451 Creamery Way\* Exton, PA 19341

Tel: 610-524-7272 \* Toll Free: 800-671-8622 \* Fax: 610-524-7282

www.omegaflex.com

**Product**

**CounterStrike Flexible Gas Piping, 3/8" through 2"**

**Project Information**

Job Name:	Date Submitted:
Location:	Submitted By:
Engineer:	Approved By:
Contractor:	Manufacturer's Rep:

**Installation**

Must be installed in accordance with the TracPipe Design Guide and Installation Instructions and all applicable codes

**Application Information**

Conductive Jacketed Flexible Gas Piping for use in Natural Gas and Liquefied Petroleum (Propane) Gas applications. Used with TracPipe AutoFlare fittings and accessories.

**Technical Data**

Materials

Tubing	ASTM A240 300 Series Stainless Steel
Jacket	UV/Ozone Resistant Polyethylene with flame retardent

Pressure Ratings

Specification Operating Pressure	25 PSIG
CSA International Evaluation Report - Max Operating Pressure, 3/8" through 1-1/4"	125 PSIG

Temperature Ratings

Operating Temperature Range	-20 to 200 Deg F
Tubing Melting Point	2400 Deg F
Jacket Melting Point	350 Deg F



**Codes**

ICC Codes (IFGC, IRC, IMC, IPC), NFPA 54, UPC, CAN/CSA B149.1, NFPA 58

**Standards**

ANSI LC1 / CSA 6.26, UL 723 (ASTM E84), ICC LC 1024, ANSI Z223.1

**Listings**

CSA, ICC PMG 1058, UL (Through Penetration Firestop Systems), IAPMO ES ER-0227

**Dimensional Information**

✓	Size	*P/N	EHD	OD w/ Jacket (Nom. in.)	OD w/o Jacket (Nom. in.)	ID (Nom. In.)	Tubing Wall Thickness (in.)	Weight (lbs/ft)
<input type="checkbox"/>	3/8"	FGP-CS-375-XXX	15	0.700	0.600	0.440	0.010	0.15
<input type="checkbox"/>	1/2"	FGP-CS-500-XXX	19	0.888	0.788	0.597	0.010	0.21
<input type="checkbox"/>	3/4"	FGP-CS-750-XXX	25	1.140	1.040	0.820	0.010	0.28
<input type="checkbox"/>	1"	FGP-CS-1000-XXX	31	1.415	1.315	1.060	0.010	0.39
<input type="checkbox"/>	1-1/4"	FGP-CS-1250-XXX	37	1.700	1.600	1.290	0.012	0.52
<input type="checkbox"/>	1-1/2"	FGP-CS-1500-XXX	46	1.940	1.840	1.525	0.012	0.73
<input type="checkbox"/>	2"	FGP-CS-2000-XXX	62	2.515	2.415	2.060	0.012	0.91

\*XXX - Denotes Reel size (length of pipe) in feet

Omega Flex, Inc. \* 451 Creamery Way\* Exton, PA 19341

Tel: 610-524-7272 \* Toll Free: 800-671-8622 \* Fax: 610-524-7282

www.omegaflex.com

**Product**

**TracPipe PS-II Flexible Gas Piping, 3/8" through 2"**

**Project Information**

Job Name:	Date Submitted:
Location:	Submitted By:
Engineer:	Approved By:
Contractor:	Manufacturer's Rep:

**Installation**

Must be installed in accordance with the TracPipe Design Guide and Installation Instructions and all applicable codes

**Application Information**

Black Jacketed "Pre-Sleeved" Flexible Gas Piping approved for direct burial in Underground Natural Gas and Liquefied Petroleum (Propane) Gas applications. Used with TracPipe PS-II Male Adapter fittings or Couplings.

**Technical Data**

Materials

Tubing	ASTM A240 300 Series Stainless Steel
Jacket	UV/Ozone Resistant Polyethylene

Pressure Ratings

Specification Operating Pressure	25 PSIG
CSA International Evaluation Report - Max Operating Pressure, 3/8" through 1-1/4"	125 PSIG

Temperature Ratings

Operating Temperature Range	-20 to 200 Deg F
Tubing Melting Point	2400 Deg F
Jacket Melting Point	350 Deg F



**Codes**

ICC Codes (IFGC, IRC, IMC, IPC), NFPA 54, UPC, CAN/CSA B149.1, NFPA 58

**Standards**

ANSI LC1 / CSA 6.26, ANSI Z223.1

**Listings**

CSA, ICC PMG 1052, IAPMO (UPC) File No. 4665

**Dimensional Information**

✓	Size	*P/N	EHD	OD w/ Jacket (Nom. in.)	OD w/o Jacket (Nom. in.)	ID (Nom. In.)	Tubing Wall Thickness (in.)	Weight (lbs/ft)
<input type="checkbox"/>	3/8"	FGP-UGP-375-XXX	15	0.820	0.600	0.440	0.010	0.23
<input type="checkbox"/>	1/2"	FGP-UGP-500-XXX	19	1.080	0.788	0.597	0.010	0.33
<input type="checkbox"/>	3/4"	FGP-UGP-750-XXX	25	1.320	1.040	0.820	0.010	0.43
<input type="checkbox"/>	1"	FGP-UGP-100-XXX	31	1.600	1.315	1.060	0.010	0.57
<input type="checkbox"/>	1-1/4"	FGP-UGP-125-XXX	37	1.960	1.600	1.290	0.012	0.91
<input type="checkbox"/>	1-1/2"	FGP-UGP-150-XXX	46	2.180	1.840	1.525	0.012	1.00
<input type="checkbox"/>	2"	FGP-UGP-200-XXX	62	2.800	2.415	2.060	0.012	1.47

\*XXX - Denotes Reel size (length of pipe) in feet

Omega Flex, Inc. \* 451 Creamery Way\* Exton, PA 19341

Tel: 610-524-7272 \* Toll Free: 800-671-8622 \* Fax: 610-524-7282

www.omegaflex.com

**Product**

**AutoFlare Straight Fitting (Male-NPT) Assembly for TracPipe and CounterStrike**

**Project Information**

Job Name:	Date Submitted:
Location:	Submitted By:
Engineer:	Approved By:
Contractor:	Manufacturer's Rep:

**Installation**

Must be installed in accordance with the TracPipe Design Guide and Installation Instructions and all applicable codes

**Application Information**

Transition fitting between TracPipe or CounterStrike Tubing and NPT thread. Fitting thread is Male NPT. For use indoor, outdoor, and concealed location applications.

**Technical Data**

Materials

Nut, Adapter, and Split Rings	Yellow Brass
Insert and 1" Split Rings	Stainless Steel

Pressure Ratings (used with tubing)

Specification Operating Pressure	25 PSIG
CSA International Evaluation Report - Max Operating Pressure, 3/8" through 1-1/4"	125 PSIG

Temperature Ratings (used with tubing)

Operating Temperature Range	-20 to 200 Deg F
-----------------------------	------------------



**Codes**

ICC Codes (IFGC, IRC, IMC, IPC), NFPA 54 , UPC, CAN/CSA B149.1, NFPA 58

**Standards**

ANSI LC1 / CSA 6.26. ANSI Z223.1

**Listings**

CSA, ICC PMG 1046 / 1058, IAPMO (UPC) File No. 3682 / ES ER-0227

**Dimensional Information**

✓	Size	P/N	Diameter across flats (Nom. in.)	Fitting length (Nom. in.)	TracPipe or CounterStrike Size	Male NPT Pipe size	Weight (lbs)
<input type="checkbox"/>	3/8"	FGP-FST-375N	1"	2"	3/8"	3/8"	0.3
<input type="checkbox"/>	3/8"x1/2"	FGP-FST-375	1"	2"	3/8"	1/2"	0.4
<input type="checkbox"/>	1/2"	FGP-FST-500	1-1/8"	2"	1/2"	1/2"	0.4
<input type="checkbox"/>	1/2"x3/4"	FGP-RST500-750	1-1/8"	2"	1/2"	3/4"	0.4
<input type="checkbox"/>	3/4"	FGP-FST-750	1-3/8"	2-1/8"	3/4"	3/4"	0.5
<input type="checkbox"/>	3/4"x1/2"	FGP-RST750-500	1-3/8"	2"	3/4"	1/2"	0.5
<input type="checkbox"/>	1"	FGP-FST-1000	1-5/8"	2-3/8"	1"	1"	0.7
<input type="checkbox"/>	1"x3/4"	FGP-RST1000-750	1-5/8"	2-1/8"	1"	3/4"	0.7
<input type="checkbox"/>	1-1/4"	FGP-FST-1250	2-1/8"	2-5/8"	1-1/4"	1-1/4"	1.5
<input type="checkbox"/>	1-1/2"	FGP-FST-1500	2-1/2"	3"	1-1/2"	1-1/2"	2.1
<input type="checkbox"/>	2"	FGP-FST-2000	3-1/4"	3-1/16"	2"	2"	3.5

Omega Flex, Inc. \* 451 Creamery Way\* Exton, PA 19341

Tel: 610-524-7272 \* Toll Free: 800-671-8622 \* Fax: 610-524-7282

www.omegaflex.com



**Product**

**AutoFlare Straight Fitting (Female-NPT) Assembly for TracPipe and CounterStrike**

**Project Information**

Job Name:	Date Submitted:
Location:	Submitted By:
Engineer:	Approved By:
Contractor:	Manufacturer's Rep:

**Installation**

Must be installed in accordance with the TracPipe Design Guide and Installation Instructions and all applicable codes

**Application Information**

Transition fitting between TracPipe or CounterStrike Tubing and NPT thread. Fitting thread is Female NPT. For use indoor, outdoor, and concealed location applications.

**Technical Data**

Materials

Nut, Adapter, and Split Rings	Yellow Brass
Insert and 1" Split Rings	Stainless Steel

Pressure Ratings (used with tubing)

Specification Operating Pressure	25 PSIG
CSA International Evaluation Report - Max Operating Pressure, 3/8" through 1-1/4"	125 PSIG

Temperature Ratings (used with tubing)

Operating Temperature Range	-20 to 200 Deg F
-----------------------------	------------------



**Codes**

ICC Codes (IFGC, IRC, IMC, IPC), NFPA 54, UPC, CAN/CSA B149.1, NFPA 58

**Standards**


ANSI LC1 / CSA 6.26 ANSI Z223.1

**Listings**

CSA, ICC PMG 1046 / 1058, IAPMO (UPC) File No. 3682 / ES ER-0227

**Dimensional Information**

✓			<i>Diameter across flats (Nom. in.)</i>	<i>Fitting length (Nom. in.)</i>	<i>TracPipe or CounterStrike Size</i>	<i>Female NPT Pipe size</i>	<i>Weight (lbs)</i>
<i>Size</i>	<i>P/N</i>						
<input type="checkbox"/> 3/8"x1/2"	FGP-FSTF-375	1"	1-7/16"	3/8"	1/2"	0.2	
<input type="checkbox"/> 1/2"	FGP-FSTF-500	1-1/8"	1-1/2"	1/2"	1/2"	0.3	
<input type="checkbox"/> 3/4"	FGP-FSTF-750	1-3/8"	1-3/4"	3/4"	3/4"	0.5	
<input type="checkbox"/> 1"	FGP-FSTF-1000	1-5/8"	1-3/4"	1"	1"	0.6	

<b>Product</b>						
<b>AutoFlare Coupling Assembly for TracPipe and CounterStrike</b>						
<b>Project Information</b>						
Job Name:			Date Submitted:			
Location:			Submitted By:			
Engineer:			Approved By:			
Contractor:			Manufacturer's Rep:			
<b>Installation</b>						
Must be installed in accordance with the TracPipe Design Guide and Installation Instructions and all applicable codes						
<b>Application Information</b>						
Coupling fitting for use between like sizes of TracPipe or CounterStrike Tubing. For indoor, outdoor, and concealed location applications.						
<b>Technical Data</b>						
<u>Materials</u>						
Nut, Adapter, and Split Rings		Yellow Brass				
Insert and 1" Split Rings		Stainless Steel				
<u>Pressure Ratings (used with tubing)</u>						
Specification Operating Pressure		25 PSIG CSA International Evaluation Report -				
Max Operating Pressure, 3/8" through 1-1/4"		125 PSIG				
<u>Temperature Ratings (used with tubing)</u>						
Operating Temperature Range		-20 to 200 Deg F				
						
<b>Codes</b>						
ICC Codes (IFGC, IRC, IMC, IPC), NFPA 54, UPC, CAN/CSA B149.1, NFPA 58						
<b>Standards</b>						
ANSI LC1 / CSA 6.26, ANSI Z223.1						
<b>Listings</b>						
CSA, ICC PMG 1046 / 1058, IAPMO (UPC) File No. 3682 / ES ER-0227						
<b>Dimensional Information</b>						
✓	Size	P/N	Diameter across flats (Nom. in.)	Fitting length (Nom. in.)	TracPipe or CounterStrike Size	Weight (lbs)
<input type="checkbox"/>	3/8"	FGP-CPLG-375	1"	2"	3/8" X 3/8"	0.3
<input type="checkbox"/>	1/2"	FGP-CPLG-500	1-1/8"	2-1/16"	1/2" X 1/2"	0.5
<input type="checkbox"/>	3/4"	FGP-CPLG-750	1-3/8"	2-1/4"	3/4" X 3/4"	0.7
<input type="checkbox"/>	1"	FGP-CPLG-1000	1-5/8"	2-11/32"	1" X 1"	0.9
<input type="checkbox"/>	1-1/4"	FGP-CPLG-1250	2-1/8"	2-7/8"	1-1/4" X 1-1/4"	2.0
<input type="checkbox"/>	1-1/2"	FGP-CPLG-1500	2-1/2"	3-3/8"	1-1/2" X 1-1/2"	3.3
<input type="checkbox"/>	2"	FGP-CPLG-2000	3-1/4"	3-5/8"	2" X 2"	5.5



**Product**

**Flange Fitting (Male- NPT) Assembly for TracPipe and CounterStrike**

**Project Information**

Job Name:	Date Submitted:
Location:	Submitted By:
Engineer:	Approved By:
Contractor:	Manufacturer's Rep:

**Installation**

Must be installed in accordance with the TracPipe Design Guide and Installation Instructions and all applicable codes

**Application Information**

Termination fitting between TracPipe or CounterStrike Tubing and NPT thread. Fitting thread is Male NPT. For use indoor, outdoor, and concealed location applications.

**Technical Data**

Materials

Nut, Adapter, Flange and Split Rings	Yellow Brass
Insert and 1" Split Rings	Stainless Steel

Pressure Ratings (used with tubing)

Specification Operating Pressure	25 PSIG
CSA International Evaluation Report - Max Operating Pressure, 3/8" through 1-1/4"	125 PSIG

Temperature Ratings (used with tubing)

Operating Temperature Range	-20 to 200 Deg F
-----------------------------	------------------



**Codes**

ICC Codes (IFGC, IRC, IMC, IPC), NFPA 54, UPC, CAN/CSA B149.1, NFPA 58

**Standards**

ANSI LC1 / CSA 6.26, ANSI 223.1

**Listings**

CSA, ICC PMG 1046 / 1058, IAPMO (UPC) File No. 3682 / ES ER-0227

**Dimensional Information**

✓	Size	P/N	Diameter across flats (Nom. in.)	Fitting length (Nom. in.)	TracPipe or CounterStrike Size	Flange Diameter	Weight (lbs)
<input type="checkbox"/>	3/8"	FGP-BFF-375	1"	2-5/8"	3/8"	3-1/4"	0.7
<input type="checkbox"/>	1/2"	FGP-BFF-500	1-1/8"	2-5/8"	1/2"	3-1/4"	0.7
<input type="checkbox"/>	3/4"	FGP-BFF-750	1-3/8"	2-11/16"	3/4"	3-7/16"	1.3
<input type="checkbox"/>	1"	FGP-BFF-1000	1-5/8"	3"	1"	3-7/16"	1.5
<input type="checkbox"/>	1-1/4"	FGP-BFF-1250	2-1/8"	3-1/2"	1-1/4"	4"	2.6

Omega Flex, Inc. \* 451 Creamery Way\* Exton, PA 19341  
Tel: 610-524-7272 \* Toll Free: 800-671-8622 \* Fax: 610-524-7282  
www.omegaflex.com

**Product**

**Mounting Bracket for Flange Fitting Assembly (optional)**

**Project Information**

Job Name: \_\_\_\_\_ Date Submitted: \_\_\_\_\_

Location: \_\_\_\_\_ Submitted By: \_\_\_\_\_

Engineer: \_\_\_\_\_ Approved By: \_\_\_\_\_

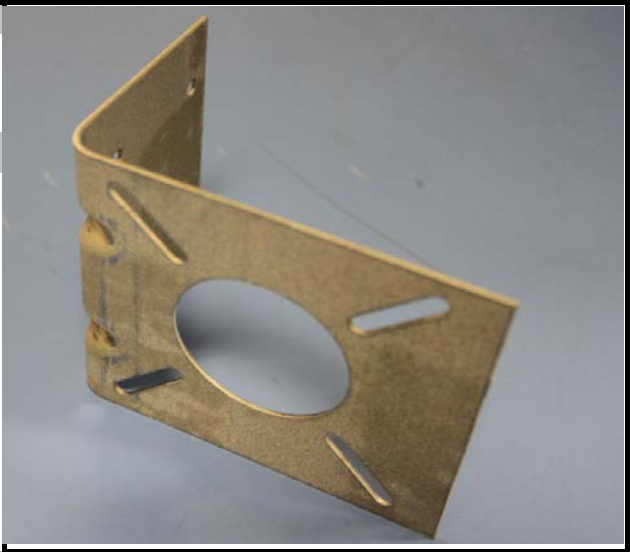
Contractor: \_\_\_\_\_ Manufacturer's Rep: \_\_\_\_\_

**Installation**

Must be installed in accordance with the TracPipe Design Guide and Installation Instructions and all applicable codes

**Application Information**

May be used for rigid mounting of a TracPipe or CounterStrike Flange Fitting. For indoor, outdoor and concealed location applications.



**Technical Data**

Materials

Galvanized Steel

Pressure Ratings (used with tubing)

N/A

Temperature Ratings (used with tubing)

Operating Temperature Range -20 to 200 Deg F

**Codes**

**Standards**

**Listings**

**Dimensional Information**

<input checked="" type="checkbox"/>	Size	P/N	L x W x D	TracPipe or CounterStrike Size	Weight (lbs)
<input type="checkbox"/>	ALL	FGP-TERM BRAC	5" x 5" x 2-3/4"	3/8" thru 1-1/4"	0.3

**Product**

**90° Flange Fitting (Male - NPT) Assembly for TracPipe or CounterStrike**

**Project Information**

Job Name:	Date Submitted:
Location:	Submitted By:
Engineer:	Approved By:
Contractor:	Manufacturer's Rep:

**Installation**

Must be installed in accordance with the TracPipe Design Guide and Installation Instructions and all applicable codes

**Application Information**

Termination fitting for rigid mounting of TracPipe or CounterStrike Tubing and provide a NPT thread. Fitting thread is Male NPT. For use indoor, outdoor, and concealed location applications.

**Technical Data**

Materials

Nut, Adapter, Flange and Split Rings	Yellow Brass
Insert	Stainless Steel

Pressure Ratings (used with tubing)

Specification Operating Pressure	25 PSIG
CSA International Evaluation Report - Max Operating Pressure, 3/8" and 1/2"	125 PSIG

Temperature Ratings (used with tubing)

Operating Temperature Range	-20 to 200 Deg F
-----------------------------	------------------



**Codes**

ICC Codes (IFGC, IRC, IMC, IPC), NFPA 54, UPC, CAN/CSA B149.1, NFPA 58

**Standards**

ANSI LC1 / CSA 6.26 ANSI Z223.1

**Listings**

CSA, ICC PMG 1046 / 1058, IAPMO (UPC) File No. 3682 / ES ER-0227

**Dimensional Information**

✓	Size	P/N	Diameter across flats (Nom. in.)	Length (Nom. in.)	TracPipe or CounterStrike Size	Flange Diameter	Weight (lbs)
<input type="checkbox"/>	3/8"	FGP-ELLB-375	1"	2-11/16"	3/8"	3-1/4"	1.1
<input type="checkbox"/>	1/2"	FGP-ELLB-500	1-1/8"	2-11/16"	1/2"	3-1/4"	1.0

**Product**

**90° Flange Fitting (Valve - Female NPT) Assembly for TracPipe or CounterStrike**

**Project Information**

Job Name:	Date Submitted:
Location:	Submitted By:
Engineer:	Approved By:
Contractor:	Manufacturer's Rep:

**Installation**

Must be installed in accordance with the TracPipe Design Guide and Installation Instructions and all applicable codes

**Application Information**

Termination fitting between TracPipe or CounterStrike tubing and Appliance Shut-off Valve with NPT thread. Fitting thread is Female NPT. For indoor use only.

**Technical Data**

Materials

Nut, Adapter, Flange and Split Rings	Yellow Brass
Insert	Stainless Steel
Valve Body	Plated Brass

Pressure Ratings (used with tubing)

Specification Operating Pressure	1/2 PSIG
Max Test Pressure	60 PSIG

Temperature Ratings (used with tubing)

Operating Temperature Range	32 to 125 Deg F
-----------------------------	-----------------



**Codes**

ICC Codes (IFGC, IRC, IMC, IPC), NFPA 54, UPC, CAN/CSA B149.1, NFPA 58

**Standards**

ANSI LC1 / CSA 6.26, ANSI Z21.15, ANSI Z223.1

**Listings**

CSA, ICC PMG 1046 / 1058, IAPMO (UPC) File No. 3682 / ES ER-0227


**Dimensional Information**

✓	Size	P/N	Diameter across flats (Nom. in.)	Fitting length (Nom. in.)	TracPipe or CounterStrike Size	Flange Diameter	Weight (lbs)
<input type="checkbox"/>	3/8"	FGP-BF90V-375	1"	3-5/8"	3/8"	3-1/4"	1.2
<input type="checkbox"/>	1/2"	FGP-BF90V-500	1-1/8"	3-7/8"	1/2"	3-1/4"	1.20
<input type="checkbox"/>	3/4"	FGP-BF90V-750	1-3/8"	4-3/4"	3/4"	3-7/16"	1.7

Omega Flex, Inc. \* 451 Creamery Way\* Exton, PA 19341

Tel: 610-524-7272 \* Toll Free: 800-671-8622 \* Fax: 610-524-7282

www.omegaflex.com

<b>Product</b>								
<b>Termination Mount (Male - NPT) Assembly for TracPipe and CounterStrike</b>								
<b>Project Information</b>								
Job Name:			Date Submitted:					
Location:			Submitted By:					
Engineer:			Approved By:					
Contractor:			Manufacturer's Rep:					
<b>Installation</b>								
Must be installed in accordance with the TracPipe Design Guide and Installation Instructions and all applicable codes								
<b>Application Information</b>								
Termination fitting between TracPipe or CounterStrike Tubing and NPT thread. Fitting thread is Male NPT. For use indoor, outdoor, and concealed location applications.								
<b>Technical Data</b>								
<u>Materials</u>								
Nut, Adapter, and Split Rings		Yellow Brass						
Insert		Stainless Steel						
Mounting Bracket		Galvanized Steel						
<u>Pressure Ratings (used with tubing)</u>								
Specification Operating Pressure		25 PSIG						
CSA Internatiional Evaluation Report - Max Opreating Pressure, 3/8" through 1"		125 PSIG						
<u>Temperature Ratings (used with tubing)</u>								
Operating Temperature Range		-20 to 200 Deg F						
<b>Codes</b>								
ICC Codes (IFGC, IRC, IMC, IPC), NFPA 54, UPC, CAN/CSA B149.1, NFPA 58								
<b>Standards</b>								
ANSI LC1 / CSA 6.26, ANSI Z21.15, ANSI Z223.1								
<b>Listings</b>								
CSA, ICC PMG 1046 / 1058, IAPMO (UPC) File No. 3682 / ES ER-0227								
<b>Dimensional Information</b>								
✓			<i>Diameter across flats (Nom. in.)</i>	<i>L X W X H</i>	<i>TracPipe or CounterStrike</i>			
	<i>Size</i>	<i>P/N</i>			<i>Size</i>	<i>Weight (lbs)</i>		
<input type="checkbox"/>	3/8"	FGP-TM-375	1"	6-3/8" X 4" X 2-3/8"	3/8"	0.9		
<input type="checkbox"/>	1/2"	FGP-TM-500	1-1/8"	6-3/8" X 4" X 2-7/16"	1/2"	1		
<input type="checkbox"/>	3/4"	FGP-TM-750	1-3/8"	6-3/8" X 4" X 2-1/2"	3/4"	1.1		
<input type="checkbox"/>	3/4"x 1/2"	FGP-TM-750-500	1-3/8"	6-3/8" X 4" X 2-1/2"	3/4"	1.1		
<input type="checkbox"/>	1"	FGP-TM-1000	1-5/8"	6-3/8" X 4" X 2-3/4"	1"	1.3		

Omega Flex, Inc. \* 451 Creamery Way\* Exton, PA 19341

Tel: 610-524-7272 \* Toll Free: 800-671-8622 \* Fax: 610-524-7282

www.omegaflex.com

**Product**

**90° Termination Mount (Male - NPT) Assembly for TracPipe and CounterStrike**

**Project Information**

Job Name:	Date Submitted:
Location:	Submitted By:
Engineer:	Approved By:
Contractor:	Manufacturer's Rep:

**Installation**

Must be installed in accordance with the TracPipe Design Guide and Installation Instructions and all applicable codes

**Application Information**

Termination fitting between TracPipe or CounterStrike Tubing and NPT thread. Fitting thread is Male NPT. For use indoor, outdoor, and concealed location applications.

**Technical Data**

Materials

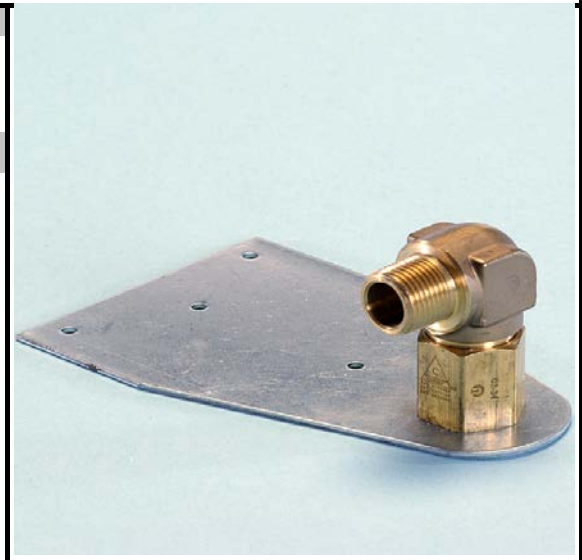
Nut, Adapter, and Split Rings	Yellow Brass
Insert	Stainless Steel
Mounting Bracket	Galvanized Steel

Pressure Ratings (used with tubing)

Specification Operating Pressure	25 PSIG
CSA International Evaluation Report - Max Operating Pressure, 3/8" and 1/2"	125 PSIG

Temperature Ratings (used with tubing)

Operating Temperature Range	-20 to 200 Deg F
-----------------------------	------------------



**Codes**

ICC Codes (IFGC, IRC, IMC, IPC), NFPA 54, UPC, CAN/CSA B149.1, NFPA 58

**Standards**

ANSI LC1 / CSA 6.26, ANSI Z223.1

**Listings**

CSA, ICC PMG 1046 / 1058, IAPMO (UPC) File No. 3682 / ES ER-0227

**Dimensional Information**

✓	Size	P/N	Diameter across flats (Nom. in.)	L X W X H	TracPipe or CounterStrike Size	Weight (lbs)
<input type="checkbox"/>	3/8"	FGP-90TM-375	1"	6-3/8" x 4" x 2-1/2"	3/8"	1.2
<input type="checkbox"/>	1/2"	FGP-90TM-500	1-1/8"	6-3/8" x 4" x 2-9/16"	1/2"	1.2



**Product**

**90° Termination Mount (Valve - Female NPT) Assembly for TracPipe or CounterStrike**

**Project Information**

Job Name:	Date Submitted:
Location:	Submitted By:
Engineer:	Approved By:
Contractor:	Manufacturer's Rep:

**Installation**

Must be installed in accordance with the TracPipe Design Guide and Installation Instructions and all applicable codes

**Application Information**

Termination fitting between TracPipe or CounterStrike Tubing with appliance shut-off valve and NPT thread. Fitting thread is Female NPT. For indoor use only.

**Technical Data**

Materials

Nut, Adapter, and Split Rings	Yellow Brass
Insert	Stainless Steel
Mounting Bracket	Galvanized Steel
Valve Body	Plated Brass

Pressure Ratings (used with tubing)

Specification Operating Pressure	1/2 PSIG
Max Test Pressure	60 PSIG

Temperature Ratings (used with tubing)

Operating Temperature Range	32 to 125 Deg F
-----------------------------	-----------------



**Codes**

ICC Codes (IFGC, IRC, IMC, IPC), NFPA 54, UPC, CAN/CSA B149.1, NFPA 58

**Standards**

ANSI LC1 / CSA 6.26, ANSI Z21.15, ANSI Z223.1

**Listings**

CSA, ICC PMG 1046 / 1058, IAPMO (UPC) File No. 3682 /ES ER-0227

**Dimensional Information**

✓	Size	P/N	Diameter across flats (Nom. in.)	L X W X H	TracPipe or CounterStrike Size	Weight (lbs)
<input type="checkbox"/>	3/8"	FGP-TM90V-375	1"	6-3/8" x 4" x 3-1/2"	3/8"	1.3
<input type="checkbox"/>	1/2"	FGP-TM90V-500	1-1/8"	6-3/8" x 4" x 3-3/4"	1/2"	1.3
<input type="checkbox"/>	3/4"	FGP-TM90V-750	1-3/8"	6-3/8" x 4" x 4-9/16"	3/4"	1.7


<b>Product</b>						
<b>Tee Fitting Tubing by Pipe Outlet for TracPipe and CounterStrike</b>						
<b>Project Information</b>						
Job Name:			Date Submitted:			
Location:			Submitted By:			
Engineer:			Approved By:			
Contractor:			Manufacturer's Rep:			
<b>Installation</b>						
Must be installed in accordance with the TracPipe Design Guide and Installation Instructions and all applicable codes						
<b>Application Information</b>						
Tee fittings for TracPipe and CounterStrike. Tubing Runs by Pipe Branch. Branch Thread is NPT						
<b>Technical Data</b>						
<u>Materials</u>						
Nut, Adapter, and Split Rings		Yellow Brass				
Insert and 1" Split Rings		Stainless Steel				
<u>Pressure Ratings (used with tubing)</u>						
Specification Operating Pressure		25 PSIG				
CSA International Evaluation Report - Max Operating Pressure		125 PSIG				
<u>Temperature Ratings (used with tubing)</u>						
Operating Temperature Range		-20 to 200 Deg F				
<b>Codes</b>						
ICC Codes (IFGC, IRC, IMC, IPC), NFPA 54, UPC, CAN/CSA B149.1, NFPA 58						
<b>Standards</b>						
ANSI LC1 / CSA 6.26, ANSI Z223.1						
<b>Listings</b>						
CSA, ICC PMG 1046 / 1058, IAPMO (UPC) File No. 3682 / ES ER-0227						
<b>Dimensional Information</b>						
✓				<i>Diameter across flats</i>	<i>TracPipe or CounterStrike</i>	
	<i>Size</i>	<i>P/N</i>	<i>NPT</i>	<i>(Nom. in.)</i>	<i>Size</i>	<i>Weight (lbs)</i>
<input type="checkbox"/>	1/2"	FGP-T500-750	3/4" MNPT	1-1/8"	1/2"	1
<input type="checkbox"/>	1/2"	FGP-T500-500	1/2" FNPT	1-1/8"	1/2"	1
<input type="checkbox"/>	3/4"	FGP-T750-500	1/2" FNPT	1-3/8"	3/4"	1.6
<input type="checkbox"/>	3/4"	FGP-T750-750	3/4" FNPT	1-3/8"	3/4"	1.6
<input type="checkbox"/>	1"	FGP-T1000-1000	1" FNPT	1-5/8"	1"	2.2



Omega Flex, Inc. \* 451 Creamery Way\* Exton, PA 19341

Tel: 610-524-7272 \* Toll Free: 800-671-8622 \* Fax: 610-524-7282

www.omegaflex.com

<b>Product</b>						
<b>Tee Fitting Tubing by Tubing for TracPipe and CounterStrike</b>						
<b>Project Information</b>						
Job Name:			Date Submitted:			
Location:			Submitted By:			
Engineer:			Approved By:			
Contractor:			Manufacturer's Rep:			
<b>Installation</b>						
Must be installed in accordance with the TracPipe Design Guide and Installation Instructions and all applicable codes						
<b>Application Information</b>						
						
<b>Technical Data</b>						
<u>Materials</u>						
Nut, Adapter, and Split Rings			Yellow Brass			
Insert and 1" Split Rings			Stainless Steel			
<u>Pressure Ratings (used with tubing)</u>						
Specification Operating Pressure			25 PSIG CSA International			
Evaluation Report - Max Operating Pressure, 3/8" through 1-1/4" 125 PSIG						
<u>Temperature Ratings (used with tubing)</u>						
Operating Temperature Range			-20 to 200 Deg F			
<b>Codes</b>						
ICC Codes (IFGC, IRC, IMC), NFPA 54 / ANSI Z223.1, UPC, CAN/CSA B149.1, NFPA 58						
<b>Standards</b>						
ANSI LC1 / CSA 6.26, ANSI Z223.1						
<b>Listings</b>						
CSA, ICC PMG 1046 / 1052 / 1058, IAPMO (UPC) File No. 3682, / ES ER-02257						
<b>Dimensional Information</b>						
✓			<i>R X R X B Sizes TracPipe or CounterStrike Sizes</i>	<i>Diameter Across Hex Flats X R X B</i>	<i>R (Nom.)</i>	<i>Weight (lbs.)</i>
	<i>Size</i>	<i>P/N</i>		<i>In.)</i>		
<input type="checkbox"/>	1/2"	FGP-TF500-T500	1/2" x 1/2" x 1/2"	1-1/8" x 1-1/8" x 1-1/8"		1.0
<input type="checkbox"/>	3/4"	FGP-TF750-T500	3/4" x 3/4" x 3/4"	1-3/8" x 1-3/8" x 1-3/8"		1.6
<input type="checkbox"/>	1"	FGP-TF1000-T1000	1" x 1" x 1"	1-5/8" x 1-5/8" x 1-5/8"		2.2
<input type="checkbox"/>	1/2"	FGP-RT-501	1/2" x 3/8" x 3/8"	1-1/8" x 1" x 1"		0.9
<input type="checkbox"/>	3/4"	FGP-RT-751	3/4" x 1/2" x 3/8"	1-3/8" x 1-1/8" x 1"		1.1
<input type="checkbox"/>	3/4"	FGP-RT-752	3/4" x 1/2" x 1/2"	1-3/8" x 1-1/8" x 1-1/8"		1.1
<input type="checkbox"/>	1"	FGP-RT-1001	1" x 3/4" x 1/2"	1-5/8" x 1-3/8" x 1-1/8"		1.8
<input type="checkbox"/>	1"	FGP-RT-1002	1" x 3/4" x 3/4"	1-5/8" x 1-3/8" x 1-3/8"		1.8
<input type="checkbox"/>	3/4"	FGP-TF750-T500	3/4" x 3/4" x 1/2"	1-3/8" x 1-3/8" x 1-1/8"		1.6
<input type="checkbox"/>	1"	FGP-TF1000-T750	1" x 1" x 3/4"	1-5/8" x 1-5/8" x 1-3/8"		2.1
<input type="checkbox"/>	1"	FGP-TF1000-T500	1" x 1" x 1/2"	1-5/8" x 1-5/8" x 1-1/8"		2.2
<input type="checkbox"/>	1-1/4"	FGP-TF1250-T1000	1-1/4" x 1-1/4" x 1"	2-1/8" x 2-1/8" x 1-5/8"		2.7
<input type="checkbox"/>	1-1/4"	FGP-TF1250-T750	1-1/4" x 1-1/4" x 3/4"	2-1/8" x 2-1/8" x 1-3/8"		2.6

OmegaFlex, Inc. \* 451 Creamery Way\* Exton, PA 19341

Tel: 610-524-7272 \* Toll Free: 800-671-8622 \* Fax: 610-524-7282

www.omegaflex.com

**Product**

**Tee Fitting Tubing by Tubing for TracPipe and CounterStrike**

**Project Information**

Job Name:	Date Submitted:
Location:	Submitted By:
Engineer:	Approved By:
Contractor:	Manufacturer's Rep:

**Installation**

Must be installed in accordance with the TracPipe Design Guide and Installation Instructions and all applicable codes

✓	Size	P/N	R X R X B Sizes TracPipe or CounterStrike Sizes	Diameter Across Hex Flats X R X B In.)	R (Nom.)	Weight (lbs.)
<input type="checkbox"/>	1-1/4"	FGP-1250-T500	1-1/4" X 1-1/4" X 1/2"	2-1/8" X 2-1/8" X 1-1/8"		2.6
<input type="checkbox"/>	1-1/4"	FGP-RT-1251	1-1/4" X 1" X 1"	2-1/8" X 1-5/8" X 1-5/8"		2.2
<input type="checkbox"/>	1-1/4"	FGP-RT-1252	1-1/4" X 1" X 3/4"	2-1/8" X 1-5/8" X 1-3/8"		2.2
<input type="checkbox"/>	1-1/4"	FGP-RT-1253	1-1/4" X 1" X 1/2"	2-1/8" X 1-5/8" X 1-1/8"		2.1
<input type="checkbox"/>	1-1/2"	FGP-TF1500-T1250	1-1/2" X 1-1/2" X 1-1/4"	2-1/2" X 2-1/2" X 2-1/8"		4.4
<input type="checkbox"/>	1-1/2"	FGP-TF1500-T1000	1-1/2" X 1-1/2" X 1"	2-1/2" X 2-1/2" X 1-5/8"		4.1
<input type="checkbox"/>	1-1/2"	FGP-TF1500-T750	1-1/2" X 1-1/2" X 3/4"	2-1/2" X 2-1/2" X 1-3/8"		4.1
<input type="checkbox"/>	1-1/2"	FGP-TF1500-T500	1-1/2" X 1-1/2" X 1/2"	2-1/2" X 2-1/2" X 1-1/8"		4.0
<input type="checkbox"/>	1-1/2"	FGP-RT-1502	1-1/2" X 1-1/4" X 1-1/4"	2-1/2" X 2-1/8" X 2-1/8"		3.7
<input type="checkbox"/>	1-1/2"	FGP-RT-1502	1-1/2" X 1-1/4" X 1"	2-1/2" X 2-1/8" X 1-5/8"		3.6
<input type="checkbox"/>	1-1/2"	FGP-RT-1503	1-1/2" X 1-1/4" X 3/4"	2-1/2" X 2-1/8" X 1-3/8"		3.6
<input type="checkbox"/>	1-1/2"	FGP-RT-1504	1-1/2" X 1-1/4" X 1/2"	2-1/2" X 2-1/8" X 1-1/8"		3.5
<input type="checkbox"/>	2"	FGP-TF2000-T1500	2" X 2" X 1-1/2"	3-1/4" X 3-1/4" X 2-1/2"		7.4
<input type="checkbox"/>	2"	FGP-TF2000-T1250	2" X 2" X 1-1/4"	3-1/4" X 3-1/4" X 2-1/8"		7.2
<input type="checkbox"/>	2"	FGP-TF2000-T1000	2" X 2" X 1"	3-1/4" X 3-1/4" X 1-5/8"		7.0
<input type="checkbox"/>	2"	FGP-TF2000-T750	2" X 2" X 3/4"	3-1/4" X 3-1/4" X 1-3/8"		7.0
<input type="checkbox"/>	2"	FGP-TF2000-T500	2" X 2" X 1/2"	3-1/4" X 3-1/4" X 1-1/8"		7.0
<input type="checkbox"/>	2"	FGP-RT-2001	2" X 1-1/2" X 1-1/2"	3-1/4" X 2-1/2" X 2-1/2"		6.5
<input type="checkbox"/>	2"	FGP-RT-2002	2" X 1-1/2" X 1-1/4"	3-1/4" X 2-1/2" X 2-1/8"		6.3
<input type="checkbox"/>	2"	FGP-RT-2003	2" X 1-1/2" X 1"	3-1/4" X 2-1/2" X 1-5/8"		6.1
<input type="checkbox"/>	2"	FGP-RT-2004	2" X 1-1/2" X 3/4"	3-1/4" X 2-1/2" X 1-3/8"		6.1
<input type="checkbox"/>	2"	FGP-RT-2005	2" X 1-1/2" X 1/2"	3-1/4" X 2-1/2" X 1-1/8"		6.1

**Product**

**Key Valve Bracket Assembly for TracPipe and CounterStrike**

**Project Information**

Job Name:	Date Submitted:
Location:	Submitted By:
Engineer:	Approved By:
Contractor:	Manufacturer's Rep:

**Installation**

Must be installed in accordance with the TracPipe Design Guide and Installation Instructions and all applicable codes

**Application Information**

Use for but not limited to rigid mount of fireplace key valve for TracPipe and CounterStrike. May be used indoor, outdoor and in concealed locations.



**Technical Data**

Materials

Nut, Adapter, and Split Rings	Yellow Brass
Insert	Stainless Steel
Bracket	Galvanized Steel

Pressure Ratings (used with tubing)

Specification Operating Pressure	25 PSIG
CSA International Evaluation Report - Max Operating Pressure	
3/8" through 3/4"	125 PSIG

Temperature Ratings (used with tubing)

Operating Temperature Range	-20 to 200 Deg F
-----------------------------	------------------

**Codes**

ICC Codes (IFGC, IRC, IMC, IPC), NFPA 54, UPC, CAN/CSA B149.1, NFPA 58

**Standards**


ANSI LC1 / CSA 6.26, ANSI Z223.1

**Listings**

CSA, ICC PMG 1046 / 1058, IAPMO (UPC) File No. 3682 / ES ER-0227

**Dimensional Information**

✓			Diameter	TracPipe or	Weight (lbs)
	Size	P/N	across flats	CounterStrike	
			(Nom. in.)	Size	
<input type="checkbox"/>	3/8"	FGP-KVB-375	1"	3/8"	0.50
<input type="checkbox"/>	1/2"	FGP-KVB-500	1-1/8"	1/2"	0.54
<input type="checkbox"/>	3/4" x 1/2"	FGP-KVB750-500	1-3/8"	3/4"	0.77

<b>Product</b>						
<b>Meter Termination Stub-Out (Male - NPT)</b>						
<b>Project Information</b>						
Job Name:			Date Submitted:			
Location:			Submitted By:			
Engineer:			Approved By:			
Contractor:			Manufacturer's Rep:			
<b>Installation</b>						
Must be installed in accordance with the TracPipe Design Guide and Installation Instructions and all applicable codes						
<b>Application Information</b>						
Schedule 40 B.I.P. Meter Stub-Out						
<b>Technical Data</b>						
<u>Materials</u>						
Schedule 40 Black Iron Pipe						
<u>Pressure Ratings (used with tubing)</u>						
Specification Operating Pressure			25 PSIG			
CSA International Evaluation Report - Max Operating Pressure						
3/8" through 3/4"			125 PSIG			
<u>Temperature Ratings (used with tubing)</u>						
Operating Temperature Range			-20 to 200 Deg F			
<b>Codes</b>						
ICC Codes (IFGC, IRC, IMC, IPC), NFPA 54 , UPC, CAN/CSA B149.1, NFPA 58						
<b>Standards</b>						
<b>Listings</b>						
<b>Dimensional Information</b>						
✓			<i>Mounting Flange Dim (Nom. in.)</i>	<i>Fitting length (Nom. in.)</i>	<i>TracPipe or CounterStrike Size</i>	<i>Weight (lbs)</i>
<input type="checkbox"/>	Size	P/N				
<input type="checkbox"/>	1" x 6"	FGP-1X6 MT	5" x 5"	6"	N/A	1.35
<input type="checkbox"/>	1" x 12"	FGP-1X12 MT	5" x 5"	12"	N/A	1.95

Omega Flex, Inc. \* 451 Creamery Way\* Exton, PA 19341

Tel: 610-524-7272 \* Toll Free: 800-671-8622 \* Fax: 610-524-7282

www.omegaflex.com



**Product**

**Meter Stub Bracket**

**Project Information**

Job Name:	Date Submitted:
Location:	Submitted By:
Engineer:	Approved By:
Contractor:	Manufacturer's Rep:

**Installation**

Must be installed in accordance with the TracPipe Design Guide and Installation Instructions and all applicable codes

**Application Information**

For use with FGP-MT Series Meter Terminations (optional) Fits between standard 16" O.C. framing

**Technical Data**

Materials

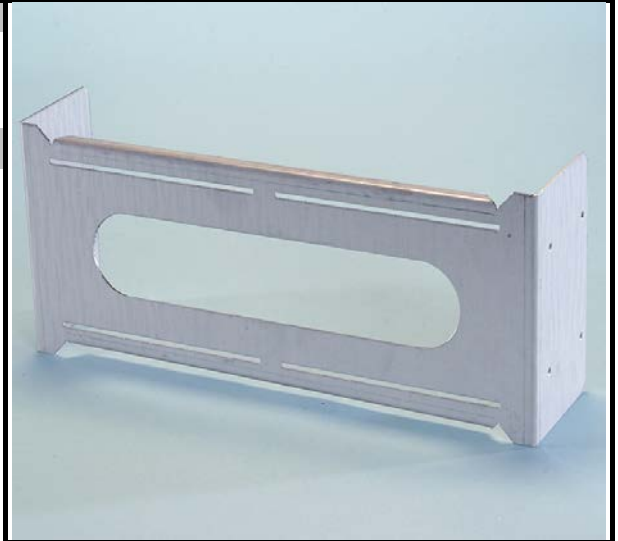
Galvanized Steel

Pressure Ratings (used with tubing)

N/A

Temperature Ratings (used with tubing)

Operating Temperature Range -20 to 200 Deg F



**Codes**

**Standards**

**Listings**

**Dimensional Information**

✓

	Size	P/N	L x H x D	Weight (lbs)
<input type="checkbox"/>	All	FGP-STUD-BRAC	14-1/2" x 6" x 3-3/8"	2.1

**Product**

**Appliance Stub Out for Use with TracPipe and CounterStrike**

**Project Information**

Job Name:	Date Submitted:
Location:	Submitted By:
Engineer:	Approved By:
Contractor:	Manufacturer's Rep:

**Installation**

Must be installed in accordance with the TracPipe Design Guide and Installation Instructions and all applicable codes

**Application Information**

Schedule 40 B.I.P. stub out for use at movable appliance locations, with mounting plate

**Technical Data**

Materials

Schedule 40 B.I.P.  
Mounting Plate 12 Ga. Carbon Steel

Pressure Ratings (used with tubing)

Specification Operating Pressure 25 PSIG  
CSA International Evaluation Report - Max Operating Pressure,  
3/8" through 1-1/4" 125 PSIG

Temperature Ratings (used with tubing)

Operating Temperature Range -20 to 200 Deg F



**Codes**

**Standards**

NPT Thread per ANSI B1.20.1

**Listings**

**Dimensional Information**

<input checked="" type="checkbox"/>	Size	P/N	Mounting Flange Dim (Nom)	Fitting length (Nom. in.)	TracPipe or CounterStrike Size	Weight (lbs)
<input type="checkbox"/>	1/2"	FGP-ASP-500	5" x 5"	2-9/16"	1/2"	0.72

**Product**

**Fireplace Stub-Out (Male - NPT) for Use with TracPipe and CounterStrike**

**Project Information**

Job Name:	Date Submitted:
Location:	Submitted By:
Engineer:	Approved By:
Contractor:	Manufacturer's Rep:

**Installation**

Must be installed in accordance with the TracPipe Design Guide and Installation Instructions and all applicable codes

**Application Information**

Mounting plate with NPT B.I.P. Nipple. Angled to match the fireplace cabinet penetration requirements.



**Technical Data**

Materials

Schedule 40 B.I.P.  
Mounting Plate 12 ga. Carbon Steel

Pressure Ratings (used with tubing)

Specification Operating Pressure	25 PSIG
CSA International Evaluation Report - Max Operating Pressure, 3/8" through 1-1/4"	125 PSIG

Temperature Ratings (used with tubing)

Operating Temperature Range	-20 to 200 Deg F
-----------------------------	------------------

**Codes**

**Standards**

NPT Threads per ANSI B1.20.1

**Listings**

**Dimensional Information**

✓	Size	P/N	Flange Mount Dim (Nom)	Fitting length (Nom. in.)	TracPipe or CounterStrike Size	Weight (lbs)
<input type="checkbox"/>	1/2"	FGP-FPT-500	5" x 5"	5-1/2"	1/2"	0.72

**Product**

**Meter Termination for use with TracPipe and CounterStrike**

**Project Information**

Job Name:	Date Submitted:
Location:	Submitted By:
Engineer:	Approved By:
Contractor:	Manufacturer's Rep:

**Installation**

Must be installed in accordance with the TracPipe Design Guide and Installation Instructions and all applicable codes

**Application Information**

Meter Termination incorporating the AutoFlare fitting.

**Technical Data**

Materials

Nut, Adapter, Flange and Split Rings	Yellow Brass
Insert and 1" split rings	Stainless Steel
Mounting Plate & Pipe	Steel

Pressure Ratings (used with tubing)

Specification Operating Pressure	25 PSIG
CSA International Evaluation Report - Max Operating Pressure, 3/8" through 1-1/4"	125 PSIG

Temperature Ratings (used with tubing)

Operating Temperature Range	-20 to 200 Deg F
-----------------------------	------------------



**Codes**

ICC Codes (IFGC, IRC, IMC, IPC), NFPA 54, UPC, CAN/CSA B149.1, NFPA 58

**Standards**

ANSI LC1 / CSA 6.26, ANSI Z223.1

**Listings**

CSA, ICC PMG 1046 / 1058, IAPMO (UPC) File No. 3682 / ES ER-0227

**Dimensional Information**

✓	Size	P/N	Diameter across flats (Nom. in.)		Fitting length (Nom. in.)	TracPipe or CounterStrike Size	Weight (lbs)
			Nut	Body			
<input type="checkbox"/>	1/2"	FGP-MT6-500	1-5/8"	1-1/8"	6"	1/2"	1.8
<input type="checkbox"/>	3/4"	FGP-MT6-750	1-5/8"	1-3/8"	6"	3/4"	1.8
<input type="checkbox"/>	1"	FGP-MT6-1000	1-5/8"	1-5/8"	6"	1"	1.8
<input type="checkbox"/>	1"	FGP-MT9-1000	1-5/8"	1-5/8"	9"	1"	2.6
<input type="checkbox"/>	1/2"	FGP-MT12-500	1-5/8"	1-1/8"	12"	1/2"	2.6
<input type="checkbox"/>	3/4"	FGP-MT12-750	1-5/8"	1-3/8"	12"	3/4"	2.6
<input type="checkbox"/>	1"	FGP-MT12-1000	1-5/8"	1-5/8"	12"	1"	2.6

Omega Flex, Inc. \* 451 Creamery Way\* Exton, PA 19341

Tel: 610-524-7272 \* Toll Free: 800-671-8622 \* Fax: 610-524-7282

www.omegaflex.com

**Product**

**Meter Termination Bracket for TracPipe and CounterStrike**

**Project Information**

Job Name:	Date Submitted:
Location:	Submitted By:
Engineer:	Approved By:
Contractor:	Manufacturer's Rep:

**Installation**

Must be installed in accordance with the TracPipe Design Guide and Installation Instructions and all applicable codes

**Application Information**

Used with FGP-MT Meter Termination series

**Technical Data**

Materials

Galvanized Steel

Pressure Ratings (used with tubing)

N/A

Temperature Ratings (used with tubing)

Operating Temperature Range -20 to 200 Deg F



**Codes**

**Standards**

**Listings**

**Dimensional Information**

	Size	P/N	L x H x D	TracPipe or CounterStrike Size	Weight (lbs)
<input type="checkbox"/>	All	FGP-MT-BRAC	5" x 5" x 2-3/4"	1/2" THRU 1"	0.8

**Product**

**Metal Wall Box with 90° Valve Assembly for use with TracPipe and CounterStrike**

**Project Information**

Job Name:	Date Submitted:
Location:	Submitted By:
Engineer:	Approved By:
Contractor:	Manufacturer's Rep:

**Installation**

Must be installed in accordance with the TracPipe Design Guide and Installation Instructions and all applicable codes

**Application Information**

Metal wall box with valve for use with zero clearance appliance installations. Reverse Mounting tabs to accommodate double sheetrock walls. For Indoor Use Only. Wall Box is Fire Rated to UL 1479.

**Technical Data**

Materials

Nut, Adapter, Flange and Split Rings	Yellow Brass
Insert	Stainless Steel
Wall Box	Powder Coated Steel

Pressure Ratings (used with tubing)

Specification Operating Pressure	1/2 PSIG
Max Test Pressure	60 PSIG

Temperature Ratings (used with tubing)

Operating Temperature Range	-20 to 200 Deg F
-----------------------------	------------------



**Codes**

ICC Codes (IFGC, IRC, IMC, IPC), NFPA 54, UPC, CAN/CSA B149.1, NFPA 58

**Standards**

ANSI LC1 / CSA 6.26, ANSI Z21.15, ANSI Z223.1, UL 1479

**Listings**

CSA, ICC PMG 1046 / 1058, IAPMO (UPC) File No. 3682 / ES ER-0227

**Dimensional Information**

✓	Size	P/N	Diameter across flats (Nom. in.)		Box Dim L x H x D		Valve Outlet	TracPipe or CounterStrike	
			Nut	Valve Body	Trim Ring Dim	NPT	Size	Weight (lbs)	
<input type="checkbox"/>	3/8"	FGP-WBTM-375	1"	1-1/8"	5" x 5" x 3-1/8"	6-3/4" x 6-3/4"	1/2"	3/8"	2.3
<input type="checkbox"/>	1/2"	FGP-WBTM-500	1-1/8"	1-1/8"	5" x 5" x 3-1/8"	6-3/4" x 6-3/4"	1/2"	1/2"	2.3
<input type="checkbox"/>	3/4"	FGP-WBTM-750	1-3/8"	1-3/8"	5" x 5" x 3-1/8"	6-3/4" x 6-3/4"	3/4"	3/4"	2.8

Omega Flex, Inc. \* 451 Creamery Way\* Exton, PA 19341

Tel: 610-524-7272 \* Toll Free: 800-671-8622 \* Fax: 610-524-7282

www.omegaflex.com



**Product**

**Manifolds for use with TracPipe and CounterStrike**

**Project Information**

Job Name:	Date Submitted:
Location:	Submitted By:
Engineer:	Approved By:
Contractor:	Manufacturer's Rep:

**Installation**

Must be installed in accordance with the TracPipe Design Guide and Installation Instructions and all applicable codes

**Application Information**

Manifolds used to facilitate parallel piping installations. May be used in concealed locations on low pressure systems without Line Pressure regulators.

**Technical Data**

Materials

Cast Iron

Pressure Ratings (used with tubing)

Specification Operating Pressure	25 PSIG
CSA International Evaluation Report - Max Operating Pressure, 3/8" through 1-1/4"	125 PSIG

Temperature Ratings (used with tubing)

Operating Temperature Range	-20 to 200 Deg F
-----------------------------	------------------



**Codes**

ICC Codes (IFGC, IRC, IMC, IPC), NFPA 54, UPC, CAN/CSA B149.1, NFPA 58

**Standards**

ANSI LC1 / CSA 6.26, ANSI Z223.1

**Listings**

CSA, ICC PMG 1046 / 1058, IAPMO (UPC) File No. 3682 / ES ER-0227

**Dimensional Information**

✓	P/N	OD (Nom. in.)	Manifold length (Nom. in.)	Run Sizes	Port Size	Weight (lbs)
<input type="checkbox"/>	FGP-MI-PC	1-1/2"	9-5/8"	1/2", 3/4"	1/2"	1.9
<input type="checkbox"/>	FGP-MI-PC-1X	2"	11-1/2"	1", 1-1/4"	3/4"	5.5
<input type="checkbox"/>	FGP-MI-PC-2X	3-1/8"	14-5/8"	1-1/2", 2"	1"	13

**Product**

**Manifold Bracket**

**Project Information**

Job Name:	Date Submitted:
Location:	Submitted By:
Engineer:	Approved By:
Contractor:	Manufacturer's Rep:

**Installation**

Must be installed in accordance with the TracPipe Design Guide and Installation Instructions and all applicable codes

**Application Information**

For use with FGP-MI-PC manifold only

**Technical Data**

Materials

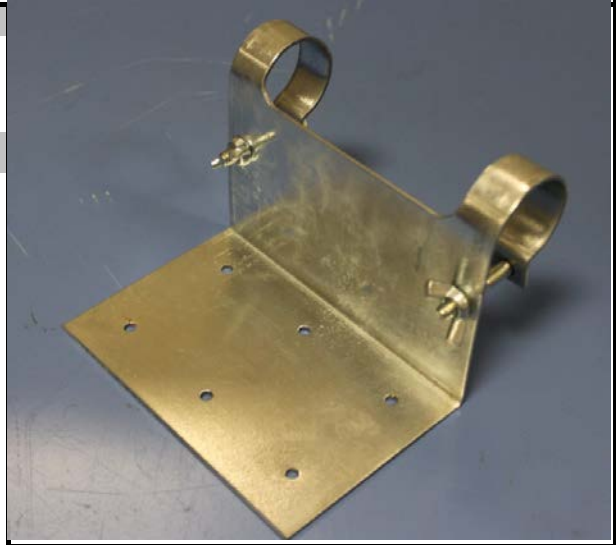
Galvanized Steel

Pressure Ratings (used with tubing)

N/A

Temperature Ratings (used with tubing)

Operating Temperature Range -20 to 200 Deg F



**Codes**

**Standards**

**Listings**

**Dimensional Information**

✓

	P/N	L x H x D	Weight (lbs)
<input type="checkbox"/>	FGP-MB2	5-1/4" x 5-1/4" x 4"	1.3

**Product**

**Stackable Manifold**

**Project Information**

Job Name:	Date Submitted:
Location:	Submitted By:
Engineer:	Approved By:
Contractor:	Manufacturer's Rep:

**Installation**

Must be installed in accordance with the TracPipe Design Guide and Installation Instructions and all applicable codes

**Application Information**

Two port manifolds with pressure test port designed for smaller systems and to facilitate additional outlets to existing manifold installations. Equipped with a 1/4" Pressure test port.

**Technical Data**

Materials

Cast Iron

Pressure Ratings (used with tubing)

Specification Operating Pressure 25 PSIG

CSA International Evaluation Report - Max Operating Pressure, 3/8" through 1-1/4" 125 PSIG

Temperature Ratings (used with tubing)

Operating Temperature Range -20 to 200 Deg F



**Codes**

ICC Codes (IFGC, IRC, IMC, IPC), NFPA 54, UPC, CAN/CSA B149.1, NFPA 58

**Standards**

ANSI LC1 / CSA 6.26, ANSI Z223.1

**Listings**

CSA, ICC PMG 1046 / 1058, IAPMO (UPC) File No. 3682 / ES ER-0227

**Dimensional Information**

✓	Size	P/N	Manifold		Port Size	Run FNPT - MNPT	Weight (lbs)
			OD (Nom In.)	Length (Nom In.)			
<input type="checkbox"/>	1/2"	FGP-MI-ST-500	1-3/8"	6"	1/2"	1/2" - 1/2"	1.4
<input type="checkbox"/>	3/4"	FGP-MI-ST-750	1-3/8"	6"	1/2"	3/4" - 3/4"	1.4

Omega Flex, Inc. \* 451 Creamery Way\* Exton, PA 19341

Tel: 610-524-7272 \* Toll Free: 800-671-8622 \* Fax: 610-524-7282

www.omegaflex.com

**Product**

**Stackable Manifold Bracket**

**Project Information**

Job Name:	Date Submitted:
Location:	Submitted By:
Engineer:	Approved By:
Contractor:	Manufacturer's Rep:

**Installation**

Must be installed in accordance with the TracPipe Design Guide and Installation Instructions and all applicable codes

**Application Information**

Mounting bracket for use with Stackable Manifolds

**Technical Data**

Materials

Galvanized Steel

Pressure Ratings (used with tubing)

N/A

Temperature Ratings (used with tubing)

Operating Temperature Range -20 to 200 Deg F



**Codes**

**Standards**

**Listings**

**Dimensional Information**

✓

	P/N	L x H x W	Weight (lbs)
<input type="checkbox"/>	FGP-MB-ST	4" x 4-1/2" x 1-1/2"	0.4

**Product**

**Load Center w/ Manifold Bracket for use with TracPipe and CounterStrike**

**Project Information**

Job Name:	Date Submitted:
Location:	Submitted By:
Engineer:	Approved By:
Contractor:	Manufacturer's Rep:

**Installation**

Must be installed in accordance with the TracPipe Design Guide and Installation Instructions and all applicable codes

**Application Information**

For use with FGP-MI-PC Manifold and FGP-REG-3 Regulator only. Load center will mount between standard 16" O.C. Studs. Does not include piping or Regulator.



**Technical Data**

Materials

Powder Coated Steel

Pressure Ratings (used with tubing)

N/A

Temperature Ratings (used with tubing)

Operating Temperature Range -20 to 200 Deg F

**Codes**

**Standards**

**Listings**

**Dimensional Information**

✓

	Size	P/N	L x W x D	Weight (lbs)
<input type="checkbox"/>		FGP-LC	25-1/4" x 15-3/4" x 4-1/4"	11.3

**Product**

**Bonding Clamps**

**Project Information**

Job Name:	Date Submitted:
Location:	Submitted By:
Engineer:	Approved By:
Contractor:	Manufacturer's Rep:

**Installation**

Must be installed in accordance with the TracPipe Design Guide and Installation Instructions and all applicable codes

**Application Information**

UL 467 Tested Bonding Clamp for use on Pipe and Brass Fitting Hex Flats.

**Technical Data**

Materials

Body	Brass
Screw	Stainless Steel

Pressure Ratings (used with tubing)

N/A

Temperature Ratings (used with tubing)

Operating Temperature Range -20 to 200 Deg F



**Codes**

NFPA 780

**Standards**

UL 467/CSA C22.2

**Listings**

UL

**Dimensional Information**

✓	P/N	TracPipe or CounterStrike Size	Weight (lbs)
<input type="checkbox"/>	FGP-GC-1	3/8", 1/2", 3/4"	0.2
<input type="checkbox"/>	FGP-GC-2	1", 1-1/4"	0.4
<input type="checkbox"/>	FGP-GC-3	1-1/2", 2"	1.0

**Product**

**PS-II Adapter Assembly (Male NPT)**

**Project Information**

Job Name:	Date Submitted:
Location:	Submitted By:
Engineer:	Approved By:
Contractor:	Manufacturer's Rep:

**Installation**

Must be installed in accordance with the TracPipe Design Guide and Installation Instructions and all applicable codes

**Application Information**

Connection of PS-II to NPT fitting.

**Technical Data**

Materials

Nut, Adapter, Flange and Split Rings	Yellow Brass
Insert and 1" Split Ring	Stainless Steel

Pressure Ratings (used with tubing)

Specification Operating Pressure	25 PSIG
Max Test Pressure	40 PSIG

Temperature Ratings (used with tubing)

Operating Temperature Range	-20 to 200 Deg F
-----------------------------	------------------



**Codes**

ICC Codes (IFGC, IRC, IMC, IPC), NFPA 54 , UPC, CAN/CSA B149.1, NFPA 58

**Standards**

ANSI LC1 / CSA 6.26, ANSI Z223.1

**Listings**

CSA, ICC PMG 1046 / 1052, IAPMO (UPC) File No. 4665

**Dimensional Information**

✓	Size	P/N	Diameter across flats (Nom. in.)	Fitting length (Nom. in.)	TracPipe or CounterStrike Size	Weight (lbs)
<input type="checkbox"/>	3/8"	FGP-UGF-375	1"	3-3/4"	3/8"	0.45
<input type="checkbox"/>	1/2"	FGP-UGF-500	1-1/8"	3-7/8"	1/2"	0.50
<input type="checkbox"/>	3/4"	FGP-UGF-750	1-3/8"	4-1/8"	3/4"	0.65
<input type="checkbox"/>	1"	FGP-UGF-1000	1-5/8"	4-3/4"	1"	0.90
<input type="checkbox"/>	1-1/4"	FGP-UGF-1250	2-5/8"	5-1/4"	1-1/4"	1.60
<input type="checkbox"/>	1-1/2"	FGP-UGF-1500	3"	5-7/8"	1-1/2"	2.65
<input type="checkbox"/>	2"	FGP-UGF-2000	3-1/16"	6-1/2"	2"	4.30

Omega Flex, Inc. \* 451 Creamery Way\* Exton, PA 19341

Tel: 610-524-7272 \* Toll Free: 800-671-8622 \* Fax: 610-524-7282

www.omegaflex.com



**Product**

**PS-II Coupling Assembly**

**Project Information**

Job Name:	Date Submitted:
Location:	Submitted By:
Engineer:	Approved By:
Contractor:	Manufacturer's Rep:

**Installation**

Must be installed in accordance with the TracPipe Design Guide and Installation Instructions and all applicable codes

**Application Information**

Connection of identical sizes of PS-II.

**Technical Data**

Materials

Nut, Adapter, Flange and Split Rings	Yellow Brass
Insert and 1" Split Ring	Stainless Steel

Pressure Ratings (used with tubing)

Specification Operating Pressure	25 PSIG
Max Test Pressure	40 PSIG

Temperature Ratings (used with tubing)

Operating Temperature Range	-20 to 200 Deg F
-----------------------------	------------------



**Codes**

ICC Codes (IFGC, IRC, IMC, IPC), NFPA 54, UPC, CAN/CSA B149.1, NFPA 58

**Standards**

ANSI LC1 / CSA 6.26, ANSI Z223.1

**Listings**

CSA, ICC PMG 1046 / 1052, IAPMO (UPC) File No. 4665

**Dimensional Information**

✓	Size	P/N	Diameter across flats (Nom. in.)	Fitting length (Nom. in.)	TracPipe or CounterStrike Size	Weight (lbs)
<input type="checkbox"/>	3/8"	FGP-UGC-375	1"	6"	3/8"	0.65
<input type="checkbox"/>	1/2"	FGP-UGC-500	1-1/8"	6-1/4"	1/2"	0.70
<input type="checkbox"/>	3/4"	FGP-UGC-750	1-3/8"	7-1/8"	3/4"	1.05
<input type="checkbox"/>	1"	FGP-UGC-1000	1-5/8"	7-5/8"	1"	1.40
<input type="checkbox"/>	1-1/4"	FGP-UGC-1250	2-5/8"	8-3/8"	1-1/4"	2.50
<input type="checkbox"/>	1-1/2"	FGP-UGC-1500	3"	10-1/8"	1-1/2"	4.25
<input type="checkbox"/>	2"	FGP-UGC-2000	3-1/16"	10-5/8"	2"	6.90

**Product**

**Striker Plates**

**Project Information**

Job Name:	Date Submitted:
Location:	Submitted By:
Engineer:	Approved By:
Contractor:	Manufacturer's Rep:

**Installation**

Must be installed in accordance with the TracPipe Design Guide and Installation Instructions and all applicable codes

**Application Information**

Protection from Potential Puncture

**Technical Data**

Materials

Hardened Steel RB >75

Pressure Ratings (used with tubing)

N/A

Temperature Ratings (used with tubing)

Operating Temperature Range N/A



**Codes**

ICC Codes (IFGC, IRC, IMC, IPC), NFPA 54 , UPC, CAN/CSA B149.1, NFPA 58, UPC

**Standards**

ANSI LC1 / CSA 6.26, ANSI Z223.1

**Listings**

CSA, ICC PMG 1046 / 1052/ 1058 IAPMO (UPC) File No.3682 / 4665 / ES ER-0227

**Dimensional Information**

✓

	P/N	L x W	Weight (lbs)
<input type="checkbox"/>	FGP-SP-025	1-1/2" x 3"	0.1
<input type="checkbox"/>	FGP-SP-050	6-1/2" x 3"	0.3
<input type="checkbox"/>	FGP-SP-075	8" x 3"	0.4
<input type="checkbox"/>	FGP-SP-100	11-1/2" x 3"	0.6
<input type="checkbox"/>	FGP-SP-617	17" x 6-1/2"	1.8

**Product**

**Ball Valve - Full Flow**

**Project Information**

Job Name:	Date Submitted:
Location:	Submitted By:
Engineer:	Approved By:
Contractor:	Manufacturer's Rep:

**Installation**

Must be installed in accordance with the TracPipe Design Guide and Installation Instructions and all applicable codes

**Application Information**

Ball valve for installation upstream of the Line Pressure Regulator in elevated pressure systems. May be used for appliance shu-off valave

**Technical Data**

Materials

Yellow Brass

Pressure Ratings (used with tubing)

Specification Operating Pressure	25 PSIG
Max Test Pressure	100 PSIG

Temperature Ratings (used with tubing)

Operating Temperature Range	-20 to 200 Deg F
-----------------------------	------------------



**Codes**

ICC Codes (IFGC, IRC, IMC, IPC), NFPA 54 /, UPC, CAN/CSA B149.1, NFPA 58, UPC

**Standards**

ANSI LC1 / CSA 6.26, ANSI Z22.15, ANSI Z223.1, ASME B16.33 or ASME B16.44

**Listings**

CSA, ICC PMG 1046 / 1052, 1058 IAPMO (UPC) File No.3682 / 4665 / ES ER-0227

**Dimensional Information**

✓	Size	P/N	Valve length (Nom. in.)	Weight (lbs)
<input type="checkbox"/>	1/2"	FGP-WBV-500	2-1/4"	0.5
<input type="checkbox"/>	3/4"	FGP-WBV-750	2-3/4"	0.8

OmegaFlex, Inc. \* 451 Creamery Way\* Exton, PA 19341

Tel: 610-524-7272 \* Toll Free: 800-671-8622 \* Fax: 610-524-7282

www.omegaflex.com

**Product**

**Quick Disconnect with Appliance Shut-Off Valve**

**Project Information**

Job Name:	Date Submitted:
Location:	Submitted By:
Engineer:	Approved By:
Contractor:	Manufacturer's Rep:

**Installation**

Must be installed in accordance with the TracPipe Design Guide and Installation Instructions and all applicable codes

**Application Information**

For use at but not limited to outdoor BBQ and Patio Heater Locations. Indoor and outdoor use

**Technical Data**

Materials

Yellow Brass

Pressure Ratings (used with tubing)

Specification Operating Pressure	1/2 psig
Max Test Pressure	40 PSIG

Temperature Ratings (used with tubing)

Operating Temperature Range	-20 to 200 Deg F
-----------------------------	------------------



**Codes**

ICC Codes (IFGC, IRC, IMC, IPC), NFPA 54, UPC, CAN/CSA B149.1, NFPA 58, UPC

**Standards**

ANSI Z21.41/CSA-6.9 or ANSI Z21.90/CSA-6.24, ANSI Z223.1

**Listings**

CSA, ICC PMG 1046 / 1052 / 1058 IAPMO (UPC) File No. 3682 / 4665 / ES ER-0227

**Dimensional Information**

	Size	P/N	Valve length (Nom. in.)	Weight (lbs)
<input checked="" type="checkbox"/>	1/2"	FGP-QDS	4-1/4"	0.9

**Product**

**90 deg. Appliance Stub Out for Use with TracPipe and CounterStrike**

**Project Information**

Job Name:	Date Submitted:
Location:	Submitted By:
Engineer:	Approved By:
Contractor:	Manufacturer's Rep:

**Installation**

Must be installed in accordance with the TracPipe Design Guide and Installation Instructions and all applicable codes

**Application Information**

Schedule 40 B.I.P. 90 deg. stub out for use at movable appliance locations, with mounting plate

**Technical Data**

Materials

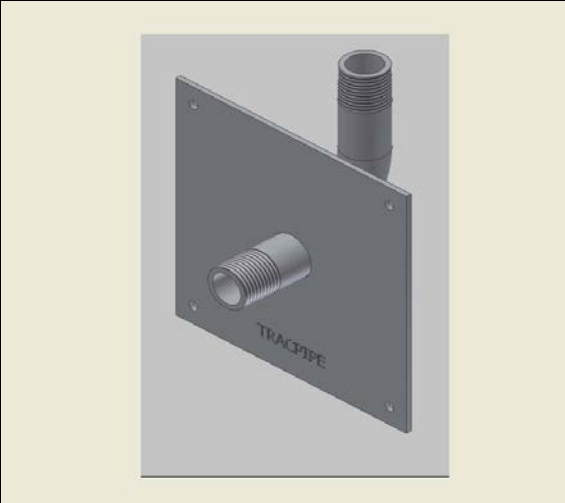
Schedule 40 B.I.P.  
Mounting Plate 12 Ga. Carbon Steel

Pressure Ratings (used with tubing)

Specification Operating Pressure	25 PSIG
CSA International Evaluation Report - Max Operating Pressure, 3/8" through 1-1/4"	125 PSIG

Temperature Ratings (used with tubing)

Operating Temperature Range	-20 to 200 Deg F
-----------------------------	------------------



**Codes**

**Standards**

NPT Thread per ANSI B1.20.1

**Listings**

**Dimensional Information**

✓	Size	P/N	Mounting Flange Dim (Nom)	Fitting length (Nom. in.)	TracPipe or CounterStrike Size	Weight (lbs)
<input type="checkbox"/>	1/2"	FGP-ASP90S-500	5" x 5"	1-1/2"	1/2"	0.95
<input type="checkbox"/>	3/4"	FGP-ASP90S-750	5" x 5"	1-1/2"	3/4"	1.25

<b>Product</b>							
<b>AutoSnap® Straight Fitting (Male-NPT) Assembly for TracPipe and CounterStrike</b>							
<b>Project Information</b>							
Job Name:				Date Submitted:			
Location:				Submitted By:			
Engineer:				Approved By:			
Contractor:				Manufacturer's Rep:			
<b>Installation</b>							
Must be installed in accordance with the TracPipe Design Guide and Installation Instructions and all applicable codes							
<b>Application Information</b>							
Transition fitting between TracPipe or CounterStrike Tubing and NPT thread. Fitting thread is Male NPT. For use indoor, outdoor, and concealed location applications.							
<b>Technical Data</b>							
<u>Materials</u>							
Nut, Adapter, and Snap Ring		Yellow Brass					
<u>Pressure Ratings (used with tubing)</u>							
Specification Operating Pressure		25 PSIG					
CSA International Evaluation Report - Max Operating Pressure, 3/8" through 1-1/4"		125 PSIG					
<u>Temperature Ratings (used with tubing)</u>							
Operating Temperature Range		-20 to 200 Deg F					
<b>Codes</b>							
ICC Codes (IFGC, IRC, IMC, IPC), NFPA 54 , UPC, CAN/CSA B149.1, NFPA 58							
<b>Standards</b>							
ANSI LC1 / CSA 6.26. ANSI Z223.1							
<b>Listings</b>							
CSA, ICC PMG 1046 / 1058,							
<b>Dimensional Information</b>							
✓			<i>Diameter</i>	<i>Fitting</i>	<i>TracPipe or</i>		
	<i>Size</i>	<i>P/N</i>	<i>across flats</i>	<i>length</i>	<i>CounterStrike</i>	<i>Male NPT</i>	
			<i>(Nom. in.)</i>	<i>(Nom. in.)</i>	<i>Size</i>	<i>Pipe size</i>	<i>Weight (lbs)</i>
<input type="checkbox"/>	3/8"	FGP-SFST-375N	15/16"	2-1/8"	3/8"	3/8"	0.2
<input type="checkbox"/>	3/8"x1/2"	FGP-SFST-375	15/16"	2-1/8"	3/8"	1/2"	0.2
<input type="checkbox"/>	1/2"	FGP-SFST-500	1-1/8"	2-1/8"	1/2"	1/2"	0.3
<input type="checkbox"/>	1/2"x3/4"	FGP-SRST500-750	1-1/8"	2"	1/2"	3/4"	0.4
<input type="checkbox"/>	3/4"	FGP-SFST-750	1-3/8"	2-1/4"	3/4"	3/4"	0.4
<input type="checkbox"/>	3/4"x1/2"	FGP-SRST750-500	1-3/8"	2"	3/4"	1/2"	0.5
<input type="checkbox"/>	1"	FGP-SFST-1000	1-3/4"	2-1/2"	1"	1"	0.7
<input type="checkbox"/>	1"x3/4"	FGP-SRST1000-750	1-3/4"	2-1/8"	1"	3/4"	0.8
<input type="checkbox"/>	1-1/4"	FGP-SFST-1250	2"	2-3/4"	1-1/4"	1-1/4"	0.9
<input type="checkbox"/>	1-1/2"	FGP-SFST-1500	2-3/8"	3-1/4"	1-1/2"	1-1/2"	1.3
<input type="checkbox"/>	2"	FGP-SFST-2000	2-7/8"	3-1/2"	2"	2"	2.15



Omega Flex, Inc. \* 451 Creamery Way\* Exton, PA 19341

Tel: 610-524-7272 \* Toll Free: 800-671-8622 \* Fax: 610-524-7282

www.omegaflex.com

**Product**

**AutoSnap® Straight Fitting (Female-NPT) Assembly for TracPipe® and TracPipe® CounterStrike®**

**Project Information**

Job Name:	Date Submitted:
Location:	Submitted By:
Engineer:	Approved By:
Contractor:	Manufacturer's Rep:

**Installation**

Must be installed in accordance with the TracPipe Design Guide and Installation Instructions and all applicable codes

**Application Information**

Transition fitting between TracPipe or CounterStrike Tubing and NPT thread. Fitting thread is Female NPT. For use indoors, outdoors, and concealed location applications.

**Technical Data**

Materials

Nut, Adapter, Flange and Snap Ring      Yellow Brass

Pressure Ratings (used with tubing)

Specification Operating Pressure      25 PSIG  
 CSA International Evaluation Report - Max Operating Pressure  
 3/8" through 1-1/4"      125 PSIG

Temperature Ratings (used with tubing)

Operating Temperature Range      -20 to 200 Deg F



**Codes**

ICC Codes (IFGC, IRC, IMC), NFPA 54 / ANSI Z223.1, UPC, CAN/CSA B149.1, NFPA 58, UPC

**Standards**

ANSI LC1 / CSA 6.26, ANSI Z223.1

**Listings**

CSA, ICC PMG 1046 / 1052, IAPMO (UPC) File No. 4665

**Dimensional Information**

✓	Size	P/N	Diameter across flats (Nom. in.)	Fitting length (Nom. in.)	TracPipe or CounterStrike Size	Weight (lbs/ft)
<input type="checkbox"/>	3/8" x 1/2"	FGP-SFSTF-375	7/8"		3/8"	0.25
<input type="checkbox"/>	1/2"	FGP-SFSTF-500	1"		1/2"	0.29
<input type="checkbox"/>	3/4"	FGP-SFSTF-750	1-1/4"		3/4"	0.43
<input type="checkbox"/>	1"	FGP-FSTF-1000	1-3/4"		1"	0.78

OmegaFlex, Inc. \* 451 Creamery Way\* Exton, PA 19341

Tel: 610-524-7272 \* Toll Free: 800-671-8622 \* Fax: 610-524-7282

www.omegaflex.com



**Product**

**AutoSnap® Coupling Assembly for TracPipe and CounterStrike**

**Project Information**

Job Name:	Date Submitted:
Location:	Submitted By:
Engineer:	Approved By:
Contractor:	Manufacturer's Rep:

**Installation**

Must be installed in accordance with the TracPipe Design Guide and Installation Instructions and all applicable codes

**Application Information**

Coupling fitting for use between like sizes of TracPipe or CounterStrike Tubing. For indoor, outdoor, and concealed location applications.



**Technical Data**

Materials

Nut, Adapter, and Snap Ring                      Yellow Brass

Pressure Ratings (used with tubing)

Specification Operating Pressure                      25 PSIG  
 CSA International Evaluation Report - Max Operating Pressure,  
 3/8" through 1-1/4"                                      125 PSIG

Temperature Ratings (used with tubing)

Operating Temperature Range                      -20 to 200 Deg F

**Codes**

ICC Codes (IFGC, IRC, IMC, IPC), NFPA 54, UPC, CAN/CSA B149.1, NFPA 58

**Standards**

ANSI LC1 / CSA 6.26, ANSI Z223.1

**Listings**

CSA

**Dimensional Information**

✓	Size	P/N	Diameter across flats (Nom. in.)	Fitting length (Nom. in.)	TracPipe or CounterStrike Size	Weight (lbs)
<input type="checkbox"/>	3/8"	FGP-SCPLG-375	15/16"	2-3/8"	3/8" X 3/8"	0.3
<input type="checkbox"/>	1/2"	FGP-SCPLG-500	1-1/8"	2-3/4"	1/2" X 1/2"	0.5
<input type="checkbox"/>	3/4"	FGP-SCPLG-750	1-3/8"	2-7/8"	3/4" X 3/4"	0.7
<input type="checkbox"/>	1"	FGP-SCPLG-1000	1-3/4"	3-1/8"	1" X 1"	0.9
<input type="checkbox"/>	1-1/4"	FGP-SCPLG-1250	2"	3-1/2"	1-1/4" X 1-1/4"	2.0
<input type="checkbox"/>	1-1/2"	FGP-SCPLG-1500	2-3/8"	4"	1-1/2" X 1-1/2"	3.3
<input type="checkbox"/>	2"	FGP-SCPLG-2000	2-7/8"	4-5/8"	2" X 2"	5.5

**Product**

**AutoSnap® Steel Flange Mount for TracPipe and CounterStrike**

**Project Information**

Job Name:	Date Submitted:
Location:	Submitted By:
Engineer:	Approved By:
Contractor:	Manufacturer's Rep:

**Installation**

Must be installed in accordance with the TracPipe Design Guide and Installation Instructions and all applicable codes

**Mounting**

Termination fitting between TracPipe or CounterStrike Tubing and NPT thread. Fitting thread is Male NPT. For use indoor, outdoor, and concealed location applications.



**Technical Data**

Materials

Nut, Adapter, and Snap Ring	Yellow Brass
Mounting Flange	Steel

Pressure Ratings (used with tubing)

Specification Operating Pressure	25 PSIG
CSA International Evaluation Report - Max Operating Pressure, 3/8" through 1-1/4"	125 PSIG

Temperature Ratings (used with tubing)

Operating Temperature Range	-20 to 200 Deg F
-----------------------------	------------------

**Codes**

ICC Codes (IFGC, IRC, IMC, IPC), NFPA 54, UPC, CAN/CSA B149.1, NFPA 58

**Standards**

ANSI LC1 / CSA 6.26, ANSI Z223.1

**Listings**

CSA

**Dimensional Information**

✓	Size	P/N	Diameter across flats (Nom. in.)	Fitting length (Nom. in.)	TracPipe or CounterStrike Size	Weight (lbs)
<input type="checkbox"/>	3/8"	FGP-SRFG-375	15/16"	2-3/8"	3/8" X 3/8"	0.3
<input type="checkbox"/>	1/2"	FGP-SRFG-500	1-1/8"	2-3/4"	1/2" X 1/2"	0.5
<input type="checkbox"/>	3/4"	FGP-SRFG-750	1-3/8"	2-7/8"	3/4" X 3/4"	0.7
<input type="checkbox"/>	1"	FGP-SRFG-1000	1-3/4"	3-1/8"	1" X 1"	0.9
<input type="checkbox"/>	1-1/4"	FGP-SRFG-1250	2"	3-1/2"	1-1/4" X 1-1/4"	2.0

**Product**

**Metal Wall Box with 90° AutoSnap® Valve Assembly for use with TracPipe and CounterStrike**

**Project Information**

Job Name:	Date Submitted:
Location:	Submitted By:
Engineer:	Approved By:
Contractor:	Manufacturer's Rep:

**Installation**

Must be installed in accordance with the TracPipe Design Guide and Installation Instructions and all applicable codes

**Application Information**

Metal wall box with valve for use with zero clearance appliance installations. Reverse Mounting tabs to accommodate double sheetrock walls. For Indoor Use Only. Wall Box is Fire Rated to UL 1479.

**Technical Data**

Materials

Nut, Adapter and Snap Ring	Yellow Brass
Wall Box	Powder Coated Steel

Pressure Ratings (used with tubing)

Specification Operating Pressure	1/2 PSIG
Max Test Pressure	60 PSIG

Temperature Ratings (used with tubing)

Operating Temperature Range	-20 to 200 Deg F
-----------------------------	------------------



**Codes**

ICC Codes (IFGC, IRC, IMC, IPC), NFPA 54, UPC, CAN/CSA B149.1, NFPA 58

**Standards**

ANSI LC1 / CSA 6.26, ANSI Z21.15, ANSI Z223.1, UL 1479

**Listings**

CSA, ICC PMG 1046 / 1058

**Dimensional Information**

✓	Size	P/N	Diameter across flats (Nom. in.)		Box Dim L x H x D		Valve Outlet	TracPipe or CounterStrike	
			Nut	Valve Body	Trim Ring Dim	NPT	Size	Weight (lbs)	
<input type="checkbox"/>	1/2"	FGP-SWBTM-500	1-1/8"	1-1/8"	5" x 5" x 3-1/8"	6-3/4" x 6-3/4"	1/2"	1/2"	2.3
<input type="checkbox"/>	3/4"	FGP-SWBTM-750	1-3/8"	1-3/8"	5" x 5" x 3-1/8"	6-3/4" x 6-3/4"	3/4"	3/4"	2.8

Omega Flex, Inc. \* 451 Creamery Way\* Exton, PA 19341

Tel: 610-524-7272 \* Toll Free: 800-671-8622 \* Fax: 610-524-7282

www.omegaflex.com

**Product**

**AutoSnap Tee Fitting Tubing by Pipe Outlet for TracPipe and CounterStrike**

**Project Information**

Job Name:	Date Submitted:
Location:	Submitted By:
Engineer:	Approved By:
Contractor:	Manufacturer's Rep:

**Installation**

Must be installed in accordance with the TracPipe Design Guide and Installation Instructions and all applicable codes

**Application Information**

AutoSnap Tee fittings for TracPipe and CounterStrike. Tubing Runs by Pipe Branch. Branch Thread is NPT

**Technical Data**

Materials

Nut, Adapter, and Snap Ring                      Yellow Brass

Pressure Ratings (used with tubing)

Specification Operating Pressure                      25 PSIG  
 CSA International Evaluation Report - Max Operating Pressure                      125 PSIG

Temperature Ratings (used with tubing)

Operating Temperature Range                      -20 to 200 Deg F



**Codes**

ICC Codes (IFGC, IRC, IMC, IPC), NFPA 54, UPC, CAN/CSA B149.1, NFPA 58

**Standards**

ANSI LC1 / CSA 6.26, ANSI Z223.1

**Listings**

CSA, ICC PMG 1046 / 1058, IAPMO (UPC) File No. 3682 / ES ER-0227

**Dimensional Information**

✓	Size	P/N	NPT	Diameter across flats (Nom. in.)	TracPipe or CounterStrike Size	Weight (lbs)
<input type="checkbox"/>	1/2"	FGP-ST500-750	3/4" M-NPT	1-1/8"	1/2"	0.9
<input type="checkbox"/>	1/2"	FGP-ST500-500	1/2" F-NPT	1-1/8"	1/2"	0.8
<input type="checkbox"/>	3/4"	FGP-ST750-500	1/2" F-NPT	1-3/8"	3/4"	1.1
<input type="checkbox"/>	3/4"	FGP-ST750-750	3/4" F-NPT	1-3/8"	3/4"	1.0
<input type="checkbox"/>	1"	FGP-ST1000-1000	1" F-NPT	1-3/4"	1"	2.0

**Product**

**AutoSnap Tee Fitting Tubing by Tubing for TracPipe and CounterStrike**

**Project Information**

Job Name:	Date Submitted:
Location:	Submitted By:
Engineer:	Approved By:
Contractor:	Manufacturer's Rep:

**Installation**

Must be installed in accordance with the TracPipe Design Guide and Installation Instructions and all applicable codes

**Application Information**

AutoSnap Tee fittings for TracPipe and CounterStrike. Tubing by Tubing Runs. Branch is Tubing.



**Technical Data**

Materials

Nut, Adapter, and Snap Ring                      Yellow Brass

Pressure Ratings (used with tubing)

Specification Operating Pressure                      25 PSIG  
 CSA International Evaluation Report - Max Operating Pressure                      125 PSIG

Temperature Ratings (used with tubing)

Operating Temperature Range                      -20 to 200 Deg F

**Codes**

ICC Codes (IFGC, IRC, IMC, IPC), NFPA 54, UPC, CAN/CSA B149.1, NFPA 58

**Standards**

ANSI LC1 / CSA 6.26, ANSI Z223.1

**Listings**

CSA, ICC PMG 1046 / 1058, IAPMO (UPC) File No. 3682 / ES ER-0227

**Dimensional Information**

✓	Size	P/N	R X R X B Sizes TracPipe or CounterStrike Sizes	Diameter across Hex flats R X R X B (Nom. in.)	Weight (lbs)
<input type="checkbox"/>	1/2"	FGP-STF500-T500	1/2" X 1/2" x 1/2"	1-1/8" x 1-1/8" x 1-1/8"	0.9
<input type="checkbox"/>	3/4"	FGP-STF750-T500	3/4" X 3/4" x 3/4"	1-3/8" x 1-3/8" x 1-3/8"	1.1
<input type="checkbox"/>	1"	FGP-STF1000-T1000	1" X 1" x 1"	1-3/4" x 1-3/4" x 1-3/4"	2.2
<input type="checkbox"/>	1/2"	FGP-SRT-501	1/2" X 3/8" X 3/8"	1-1/8" x 15/16" x 15/16"	0.8
<input type="checkbox"/>	3/4"	FGP-SRT-751	3/4" X 1/2" X 3/8"	1-3/8" x 1-1/8" x 15/16"	1.0
<input type="checkbox"/>	3/4"	FGP-SRT-752	3/4" X 1/2" X 1/2"	1-3/8" x 1-1/8" x 1-1/8"	1.0
<input type="checkbox"/>	1"	FGP-SRT-1001	1" X 3/4" X 1/2"	1-3/4" x 1-3/8" x 1-1/8"	2.0
<input type="checkbox"/>	1"	FGP-SRT-1002	1" X 3/4" X 3/4"	1-3/4" x 1-3/8" x 1-3/8"	2.0
<input type="checkbox"/>	3/4"	FGP-STF750-T500	3/4" X 3/4" X 1/2"	1-3/8" x 1-3/8" x 1-1/8"	1.1
<input type="checkbox"/>	1"	FGP-STF1000-T750	1" X 1" X 3/4"	1-3/4" x 1-3/4" x 1-3/8"	2.1
<input type="checkbox"/>	1"	FGP-STF1000-T500	1" X 1" X 1/2"	1-3/4" x 1-3/4" x 1-1/8"	2.1

Omega Flex, Inc. \* 451 Creamery Way\* Exton, PA 19341  
 Tel: 610-524-7272 \* Toll Free: 800-671-8622 \* Fax: 610-524-7282  
 www.omegaflex.com

**Product**

**Self Bonding Silicone Tape - Black**

**Project Information**

Job Name:	Date Submitted:
Location:	Submitted By:
Engineer:	Approved By:
Contractor:	Manufacturer's Rep:

**Installation**

Must be installed in accordance with the TracPipe Design Guide and Installation Instructions and all applicable codes

**Application Information**

Apply tape in accordance with section 4.3.2 of the TracPipe Design and Installation Guide

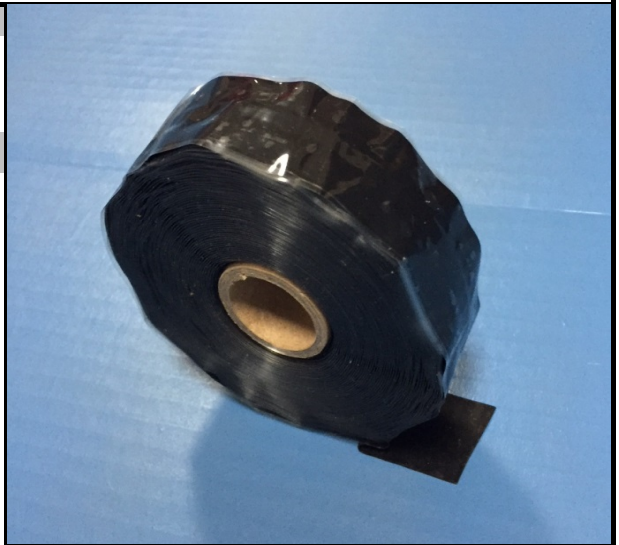
**Technical Data**

Materials

Silicone Rubber - No adhesives permitted

Temperature Ratings

Operating Temperature Range                      -65 to 260 Deg F



**Codes**

**Standards**

**Listings**

**Dimensional Information**

✓	Pipe / Fitting Size	P/N	Width	Roll Length	tape thickness (in.)
	All	FGP-915-10H-12BL	1 inch	12 yds	0.020

**Product**

**AutoFlare® Steel Flange Mount for TracPipe and CounterStrike**

**Project Information**

Job Name:	Date Submitted:
Location:	Submitted By:
Engineer:	Approved By:
Contractor:	Manufacturer's Rep:

**Installation**

Must be installed in accordance with the TracPipe Design Guide and Installation Instructions and all applicable codes

**Mounting**

Termination fitting between TracPipe or CounterStrike Tubing and NPT thread. Fitting thread is Male NPT. For use indoor, outdoor, and concealed location applications.

**Technical Data**

Materials

Nut, Adapter, and Split Rings	Yellow Brass
Insert and 1" Split Rings	Stainless Steel
Mounting Flange	Steel, black E-coated

Pressure Ratings (used with tubing)

Specification Operating Pressure	25 PSIG
CSA International Evaluation Report - Max Operating Pressure, 3/8" through 1-1/4"	125 PSIG

Temperature Ratings (used with tubing)

Operating Temperature Range	-20 to 200 Deg F
-----------------------------	------------------

**Codes**

ICC Codes (IFGC, IRC, IMC, IPC), NFPA 54, UPC, CAN/CSA B149.1, NFPA 58

**Standards**

ANSI LC1 / CSA 6.26, ANSI Z223.1

**Listings**

CSA

**Dimensional Information**

✓	Size	P/N	Diameter across flats (Nom. in.)	Fitting length (Nom. in.)	TracPipe or CounterStrike x M-NPT Size	Plate size l x w (in.)	Weight (lbs)
<input type="checkbox"/>	3/8"	FGP-RFG-375	15/16	2-3/8	3/8" X 3/8"	3-1/4 x 2-3/4	0.3
<input type="checkbox"/>	1/2"	FGP-RFG-500	1-1/8	2-3/4	1/2" X 1/2"	3-1/4 x 2-3/4	0.5
<input type="checkbox"/>	3/4"	FGP-RFG-750	1-3/8	2-7/8	3/4" X 3/4"	3-1/4 x 2-3/4	0.7
<input type="checkbox"/>	1"	FGP-RFG-1000	1-3/4	3-1/8	1" X 1"	3-1/4 x 2-3/4	0.9
<input type="checkbox"/>	1-1/4"	FGP-RFG-1250	2	3-1/2	1-1/4" X 1-1/4"	3-1/4 x 2-3/4	2.0



Omega Flex, Inc. \* 451 Creamery Way\* Exton, PA 19341

Tel: 610-524-7272 \* Toll Free: 800-671-8622 \* Fax: 610-524-7282

www.omegaflex.com



**Product**

**90° AutoFlare® Steel Flange Mount for TracPipe and CounterStrike**

**Project Information**

Job Name:	Date Submitted:
Location:	Submitted By:
Engineer:	Approved By:
Contractor:	Manufacturer's Rep:

**Installation**

Must be installed in accordance with the TracPipe Design Guide and Installation Instructions and all applicable codes

**Mounting**

Termination fitting between TracPipe or CounterStrike Tubing and NPT thread. Fitting thread is Male NPT. For use indoor, outdoor, and concealed location applications.

**Technical Data**

Materials

Nut, Adapter, and Split Rings	Yellow Brass
Insert and 1" Split Rings	Stainless Steel
Mounting Flange	Steel, black E-coated

Pressure Ratings (used with tubing)

Specification Operating Pressure	25 PSIG
CSA International Evaluation Report - Max Operating Pressure, 3/8" through 1-1/4"	125 PSIG

Temperature Ratings (used with tubing)

Operating Temperature Range	-20 to 200 Deg F
-----------------------------	------------------

**Codes**

ICC Codes (IFGC, IRC, IMC, IPC), NFPA 54, UPC, CAN/CSA B149.1, NFPA 58

**Standards**

ANSI LC1 / CSA 6.26, ANSI Z223.1

**Listings**

CSA

**Dimensional Information**

<input checked="" type="checkbox"/>	Size	P/N	Diameter across flats (Nom. in.)	Fitting length (Nom. in.)	TracPipe or CounterStrike x M-NPT Size	Plate size l x w (in.)	Weight (lbs)
<input type="checkbox"/>	1/2"	FGP-ELS-500	1-1/8	2-11/16	1/2" x 1/2"	3-1/4 x 2-3/4	0.6



**Product**

**90° AutoFlare® Steel Flange Mount (Valve - Female NPT) Assembly for TracPipe and CounterStrike**

**Project Information**

Job Name:	Date Submitted:
Location:	Submitted By:
Engineer:	Approved By:
Contractor:	Manufacturer's Rep:

**Installation**

Must be installed in accordance with the TracPipe Design Guide and Installation Instructions and all applicable codes

**Mounting**

Termination fitting between TracPipe or CounterStrike Tubing with appliance shut-off valve and NPT thread. Fitting thread is Female NPT. For use indoor, outdoor, and concealed location applications.



**Technical Data**

Materials

Nut, Adapter, and Split Rings	Yellow Brass
Insert and 1" Split Rings	Stainless Steel
Mounting Flange	Steel, black E-coated
Valve Body	Plated Brass

Pressure Ratings (used with tubing)

Specification Operating Pressure	1/2 PSIG
Max Test Pressure	60 PSIG

Temperature Ratings (used with tubing)

Operating Temperature Range	32 to 125 Deg F
-----------------------------	-----------------

**Codes**

ICC Codes (IFGC, IRC, IMC, IPC), NFPA 54, UPC, CAN/CSA B149.1, NFPA 58

**Standards**

ANSI LC1 / CSA 6.26, ANSI Z21.15, ANSI Z223.1

**Listings**

CSA

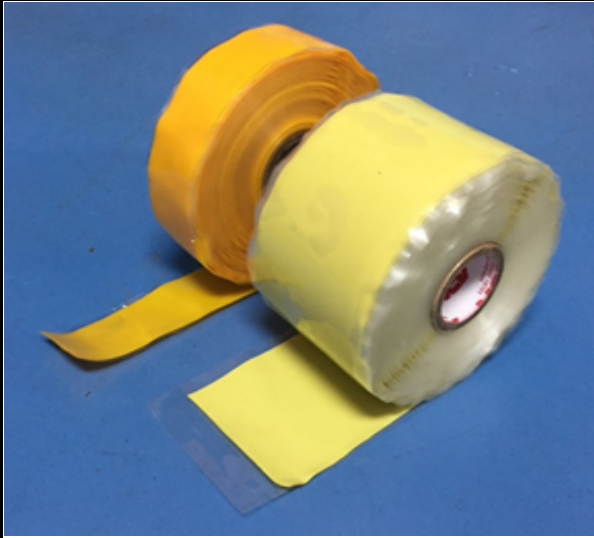
**Dimensional Information**

✓	Size	P/N	Diameter across flats (Nom. in.)	Fitting Height (Nom. in.)	TracPipe or CounterStrike x M-NPT Size	Plate size l x w (in.)	Weight (lbs)
<input type="checkbox"/>	3/8"	FGP-RF90V-375	1	3-1/2	3/8" x 1/2"	3-1/4 x 2-3/4	1.3
<input type="checkbox"/>	1/2"	FGP-RF90V-500	1-1/8	3-3/4	1/2" x 1/2"	3-1/4 x 2-3/4	1.3
<input type="checkbox"/>	3/4"	FGP-RF90V-750	1-3/8	4-9/16	3/4" x 3/4"	3-1/4 x 2-3/4	1.7

Omega Flex, Inc. \* 451 Creamery Way\* Exton, PA 19341

Tel: 610-524-7272 \* Toll Free: 800-671-8622 \* Fax: 610-524-7282

www.omegaflex.com

<b>Product</b>							
Self Bonding Silicone Tape - Yellow							
<b>Project Information</b>							
Job Name:			Date Submitted:				
Location:			Submitted By:				
Engineer:			Approved By:				
Contractor:			Manufacturer's Rep:				
<b>Installation</b>							
Must be installed in accordance with the TracPipe Design Guide and Installation Instructions and all applicable codes							
<b>Application Information</b>							
Apply tape in accordance with section 4.3B of the Canadian TracPipe Design and Installation Guide							
<b>Technical Data</b>							
<u>Materials</u>							
Silicone Rubber - No adhesives permitted							
<u>Temperature Ratings</u>							
Operating Temperature Range		-65 to 260 Deg F					
<b>Codes</b>							
<b>Standards</b>							
<b>Listings</b>							
<b>Dimensional Information</b>							
✓	<i>Pipe / Fitting Size</i>	<i>P/N</i>	<i>Width</i>	<i>Roll Length</i>	<i>Min. tape thickness (in.)</i>		
<input type="checkbox"/>	All	FGP-915-10H-12	1 inch	12 yds	0.020		
<input type="checkbox"/>	All	FGP-915-20H12PO	2 inch	12 yds	0.020		

OmegaFlex, Inc. \* 451 Creamery Way\* Exton, PA 19341

Tel: 610-524-7272 \* Toll Free: 800-671-8622 \* Fax: 610-524-7282

www.omegaflex.com