

## TracPipe Submittal Drawings

Pg No.	Doc No.	Description	Applicable P/N(s)
1	FGP-SUB-CPG	Submittals Cover Page	N/A
2	FGP-SUB-001	TracPipe Gas Piping 3/8" through 2"	FGP-SS4-XXX
3	FGP-SUB-002	Counterstrike Gas Piping, 3/8" through 2"	FGP-CS-XXX
4	FGP-SUB-003	TracPipe PS-II Gas Piping, 3/8" through 2"	FGP-UGP-XXX
5	FGP-SUB-004	AutoFlare Straight Fitting Assy	FGP-FST-XXX
6	FGP-SUB-005	AutoFlare Female Straight Fitting Assy	FGP-SFST-XXX
7	FGP-SUB-006	AutoFlare Coupling Assy	FGP-CPLG-XXX
8	FGP-SUB-008	Flange L Bracket	FGP-TERM-BRAC
9	FGP-SUB-014	AutoFlare x Pipe NPT Tee	FGP-TXXX-XXX
10	FGP-SUB-015	AutoFlare Tee Assy	FGP-TFXXX-TXXX / FGP-RT-XX
11	FGP-SUB-016	Key Valve Bracket Assy	FGP-KVB-XXX
12	FGP-SUB-017	Meter Termination Stub-out M-NPT	FGP-XXX MT
13	FGP-SUB-018	Meter Stud Bracket	FGP-STUD-BRAC
14	FGP-SUB-019	Appliance Stub-out M-NPT	FGP-ASP-500
15	FGP-SUB-020	Fireplace Stub-out M-NPT	FGP-FPT-500
16	FGP-SUB-022	Meter Termination Bracket	FGP-MT-BRAC
17	FGP-SUB-023	Metal Wall Box w/ Valve Assy	FGP-WBTM-XXX
18	FGP-SUB-024	Manifolds FGP-MI-SIZE	FGP-MI-PC, PC-1X, PC-2X
19	FGP-SUB-025	Manifold Bracket	FGP-MB2
20	FGP-SUB-026	Stackable Manifold	FGP-MI-ST-XXX
21	FGP-SUB-027	Stackable Manifold Bracket	FGP-MB-ST
22	FGP-SUB-028	Load Center w/ Manifold Bracket	FGP-LC
23	FGP-SUB-029	Bonding Clamps	FGP-GC-X
24	FGP-SUB-030	PS-II Adapter Assy	FGP-UGF-XXX
25	FGP-SUB-031	PS-II Coupling Assy	FGP-UGC-XXX
26	FGP-SUB-032	Striker Plates	FGP-SP-XXX
27	FGP-SUB-033	Ball Valve 5 psi	FGP-WBV-XXX
28	FGP-SUB-034	Quick Disconnect	FGP-QDS
29	FGP-SUB-036	90 deg Appliance Stub-out	FGP-ASP90S-XXX
30	FGP-SUB-037	AutoSnap Straight Fitting Assy	FGP-SFST-XXX
31	FGP-SUB-038	AutoSnap Female Fitting	FGP-SFSTF-XXX
32	FGP-SUB-039	AutoSnap Coupling Assy.	FGP-SCPLG-XXX
33	FGP-SUB-040	AutoSnap Steel Flange Mount	FGP-SRFG-XXX
34	FGP-SUB-041	Metal Wall Box w/ AutoSnap Valve Assy	FGP-SWBTM-XXX
35	FGP-SUB-042	AutoSnap x Pipe NPT Tee	FGP-STXXX-XXX
36	FGP-SUB-043	AutoSnap Tee Assy	FGP-STFXXX-TXXX / FGP-SRT-
37	FGP-SUB-044	Self Bonding Silicone Tape - Black	FGP-915-10H-12BL
38	FGP-SUB-045	AutoFlare Steel Flange Mount	FGP-RFG-XXX
39	FGP-SUB-046	90 deg AutoFlare Steel Flange Mount	FGP-ELS-500
40	FGP-SUB-047	90 deg AutoFlare Steel Flange Mount w/ AutoSnap Valve Assy	FGP-RF90V-XXX
41	FGP-SUB-048	Floppy Galvanized Steel Conduit	FGP-FPY-XXX-XX

# Submittal Package

Project:

Engineer:

Contractor:

Submitted by:

Date:

---

\*Gas Piping System(s) Included (check all that apply):

- ☐ TracPipe
- ☐ Counterstrike
- ☐ TracPipe PS-II

*\*Gas Piping System includes all related components attached*

## Product

### TracPipe Flexible Gas Piping, 3/8" through 2"

## Project Information

Job Name:	Date Submitted:
Location:	Submitted By:
Engineer:	Approved By:
Contractor:	Manufacturer's Rep:

## Installation

Must be installed in accordance with the TracPipe Design Guide and Installation Instructions and all applicable codes

## Application Information

Yellow Jacketed Flexible Gas Piping for use in Natural Gas and Liquefied Petroleum (Propane) Gas applications. Used with TracPipe AutoFlare fittings and accessories.

## Technical Data

### Materials

Tubing	ASTM A240 300 Series Stainless Steel
Jacket	UV/Ozone Resistant Polyethylene with flame retardent

### Pressure Ratings

Specification Operating Pressure	25 PSIG
CSA International Evaluation Report - Max Operating Pressure, 3/8" through 1-1/4"	125 PSIG

### Temperature Ratings

Operating Temperature Range	-20 to 200 Deg F
Tubing Melting Point	2400 Deg F
Jacket Melting Point	350 Deg F



## Codes

ICC Codes (IFGC, IRC, IMC, IPC), NFPA 54, UPC, CAN/CSA B149.1, NFPA 58

## Standards

ANSI LC1 / CSA 6.26, UL 723 (ASTM E84), ANSI Z223.1

## Listings

CSA, ICC PMG 1046, IAPMO (UPC) File No. 3682, UL (Through Penetration Firestop Systems), FM (Factory Mutual)

## Dimensional Information

✓	Size	*P/N	EHD	OD w/ Jacket (Nom. in.)	OD w/o Jacket (Nom. in.)	ID (Nom. In.)	Tubing Wall Thickness (in.)	Weight (lbs/ft)
<input type="checkbox"/>	3/8"	FGP-SS4-375-XXX	15	0.640	0.600	0.440	0.010	0.12
<input type="checkbox"/>	1/2"	FGP-SS4-500-XXX	19	0.828	0.788	0.597	0.010	0.16
<input type="checkbox"/>	3/4"	FGP-SS4-750-XXX	25	1.080	1.040	0.820	0.010	0.24
<input type="checkbox"/>	1"	FGP-SS4-100-XXX	31	1.355	1.315	1.060	0.010	0.31
<input type="checkbox"/>	1-1/4"	FGP-SS4-125-XXX	37	1.660	1.600	1.290	0.012	0.47
<input type="checkbox"/>	1-1/2"	FGP-SS4-150-XXX	46	1.900	1.840	1.525	0.012	0.56
<input type="checkbox"/>	2"	FGP-SS4-200-XXX	62	2.475	2.415	2.060	0.012	0.85

\*XXX - Denotes Reel size (length of pipe) in feet

Omega Flex, Inc. \* 451 Creamery Way\* Exton, PA 19341

Tel: 610-524-7272 \* Toll Free: 800-671-8622 \* Fax: 610-524-7282

www.omegaflex.com

**Product**
**CounterStrike Flexible Gas Piping, 3/8" through 2"**
**Project Information**

Job Name:	Date Submitted:
Location:	Submitted By:
Engineer:	Approved By:
Contractor:	Manufacturer's Rep:

**Installation**

Must be installed in accordance with the TracPipe Design Guide and Installation Instructions and all applicable codes

**Application Information**

Conductive Jacketed Flexible Gas Piping for use in Natural Gas and Liquified Petroleum (Propane) Gas applications. Used with TracPipe AutoFlare fittings and accessories.

**Technical Data**
**Materials**

Tubing	ASTM A240 300 Series Stainless Steel
Jacket	UV/Ozone Resistant Polyethylene with flame retardant

**Pressure Ratings**

Specification Operating Pressure	25 PSIG
CSA International Evaluation Report - Max Operating Pressure, 3/8" through 1-1/4"	125 PSIG

**Temperature Ratings**

Operating Temperature Range	-20 to 200 Deg F
Tubing Melting Point	2400 Deg F
Jacket Melting Point	350 Deg F


**Codes**

ICC Codes (IFGC, IRC, IMC, IPC), NFPA 54, UPC, CAN/CSA B149.1, NFPA 58

**Standards**

ANSI LC1 / CSA 6.26, UL 723 (ASTM E84), ICC LC 1024, ANSI Z223.1

**Listings**

CSA, ICC PMG 1058, UL (Through Penetration Firestop Systems), IAPMO ES ER-0227

**Dimensional Information**

✓								
	Size	*P/N	EHD	OD w/ Jacket (Nom. in.)	OD w/o Jacket (Nom. in.)	ID (Nom. In.)	Tubing Wall Thickness (in.)	Weight (lbs/ft)
<input type="checkbox"/>	3/8"	FGP-CS-375-XXX	15	0.700	0.600	0.440	0.010	0.15
<input type="checkbox"/>	1/2"	FGP-CS-500-XXX	19	0.888	0.788	0.597	0.010	0.21
<input type="checkbox"/>	3/4"	FGP-CS-750-XXX	25	1.140	1.040	0.820	0.010	0.28
<input type="checkbox"/>	1"	FGP-CS-1000-XXX	31	1.415	1.315	1.060	0.010	0.39
<input type="checkbox"/>	1-1/4"	FGP-CS-1250-XXX	37	1.700	1.600	1.290	0.012	0.52
<input type="checkbox"/>	1-1/2"	FGP-CS-1500-XXX	46	1.940	1.840	1.525	0.012	0.73
<input type="checkbox"/>	2"	FGP-CS-2000-XXX	62	2.515	2.415	2.060	0.012	0.91

\*XXX - Denotes Reel size (length of pipe) in feet

Omega Flex, Inc. \* 451 Creamery Way\* Exton, PA 19341

Tel: 610-524-7272 \* Toll Free: 800-671-8622 \* Fax: 610-524-7282

www.omegaflex.com

**Product**
**TracPipe PS-II Flexible Gas Piping, 3/8" through 2"**
**Project Information**

Job Name:	Date Submitted:
Location:	Submitted By:
Engineer:	Approved By:
Contractor:	Manufacturer's Rep:

**Installation**

Must be installed in accordance with the TracPipe Design Guide and Installation Instructions and all applicable codes

**Application Information**

Black Jacketed "Pre-Sleeved" Flexible Gas Piping approved for direct burial in Underground Natural Gas and Liquified Petroleum (Propane) Gas applications. Used with TracPipe PS-II Male Adapter fittings or Couplings.

**Technical Data**
Materials

Tubing	ASTM A240 300 Series Stainless Steel
Jacket	UV/Ozone Resistant Polyethylene

Pressure Ratings

Specification Operating Pressure	25 PSIG
CSA International Evaluation Report - Max Operating Pressure, 3/8" through 1-1/4"	125 PSIG

Temperature Ratings

Operating Temperature Range	-20 to 200 Deg F
Tubing Melting Point	2400 Deg F
Jacket Melting Point	350 Deg F


**Codes**

ICC Codes (IFGC, IRC, IMC, IPC), NFPA 54, UPC, CAN/CSA B149.1, NFPA 58

**Standards**

ANSI LC1 / CSA 6.26, ANSI Z223.1

**Listings**

CSA, ICC PMG 1052, IAPMO (UPC) File No. 4665

**Dimensional Information**

✓	Size	*P/N	EHD	OD w/ Jacket (Nom. in.)	OD w/o Jacket (Nom. in.)	ID (Nom. In.)	Tubing Wall Thickness (in.)	Weight (lbs/ft)
<input type="checkbox"/>	3/8"	FGP-UGP-375-XXX	15	0.820	0.600	0.440	0.010	0.23
<input type="checkbox"/>	1/2"	FGP-UGP-500-XXX	19	1.080	0.788	0.597	0.010	0.33
<input type="checkbox"/>	3/4"	FGP-UGP-750-XXX	25	1.320	1.040	0.820	0.010	0.43
<input type="checkbox"/>	1"	FGP-UGP-100-XXX	31	1.600	1.315	1.060	0.010	0.57
<input type="checkbox"/>	1-1/4"	FGP-UGP-125-XXX	37	1.960	1.600	1.290	0.012	0.91
<input type="checkbox"/>	1-1/2"	FGP-UGP-150-XXX	46	2.180	1.840	1.525	0.012	1.00
<input type="checkbox"/>	2"	FGP-UGP-200-XXX	62	2.800	2.415	2.060	0.012	1.47

\*XXX - Denotes Reel size (length of pipe) in feet

Omega Flex, Inc. \* 451 Creamery Way\* Exton, PA 19341

Tel: 610-524-7272 \* Toll Free: 800-671-8622 \* Fax: 610-524-7282

www.omegaflex.com

**Product**

**AutoFlare Straight Fitting (Male-NPT) Assembly for TracPipe and CounterStrike**

**Project Information**

Job Name:	Date Submitted:
Location:	Submitted By:
Engineer:	Approved By:
Contractor:	Manufacturer's Rep:

**Installation**

Must be installed in accordance with the TracPipe Design Guide and Installation Instructions and all applicable codes

**Application Information**

Transition fitting between TracPipe or CounterStrike Tubing and NPT thread. Fitting thread is Male NPT. For use indoor, outdoor, and concealed location applications.

**Technical Data**

Materials

Nut, Adapter, and Split Rings	Yellow Brass
Insert and 1" Split Rings	Stainless Steel

Pressure Ratings (used with tubing)

Specification Operating Pressure	25 PSIG
CSA International Evaluation Report - Max Operating Pressure, 3/8" through 1-1/4"	125 PSIG

Temperature Ratings (used with tubing)

Operating Temperature Range	-20 to 200 Deg F
-----------------------------	------------------



**Codes**

ICC Codes (IFGC, IRC, IMC, IPC), NFPA 54, UPC, CAN/CSA B149.1, NFPA 58

**Standards**

ANSI LC1 / CSA 6.26. ANSI Z223.1

**Listings**

CSA, ICC PMG 1046 / 1058, IAPMO (UPC) File No. 3682 / ES ER-0227

**Dimensional Information**

✓			Diameter across flats (Nom. in.)	Fitting length (Nom. in.)	TracPipe or CounterStrike Size	Male NPT Pipe size	Weight (lbs)
Size	P/N						
<input type="checkbox"/> 3/8"	FGP-FST-375N		1"	2"	3/8"	3/8"	0.3
<input type="checkbox"/> 3/8"x1/2"	FGP-FST-375		1"	2"	3/8"	1/2"	0.4
<input type="checkbox"/> 1/2"	FGP-FST-500		1-1/8"	2"	1/2"	1/2"	0.4
<input type="checkbox"/> 1/2"x3/4"	FGP-RST500-750		1-1/8"	2"	1/2"	3/4"	0.4
<input type="checkbox"/> 3/4"	FGP-FST-750		1-3/8"	2-1/8"	3/4"	3/4"	0.5
<input type="checkbox"/> 3/4"x1/2"	FGP-RST750-500		1-3/8"	2"	3/4"	1/2"	0.5
<input type="checkbox"/> 1"	FGP-FST-1000		1-5/8"	2-3/8"	1"	1"	0.7
<input type="checkbox"/> 1"x3/4"	FGP-RST1000-750		1-5/8"	2-1/8"	1"	3/4"	0.7
<input type="checkbox"/> 1-1/4"	FGP-FST-1250		2-1/8"	2-5/8"	1-1/4"	1-1/4"	1.5
<input type="checkbox"/> 1-1/2"	FGP-FST-1500		2-1/2"	3"	1-1/2"	1-1/2"	2.1
<input type="checkbox"/> 2"	FGP-FST-2000		3-1/4"	3-1/16"	2"	2"	3.5

Omega Flex, Inc. \* 451 Creamery Way\* Exton, PA 19341

Tel: 610-524-7272 \* Toll Free: 800-671-8622 \* Fax: 610-524-7282

www.omegaflex.com



**Product**

**AutoFlare Straight Fitting (Female-NPT) Assembly for TracPipe and CounterStrike**

**Project Information**

Job Name:	Date Submitted:
Location:	Submitted By:
Engineer:	Approved By:
Contractor:	Manufacturer's Rep:

**Installation**

Must be installed in accordance with the TracPipe Design Guide and Installation Instructions and all applicable codes

**Application Information**

Transition fitting between TracPipe or CounterStrike Tubing and NPT thread.  
Fitting thread is Female NPT. For use indoor, outdoor, and concealed location applications.

**Technical Data**

Materials

Nut, Adapter, and Split Rings	Yellow Brass
Insert and 1" Split Rings	Stainless Steel

Pressure Ratings (used with tubing)

Specification Operating Pressure	25 PSIG
CSA International Evaluation Report - Max Operating Pressure, 3/8" through 1-1/4"	125 PSIG

Temperature Ratings (used with tubing)

Operating Temperature Range	-20 to 200 Deg F
-----------------------------	------------------



**Codes**

ICC Codes (IFGC, IRC, IMC, IPC), NFPA 54, UPC, CAN/CSA B149.1, NFPA 58

**Standards**

ANSI LC1 / CSA 6.26 ANSI Z223.1

**Listings**

CSA, ICC PMG 1046 / 1058, IAPMO (UPC) File No. 3682 / ES ER-0227

**Dimensional Information**

✓			Diameter across flats (Nom. in.)	Fitting length (Nom. in.)	TracPipe or CounterStrike Size	Female NPT Pipe size	Weight (lbs)
Size	P/N						
<input type="checkbox"/> 3/8"x1/2"	FGP-FSTF-375		1"	1-7/16"	3/8"	1/2"	0.2
<input type="checkbox"/> 1/2"	FGP-FSTF-500		1-1/8"	1-1/2"	1/2"	1/2"	0.3
<input type="checkbox"/> 3/4"	FGP-FSTF-750		1-3/8"	1-3/4"	3/4"	3/4"	0.5
<input type="checkbox"/> 1"	FGP-FSTF-1000		1-5/8"	1-3/4"	1"	1"	0.6

Omega Flex, Inc. \* 451 Creamery Way\* Exton, PA 19341

Tel: 610-524-7272 \* Toll Free: 800-671-8622 \* Fax: 610-524-7282

www.omegaflex.com

FGP-SUB-005

Rev. 03-11

TracPipe, CounterStrike, PS-II, AutoFlare, and AutoTrip are registered trademarks of Omega Flex, Inc.

page 1/1

**Product**

**AutoFlare Coupling Assembly for TracPipe and CounterStrike**

**Project Information**

Job Name:	Date Submitted:
Location:	Submitted By:
Engineer:	Approved By:
Contractor:	Manufacturer's Rep:

**Installation**

Must be installed in accordance with the TracPipe Design Guide and Installation Instructions and all applicable codes

**Application Information**

Coupling fitting for use between like sizes of TracPipe or CounterStrike Tubing.  
For indoor, outdoor, and concealed location applications.

**Technical Data**

Materials

Nut, Adapter, and Split Rings	Yellow Brass
Insert and 1" Split Rings	Stainless Steel

Pressure Ratings (used with tubing)

Specification Operating Pressure	25 PSIG
CSA International Evaluation Report - Max Operating Pressure, 3/8" through 1-1/4"	125 PSIG

Temperature Ratings (used with tubing)

Operating Temperature Range	-20 to 200 Deg F
-----------------------------	------------------



**Codes**

ICC Codes (IFGC, IRC, IMC, IPC), NFPA 54, UPC, CAN/CSA B149.1, NFPA 58

**Standards**

ANSI LC1 / CSA 6.26, ANSI Z223.1

**Listings**

CSA, ICC PMG 1046 / 1058, IAPMO (UPC) File No. 3682 / ES ER-0227

**Dimensional Information**

✓			Diameter	Fitting	TracPipe or	Weight (lbs)
	Size	P/N	across flats (Nom. in.)	length (Nom. in.)	CounterStrike Size	
<input type="checkbox"/>	3/8"	FGP-CPLG-375	1"	2"	3/8" X 3/8"	0.3
<input type="checkbox"/>	1/2"	FGP-CPLG-500	1-1/8"	2-1/16"	1/2" X 1/2"	0.5
<input type="checkbox"/>	3/4"	FGP-CPLG-750	1-3/8"	2-1/4"	3/4" X 3/4"	0.7
<input type="checkbox"/>	1"	FGP-CPLG-1000	1-5/8"	2-11/32"	1" X 1"	0.9
<input type="checkbox"/>	1-1/4"	FGP-CPLG-1250	2-1/8"	2-7/8"	1-1/4" X 1-1/4"	2.0
<input type="checkbox"/>	1-1/2"	FGP-CPLG-1500	2-1/2"	3-3/8"	1-1/2" X 1-1/2"	3.3
<input type="checkbox"/>	2"	FGP-CPLG-2000	3-1/4"	3-5/8"	2" X 2"	5.5

Omega Flex, Inc. \* 451 Creamery Way\* Exton, PA 19341

Tel: 610-524-7272 \* Toll Free: 800-671-8622 \* Fax: 610-524-7282

www.omegaflex.com



**Product**
**Mounting Bracket for Flange Fitting Assembly (optional)**
**Project Information**

Job Name:	Date Submitted:
Location:	Submitted By:
Engineer:	Approved By:
Contractor:	Manufacturer's Rep:

**Installation**

Must be installed in accordance with the TracPipe Design Guide and Installation Instructions and all applicable codes

**Application Information**

May be used for rigid mounting of a TracPipe or CounterStrike Flange Fitting. For indoor, outdoor and concealed location applications.

**Technical Data**
Materials

Galvanized Steel

Pressure Ratings (used with tubing)

N/A

Temperature Ratings (used with tubing)

Operating Temperature Range -20 to 200 Deg F


**Codes**
**Standards**
**Listings**
**Dimensional Information**

			TracPipe or CounterStrike		
			Size	Weight (lbs)	
✓	Size	P/N	L x W x D		
<input type="checkbox"/>	ALL	FGP-TERM BRAC	5" x 5" x 2-3/4"	3/8" thru 1-1/4"	0.3

Omega Flex, Inc. \* 451 Creamery Way\* Exton, PA 19341

Tel: 610-524-7272 \* Toll Free: 800-671-8622 \* Fax: 610-524-7282

www.omegaflex.com

**Product**

**AutoFlare Tee Fitting Tubing by Pipe Outlet for TracPipe and CounterStrike**

**Project Information**

Job Name:	Date Submitted:
Location:	Submitted By:
Engineer:	Approved By:
Contractor:	Manufacturer's Rep:

**Installation**

Must be installed in accordance with the TracPipe Design Guide and Installation Instructions and all applicable codes

**Application Information**

AutoFlare Tee fittings for TracPipe and CounterStrike. Tubing Runs by Pipe Branch.  
Branch Thread is NPT

**Technical Data**

Materials

Nut, Adapter, and Split Rings	Yellow Brass
Insert and 1" Split Rings	Stainless Steel

Pressure Ratings (used with tubing)

Specification Operating Pressure	25 PSIG
CSA International Evaluation Report - Max Operating Pressure	125 PSIG

Temperature Ratings (used with tubing)

Operating Temperature Range	-20 to 200 Deg F
-----------------------------	------------------



**Codes**

ICC Codes (IFGC, IRC, IMC, IPC), NFPA 54, UPC, CAN/CSA B149.1, NFPA 58

**Standards**

ANSI LC1 / CSA 6.26, ANSI Z223.1

**Listings**

CSA, ICC PMG 1046 / 1058, IAPMO (UPC) File No. 3682 / ES ER-0227

**Dimensional Information**

✓					TracPipe or CounterStrike		*Overall Length (Nom. in.)	*Height (Nom. in.)	Weight (lbs)
	Size	P/N	NPT Size	Diameter across flats (Nom. in.)	Size				
<input type="checkbox"/>	1/2"	FGP-T500-750	3/4" M-NPT	1-1/8"	1/2"		3.34	1.97	1.0
<input type="checkbox"/>	1/2"	FGP-T500-500	1/2" F-NPT	1-1/8"	1/2"		3.05	1.82	1.0
<input type="checkbox"/>	3/4"	FGP-T750-500	1/2" F-NPT	1-3/8"	3/4"		3.40	1.97	1.6
<input type="checkbox"/>	3/4"	FGP-T750-750	3/4" F-NPT	1-3/8"	3/4"		3.40	1.97	1.6
<input type="checkbox"/>	1"	FGP-T1000-1000	1" F-NPT	1-5/8"	1"		3.87	2.52	2.2

*\*Note: Overall Length (OAL) and Height dimensions shown as 2 decimal are NOMINAL dimensions ONLY.*

## Product

### AutoFlare Tee Fitting Tubing by Tubing for TracPipe and CounterStrike

#### Project Information

Job Name:

Location:

Engineer:

Contractor:

#### Installation

Must be installed in accordance with the TracPipe Design Guide and Installation Instructions and all applicable codes

#### Application Information

AutoFlare Tee fittings for TracPipe and CounterStrike. Tubing by Tubing Runs. Branch is Tubing.

#### Technical Data

##### Materials

Nut, Adapter, and Split Rings

Yellow Brass

Insert and 1" Split Rings

Stainless Steel

##### Pressure Ratings (used with tubing)

Specification Operating Pressure

25 psig

CSA international Evaluation Report - Max Operating Pressure,

3/8" through 1-1/4"

125 PSIG

##### Temperature Ratings (used with tubing)

Operating Temperature Range

-20 to 200 Deg F



#### Codes

ICC Codes (IFGC, IRC, IMC, IPC), NFPA 54, UPC, CAN/CSA B149.1, NFPA 58

#### Standards

ANSI LC1 / CSA 6.26, ANSI Z223.1

#### Listings

CSA, ICC PMG 1046 / 1058, IAPMO (UPC) File No. 3682 / ES ER-0227

#### Dimensional Information

✓	Size	P/N	R X R X B Sizes TracPipe or CounterStrike Sizes	Diameter across Hex flats R X R X B (Nom. in.)	*Overall Length (Nom. in.)	*Height (Nom. In.)	Weight (lbs)
<input type="checkbox"/>	1/2"	FGP-TF500-T500	1/2" X 1/2" x 1/2"	1-1/8" x 1-1/8" x 1-1/8"	3.05	2.10	1.00
<input type="checkbox"/>	3/4"	FGP-TF750-T500	3/4" X 3/4" x 3/4"	1-3/8" x 1-3/8" x 1-3/8"	3.40	2.33	1.60
<input type="checkbox"/>	1"	FGP-TF1000-T1000	1" X 1" x 1"	1-5/8" x 1-5/8" x 1-5/8"	3.87	2.78	2.20
<input type="checkbox"/>	1/2"	FGP-RT-501	1/2" X 3/8" X 3/8"	1-1/8" x 1" x 1"	3.02	2.08	0.90
<input type="checkbox"/>	3/4"	FGP-RT-751	3/4" X 1/2" X 3/8"	1-5/8" x 1-3/8" x 1"	3.30	2.34	1.10
<input type="checkbox"/>	3/4"	FGP-RT-752	3/4" X 1/2" X 1/2"	1-5/8" x 1-3/8" x 1-3/8"	3.36	2.34	1.10
<input type="checkbox"/>	1"	FGP-RT-1001	1" X 3/4" X 1/2"	1-5/8" x 1-3/8" x 1-1/8"	3.86	2.54	1.80
<input type="checkbox"/>	1"	FGP-RT-1002	1" X 3/4" X 3/4"	1-5/8" x 1-3/8" x 1-3/8"	3.86	2.79	1.80
<input type="checkbox"/>	3/4"	FGP-TF750-T500	3/4" X 3/4" X 1/2"	1-3/8" x 1-3/8" x 1-1/8"	3.39	2.34	1.60
<input type="checkbox"/>	1"	FGP-TF1000-T750	1" X 1" X 3/4"	1-5/8" x 1-5/8" x 1-3/8"	3.88	2.76	2.10
<input type="checkbox"/>	1"	FGP-TF1000-T500	1" X 1" X 1/2"	1-5/8" x 1-5/8" x 1-1/8"	3.89	2.78	2.20
<input type="checkbox"/>	1-1/4"	FGP-TF1250-T1000	1-1/4" X 1-1/4" X 1"	2-1/8" x 2-1/8" x 1-5/8"	4.04	3.07	2.70
<input type="checkbox"/>	1-1/4"	FGP-TF1250-T750	1-1/4" X 1-1/4" X 3/4"	2-1/8" x 2-1/8" x 1-3/8"	4.04	3.07	2.60
<input type="checkbox"/>	1-1/4"	FGP-TF1250-T500	1-1/4" X 1-1/4" X 1/2"	2-1/8" x 2-1/8" x 1-1/8"	4.02	2.99	2.60
<input type="checkbox"/>	1-1/4"	FGP-RT-1251	1-1/4" x 1" x 1"	2-1/8" x 1-5/8" x 1-5/8"	3.81	3.07	2.20
<input type="checkbox"/>	1-1/4"	FGP-RT-1252	1-1/4" x 1" x 3/4"	2-1/8" x 1-5/8" x 1-3/8"	3.86	3.07	2.20
<input type="checkbox"/>	1-1/4"	FGP-RT-1253	1-1/4" x 1" x 1/2"	2-1/8" x 1-5/8" x 1-1/8"	3.86	3.02	2.10
<input type="checkbox"/>	1-1/2"	FGP-TF1500-T1250	1-1/2" x 1-1/2" x 1-1/4"	2-1/2" x 2-1/2" x 2-1/8"	4.75	3.67	4.40
<input type="checkbox"/>	1-1/2"	FGP-TF1500-T1000	1-1/2" x 1-1/2" x 1"	2-1/2" x 2-1/2" x 1-5/8"	4.76	3.44	4.10
<input type="checkbox"/>	1-1/2"	FGP-TF1500-T750	1-1/2" x 1-1/2" x 3/4"	2-1/2" x 2-1/2" x 1-3/8"	4.76	3.45	4.10
<input type="checkbox"/>	1-1/2"	FGP-TF1500-T500	1-1/2" x 1-1/2" x 1/2"	2-1/2" x 2-1/2" x 1-1/8"	4.76	3.40	4.00
<input type="checkbox"/>	1-1/2"	FGP-RT-1501	1-1/2" x 1-1/4" x 1-1/4"	2-1/2" x 2-1/8" x 2-1/8"	4.59	3.75	3.70
<input type="checkbox"/>	1-1/2"	FGP-RT-1502	1-1/2" x 1-1/4" x 1"	2-1/2" x 2-1/8" x 1-5/8"	4.57	3.59	3.60

(P/Ns continued on next page)

Omega Flex, Inc. \* 451 Creamery Way\* Exton, PA 19341

Tel: 610-524-7272 \* Toll Free: 800-671-8622 \* Fax: 610-524-7282

www.omegaflex.com

Product (continued from previous page)

AutoFlare Tee Fitting Tubing by Tubing for TracPipe and CounterStrike

Dimensional Information

✓	R X R X B Sizes						
	Size	P/N	TracPipe or CounterStrike Sizes	Diameter across Hex flats R X R X B (Nom. in.)	*Overall Length (Nom. in.)	*Height (Nom. In.)	Weight (lbs)
<input type="checkbox"/>	1-1/2"	FGP-RT-1503	1-1/2" x 1-1/4" x 3/4"	2-1/2" x 2-1/8" x 1-3/8"	4.57	3.49	3.6
<input type="checkbox"/>	1-1/2"	FGP-RT-1504	1-1/2" x 1-1/4" x 1/2"	2-1/2" x 2-1/8" x 1-1/8"	4.57	3.30	3.5
<input type="checkbox"/>	2"	FGP-TF2000-T1500	2" x 2" 1-1/2"	3-1/4" x 3-1/4" x 2-1/2"	5.40	4.53	7.4
<input type="checkbox"/>	2"	FGP-TF2000-T1250	2" x 2" x 1-1/4"	3-1/4" x 3-1/4" x 2-1/8"	5.40	4.47	7.2
<input type="checkbox"/>	2"	FGP-TF2000-T1000	2" x 2" x 1"	3-1/4" x 3-1/4" x 1-5/8"	5.40	4.47	7.0
<input type="checkbox"/>	2"	FGP-TF2000-T750	2" x 2" x 3/4"	3-1/4" x 3-1/4" x 1-3/8"	5.39	4.31	7.0
<input type="checkbox"/>	2"	FGP-TF2000-T500	2" x 2" x 1/2"	3-1/4" x 3-1/4" x 1-1/8"	5.39	4.12	7.0
<input type="checkbox"/>	2"	FGP-RT-2001	2" x 1-1/2" x 1-1/2"	3-1/4" x 2-1/2" x 2-1/2"	5.38	4.54	6.5
<input type="checkbox"/>	2"	FGP-RT-2002	2" x 1-1/2" x 1-1/4"	3-1/4" x 2-1/2" x 2-1/8"	5.37	4.43	6.3
<input type="checkbox"/>	2"	FGP-RT-2003	2" x 1-1/2" x 1"	3-1/4" x 2-1/2" x 1-5/8"	5.38	4.27	6.1
<input type="checkbox"/>	2"	FGP-RT-2004	2" x 1-1/2" x 3/4"	3-1/4" x 2-1/2" x 1-3/8"	5.38	4.30	6.1
<input type="checkbox"/>	2"	FGP-RT-2005	2" x 1-1/2" x 1/2"	3-1/4" x 2-1/2" x 1-1/8"	5.38	4.13	6.1
*Note: Overall Length (OAL) and Height dimensions shown as 2 decimal are NOMINAL dimensions ONLY.							

Omega Flex, Inc. \* 451 Creamery Way\* Exton, PA 19341

Tel: 610-524-7272 \* Toll Free: 800-671-8622 \* Fax: 610-524-7282

www.omegaflex.com

FGP-SUB-015

Rev. 10-21

TracPipe, CounterStrike, PS-II, AutoFlare, and AutoTrip are registered trademarks of Omega Flex, Inc.

page 2/2

## Product

### Key Valve Bracket Assembly for TracPipe and CounterStrike

#### Project Information

Job Name:	Date Submitted:
Location:	Submitted By:
Engineer:	Approved By:
Contractor:	Manufacturer's Rep:

#### Installation

Must be installed in accordance with the TracPipe Design Guide and Installation Instructions and all applicable codes

#### Application Information

Use for but not limited to rigid mount of fireplace key valve for TracPipe and CounterStrike. May be used indoor, outdoor and in concealed locations.

#### Technical Data

##### Materials

Nut, Adapter, and Split Rings	Yellow Brass
Insert	Stainless Steel
Bracket	Galvanized Steel

##### Pressure Ratings (used with tubing)

Specification Operating Pressure	25 PSIG
CSA International Evaluation Report - Max Operating Pressure	
3/8" through 3/4"	125 PSIG

##### Temperature Ratings (used with tubing)

Operating Temperature Range	-20 to 200 Deg F
-----------------------------	------------------



#### Codes

ICC Codes (IFGC, IRC, IMC, IPC), NFPA 54, UPC, CAN/CSA B149.1, NFPA 58

#### Standards

ANSI LC1 / CSA 6.26, ANSI Z223.1

#### Listings

CSA, ICC PMG 1046 / 1058, IAPMO (UPC) File No. 3682 / ES ER-0227

#### Dimensional Information

✓			Diameter across flats (Nom. in.)	TracPipe or CounterStrike Size	Weight (lbs)
Size	P/N				
<input type="checkbox"/> 3/8"	FGP-KVB-375		1"	3/8"	0.50
<input type="checkbox"/> 1/2"	FGP-KVB-500		1-1/8"	1/2"	0.54
<input type="checkbox"/> 3/4" x 1/2"	FGP-KVB750-500		1-3/8"	3/4"	0.77

Omega Flex, Inc. \* 451 Creamery Way\* Exton, PA 19341

Tel: 610-524-7272 \* Toll Free: 800-671-8622 \* Fax: 610-524-7282

www.omegaflex.com

**Product**
**Meter Termination Stub-Out (Male - NPT)**
**Project Information**

Job Name:	Date Submitted:
Location:	Submitted By:
Engineer:	Approved By:
Contractor:	Manufacturer's Rep:

**Installation**

Must be installed in accordance with the TracPipe Design Guide and Installation Instructions and all applicable codes

**Application Information**

Schedule 40 B.I.P. Meter Stub-Out

**Technical Data**
Materials

Schedule 40 Black Iron Pipe

Pressure Ratings (used with tubing)

Specification Operating Pressure 25 PSIG

CSA International Evaluation Report - Max Operating Pressure  
 3/8" through 3/4" 125 PSIG

Temperature Ratings (used with tubing)

Operating Temperature Range -20 to 200 Deg F


**Codes**

ICC Codes (IFGC, IRC, IMC, IPC), NFPA 54, UPC, CAN/CSA B149.1, NFPA 58

**Standards**
**Listings**
**Dimensional Information**

✓			Mounting Flange Dim (Nom. in.)	Fitting length (Nom. in.)	Weight (lbs)
Size	P/N				
<input type="checkbox"/> 1/2" x 6"	FGP-1/2X6 MT		5" x 5"	6"	1.10
<input type="checkbox"/> 1/2" x 12"	FGP-1/2X12 MT		5" x 5"	12"	1.58
<input type="checkbox"/> 3/4" x 6"	FGP-3/4X6 MT		5" x 5"	6"	1.20
<input type="checkbox"/> 3/4" x 12"	FGP-3/4X12 MT		5" x 5"	12"	1.80
<input type="checkbox"/> 1" x 6"	FGP-1X6 MT		5" x 5"	6"	1.36
<input type="checkbox"/> 1" x 12"	FGP-1X12 MT		5" x 5"	12"	1.95
<input type="checkbox"/> 1-1/4" x 6"	FGP-1-1/4X6 MT		5" x 5"	6"	1.62
<input type="checkbox"/> 1-1/4" x 12"	FGP-1-1/4X12 MT		5" x 5"	12"	2.78

Omega Flex, Inc. \* 451 Creamery Way\* Exton, PA 19341

Tel: 610-524-7272 \* Toll Free: 800-671-8622 \* Fax: 610-524-7282

www.omegaflex.com

FGP-SUB-017

Rev. 10-21

TracPipe, CounterStrike, PS-II, AutoFlare, and AutoTrip are registered trademarks of Omega Flex, Inc.

page 1/1



**Product**

**Meter Stub Bracket**

**Project Information**

Job Name:	Date Submitted:
Location:	Submitted By:
Engineer:	Approved By:
Contractor:	Manufacturer's Rep:

**Installation**

Must be installed in accordance with the TracPipe Design Guide and Installation Instructions and all applicable codes

**Application Information**

For use with FGP-MT Series Meter Terminations (optional) Fits between standard 16" O.C. framing

**Technical Data**

Materials

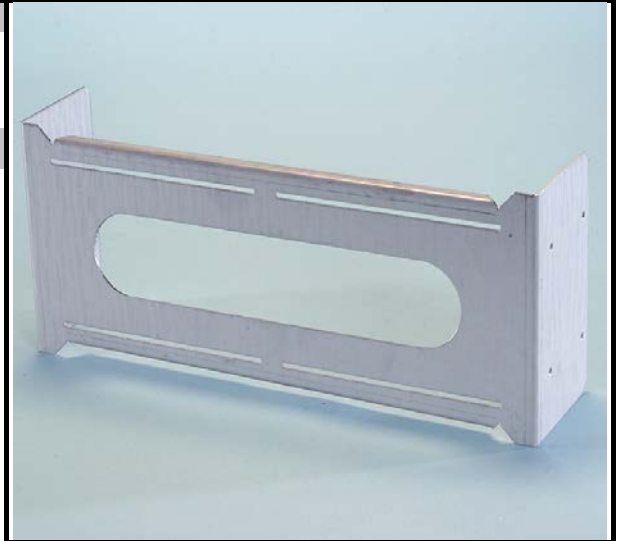
Galvanized Steel

Pressure Ratings (used with tubing)

N/A

Temperature Ratings (used with tubing)

Operating Temperature Range -20 to 200 Deg F



**Codes**

**Standards**

**Listings**

**Dimensional Information**



	Size	P/N	L x H x D	Weight (lbs)
<input type="checkbox"/>	All	FGP-STUD-BRAC	14-1/2" x 6" x 3-3/8"	2.1

Omega Flex, Inc. \* 451 Creamery Way\* Exton, PA 19341

Tel: 610-524-7272 \* Toll Free: 800-671-8622 \* Fax: 610-524-7282

www.omegaflex.com

**Product**
**Appliance Stub Out for Use with TracPipe and CounterStrike**
**Project Information**

Job Name:	Date Submitted:
Location:	Submitted By:
Engineer:	Approved By:
Contractor:	Manufacturer's Rep:

**Installation**

Must be installed in accordance with the TracPipe Design Guide and Installation Instructions and all applicable codes

**Application Information**

Schedule 40 B.I.P. stub out for use at movable appliance locations, with mounting plate

**Technical Data**
Materials

Schedule 40 B.I.P.

Mounting Plate 12 Ga. Carbon Steel

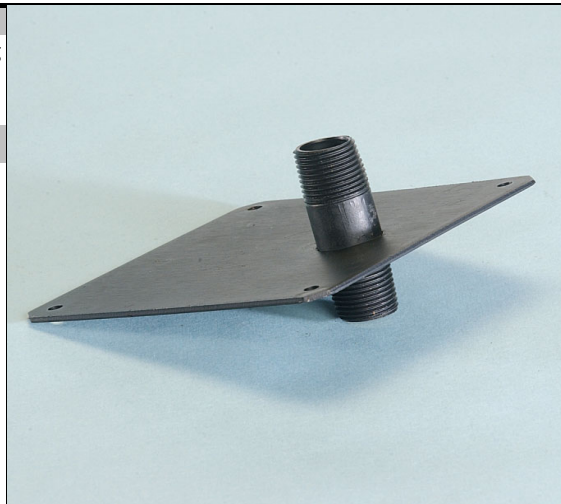
Pressure Ratings (used with tubing)

Specification Operating Pressure 25 PSIG

CSA International Evaluation Report - Max Operating Pressure,  
 3/8" through 1-1/4" 125 PSIG

Temperature Ratings (used with tubing)

Operating Temperature Range -20 to 200 Deg F


**Codes**
**Standards**

NPT Thread per ANSI B1.20.1

**Listings**
**Dimensional Information**

			Mounting Flange Dim (Nom.)	Outlet length (Nom. in.)	TracPipe or CounterStrike Size	Weight (lbs)
✓						
<input type="checkbox"/>	Size 1/2"	P/N FGP-ASP-500	5" x 5"	2-1/4"	1/2"	0.72

Omega Flex, Inc. \* 451 Creamery Way\* Exton, PA 19341

Tel: 610-524-7272 \* Toll Free: 800-671-8622 \* Fax: 610-524-7282

www.omegaflex.com

**Product**

**Fireplace Stub-Out (Male - NPT) for Use with TracPipe and CounterStrike**

**Project Information**

Job Name:	Date Submitted:
Location:	Submitted By:
Engineer:	Approved By:
Contractor:	Manufacturer's Rep:

**Installation**

Must be installed in accordance with the TracPipe Design Guide and Installation Instructions and all applicable codes

**Application Information**

Mounting plate with NPT B.I.P. Nipple. Angled to match the fireplace cabinet penetration requirements.

**Technical Data**

Materials

Schedule 40 B.I.P.  
Mounting Plate 12 ga. Carbon Steel

Pressure Ratings (used with tubing)

Specification Operating Pressure	25 PSIG
CSA International Evaluation Report - Max Operating Pressure, 3/8" through 1-1/4"	125 PSIG

Temperature Ratings (used with tubing)

Operating Temperature Range	-20 to 200 Deg F
-----------------------------	------------------



**Codes**

**Standards**

NPT Threads per ANSI B1.20.1

**Listings**

**Dimensional Information**

			Flange Mount Dim (Nom)	Fitting length (Nom. in.)	TracPipe or CounterStrike Size	Weight (lbs)
✓						
<input type="checkbox"/>	Size 1/2"	P/N FGP-FPT-500	5" x 5"	5-1/2"	1/2"	0.72

Omega Flex, Inc. \* 451 Creamery Way\*Exton, PA 19341

Tel: 610-524-7272 \* Toll Free: 800-671-8622 \* Fax: 610-524-7282

www.omegaflex.com

**Product**
**Meter Termination Bracket for TracPipe and CounterStrike**
**Project Information**

Job Name:	Date Submitted:
Location:	Submitted By:
Engineer:	Approved By:
Contractor:	Manufacturer's Rep:

**Installation**

Must be installed in accordance with the TracPipe Design Guide and Installation Instructions and all applicable codes

**Application Information**

Used with FGP-MT Meter Termination series

**Technical Data**
Materials

Galvanized Steel

Pressure Ratings (used with tubing)

N/A

Temperature Ratings (used with tubing)

Operating Temperature Range -20 to 200 Deg F


**Codes**
**Standards**
**Listings**
**Dimensional Information**

			TracPipe or CounterStrike	
Size	P/N	L x H x D	Size	Weight (lbs)
<input type="checkbox"/> All	FGP-MT-BRAC	5" x 5" x 2-3/4"	1/2" THRU 1"	0.8

Omega Flex, Inc. \* 451 Creamery Way\* Exton, PA 19341

Tel: 610-524-7272 \* Toll Free: 800-671-8622 \* Fax: 610-524-7282

www.omegaflex.com

**Product**

**Metal Wall Box with 90° Valve Assembly for use with TracPipe and CounterStrike**

**Project Information**

Job Name:	Date Submitted:
Location:	Submitted By:
Engineer:	Approved By:
Contractor:	Manufacturer's Rep:

**Installation**

Must be installed in accordance with the TracPipe Design Guide and Installation Instructions and all applicable codes

**Application Information**

Metal wall box with valve for use with zero clearance appliance installations. Reverse Mounting tabs to accommodate double sheetrock walls. For Indoor Use Only. Wall Box is Fire Rated to UL 1479.

**Technical Data**

Materials

Nut, Adapter, Flange and Split Rings	Yellow Brass
Insert	Stainless Steel
Wall Box	Powder Coated Steel

Pressure Ratings (used with tubing)

Specification Operating Pressure	1/2 PSIG
Max Test Pressure	60 PSIG

Temperature Ratings (used with tubing)

Operating Temperature Range	-20 to 200 Deg F
-----------------------------	------------------



**Codes**

ICC Codes (IFGC, IRC, IMC, IPC), NFPA 54, UPC, CAN/CSA B149.1, NFPA 58

**Standards**

ANSI LC1 / CSA 6.26, ANSI Z21.15, ANSI Z223.1, UL 1479

**Listings**

CSA, ICC PMG 1046 / 1058, IAPMO (UPC) File No. 3682 / ES ER-0227

**Dimensional Information**

✓			Diameter across flats (Nom. in.)		Box Dim L x H x		Valve Outlet	TracPipe or CounterStrike	
	Size	P/N	Nut	Valve Body	D	Trim Ring Dim	NPT	Size	Weight (lbs)
<input type="checkbox"/>	3/8"	FGP-WBTM-375	1"	1-1/8"	5" x 5" x 3-1/8"	6-3/4" x 6-3/4"	1/2"	3/8"	2.3
<input type="checkbox"/>	1/2"	FGP-WBTM-500	1-1/8"	1-1/8"	5" x 5" x 3-1/8"	6-3/4" x 6-3/4"	1/2"	1/2"	2.3
<input type="checkbox"/>	3/4"	FGP-WBTM-750	1-3/8"	1-3/8"	5" x 5" x 3-1/8"	6-3/4" x 6-3/4"	3/4"	3/4"	2.8

Omega Flex, Inc. \* 451 Creamery Way\* Exton, PA 19341

Tel: 610-524-7272 \* Toll Free: 800-671-8622 \* Fax: 610-524-7282

www.omegaflex.com

**Product**
**Manifolds for use with TracPipe and CounterStrike**
**Project Information**

Job Name:	Date Submitted:
Location:	Submitted By:
Engineer:	Approved By:
Contractor:	Manufacturer's Rep:

**Installation**

Must be installed in accordance with the TracPipe Design Guide and Installation Instructions and all applicable codes

**Application Information**

Manifolds used to facilitate parallel piping installations. May be used in concealed locations on low pressure systems without Line Pressure regulators. Equipped with a 1/8" F-NPT Pressure test port.

**Technical Data**
**Materials**

Cast Iron, Gray Polyester or Epoxy coated

**Pressure Ratings (used with tubing)**

Specification Operating Pressure 25 PSIG

CSA International Evaluation Report - Max Operating Pressure,  
3/8" through 1-1/4" 125 PSIG

**Temperature Ratings (used with tubing)**

Operating Temperature Range -20 to 200 Deg F


**Codes**

ICC Codes (IFGC, IRC, IMC, IPC), NFPA 54, UPC, CAN/CSA B149.1, NFPA 58

**Standards**

ANSI LC1 / CSA 6.26, ANSI Z223.1

**Listings**

CSA, ICC PMG 1046 / 1058, IAPMO (UPC) File No. 3682 / ES ER-0227

**Dimensional Information**

		Manifold length		Run Sizes		Port Size		Weight (lbs)
✓	P/N	OD (Nom. in.)	(Nom. in.)					
<input type="checkbox"/>	FGP-MI-PC	1-1/2"	9-5/8"	1/2", 3/4"	1/2"			1.9
<input type="checkbox"/>	FGP-MI-PC-1X	2"	11-1/2"	1", 1-1/4"	3/4"			5.5
<input type="checkbox"/>	FGP-MI-PC-2X	3-1/8"	14-5/8"	1-1/2", 2"	1"			13

Omega Flex, Inc. \* 451 Creamery Way\* Exton, PA 19341

Tel: 610-524-7272 \* Toll Free: 800-671-8622 \* Fax: 610-524-7282

www.omegaflex.com



**Product**

**Manifold Bracket**

**Project Information**

Job Name:	Date Submitted:
Location:	Submitted By:
Engineer:	Approved By:
Contractor:	Manufacturer's Rep:

**Installation**

Must be installed in accordance with the TracPipe Design Guide and Installation Instructions and all applicable codes

**Application Information**

For use with FGP-MI-PC manifold only

**Technical Data**

Materials

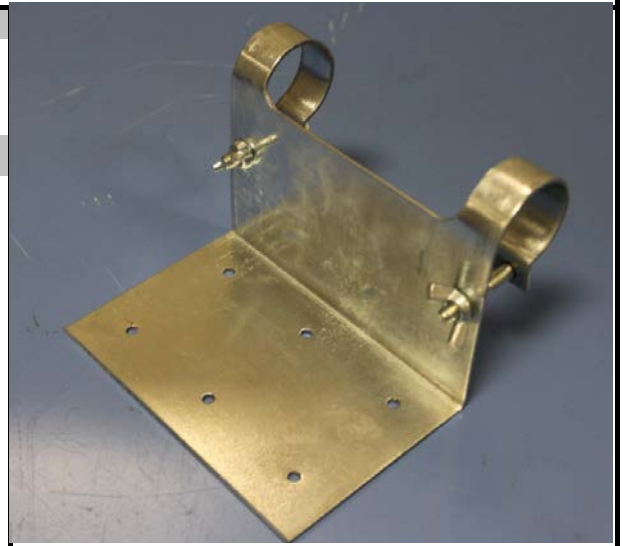
Galvanized Steel

Pressure Ratings (used with tubing)

N/A

Temperature Ratings (used with tubing)

Operating Temperature Range -20 to 200 Deg F



**Codes**

**Standards**

**Listings**

**Dimensional Information**

✓			
	<i>P/N</i>	<i>L x H x D</i>	<i>Weight (lbs)</i>
<input type="checkbox"/>	FGP-MB2	5-1/4" x 5-1/4" x 4"	1.3

**Product**
**Stackable Manifold**
**Project Information**

Job Name:	Date Submitted:
Location:	Submitted By:
Engineer:	Approved By:
Contractor:	Manufacturer's Rep:

**Installation**

Must be installed in accordance with the TracPipe Design Guide and Installation Instructions and all applicable codes

**Application Information**

Two port manifolds with pressure test port designed for smaller systems and to facilitate additional outlets to existing manifold installations. Equipped with a 1/8" F-NPT Pressure test port.

**Technical Data**
Materials

Cast Iron, Gray Polyester or Epoxy coated

Pressure Ratings (used with tubing)

Specification Operating Pressure	25 PSIG
CSA International Evaluation Report - Max Operating Pressure, 3/8" through 1-1/4"	125 PSIG

Temperature Ratings (used with tubing)

Operating Temperature Range	-20 to 200 Deg F
-----------------------------	------------------


**Codes**

ICC Codes (IFGC, IRC, IMC, IPC), NFPA 54, UPC, CAN/CSA B149.1, NFPA 58

**Standards**

ANSI LC1 / CSA 6.26, ANSI Z223.1

**Listings**

CSA, ICC PMG 1046 / 1058, IAPMO (UPC) File No. 3682 / ES ER-0227

**Dimensional Information**

✓	Manifold				Run		Weight (lbs)
	Size	P/N	OD (Nom In.)	Length (Nom In.)	Port Size	FNPT - MNPT	
<input type="checkbox"/>	1/2"	FGP-MI-ST-500	1-3/8"	6"	1/2"	1/2" - 1/2"	1.4
<input type="checkbox"/>	3/4"	FGP-MI-ST-750	1-3/8"	6"	1/2"	3/4" - 3/4"	1.4

Omega Flex, Inc. \* 451 Creamery Way\* Exton, PA 19341

Tel: 610-524-7272 \* Toll Free: 800-671-8622 \* Fax: 610-524-7282

www.omegaflex.com

**Product**
**Stackable Manifold Bracket**
**Project Information**

Job Name:	Date Submitted:
Location:	Submitted By:
Engineer:	Approved By:
Contractor:	Manufacturer's Rep:

**Installation**

Must be installed in accordance with the TracPipe Design Guide and Installation Instructions and all applicable codes

**Application Information**

Mounting bracket for use with Stackable Manifolds

**Technical Data**
Materials

Galvanized Steel

Pressure Ratings (used with tubing)

N/A

Temperature Ratings (used with tubing)

Operating Temperature Range -20 to 200 Deg F


**Codes**
**Standards**
**Listings**
**Dimensional Information**

✓

	P/N	L x H x W	Weight (lbs)
<input type="checkbox"/>	FGP-MB-ST	4" x 4-1/2" x 1-1/2"	0.4

Omega Flex, Inc. \* 451 Creamery Way\* Exton, PA 19341

Tel: 610-524-7272 \* Toll Free: 800-671-8622 \* Fax: 610-524-7282

www.omegaflex.com

**Product**

**Load Center w/ Manifold Bracket for use with TracPipe and CounterStrike**

**Project Information**

Job Name:	Date Submitted:
Location:	Submitted By:
Engineer:	Approved By:
Contractor:	Manufacturer's Rep:

**Installation**

Must be installed in accordance with the TracPipe Design Guide and Installation Instructions and all applicable codes

**Application Information**

For use with FGP-MI-PC Manifold and FGP-REG-3 Regulator only. Load center will mount between standard 16" O.C. Studs. Does not include piping or Regulator.

**Technical Data**

Materials

Powder Coated Steel

Pressure Ratings (used with tubing)

N/A

Temperature Ratings (used with tubing)

Operating Temperature Range -20 to 200 Deg F



**Codes**

**Standards**

**Listings**

**Dimensional Information**

✓

	Size	P/N	L x W x D	Weight (lbs)
<input type="checkbox"/>		FGP-LC	25-1/4" x 15-3/4" x 4-1/4"	11.3

Omega Flex, Inc. \* 451 Creamery Way\* Exton, PA 19341

Tel: 610-524-7272 \* Toll Free: 800-671-8622 \* Fax: 610-524-7282

www.omegaflex.com

FGP-SUB-028

Rev. 03-11

TracPipe, CounterStrike, PS-II, AutoFlare, and AutoTrip are registered trademarks of Omega Flex, Inc.

page 1/1

**Product**

**Bonding Clamps**

**Project Information**

Job Name:	Date Submitted:
Location:	Submitted By:
Engineer:	Approved By:
Contractor:	Manufacturer's Rep:

**Installation**

Must be installed in accordance with the TracPipe Design Guide and Installation Instructions and all applicable codes

**Application Information**

UL 467 Tested Bonding Clamp for use on Pipe and Brass Fitting Hex Flats.

**Technical Data**

Materials

Body	Brass
Screw	Stainless Steel

Pressure Ratings (used with tubing)

N/A

Temperature Ratings (used with tubing)

Operating Temperature Range -20 to 200 Deg F



**Codes**

NFPA 780

**Standards**

UL 467/CSA C22.2

**Listings**

UL

**Dimensional Information**

		TracPipe or CounterStrike	
		Size	Weight (lbs)
✓	P/N		
<input type="checkbox"/>	FGP-GC-1	3/8", 1/2", 3/4"	0.2
<input type="checkbox"/>	FGP-GC-2	1", 1-1/4"	0.4
<input type="checkbox"/>	FGP-GC-3	1-1/2", 2"	1.0

Omega Flex, Inc. \* 451 Creamery Way\* Exton, PA 19341

Tel: 610-524-7272 \* Toll Free: 800-671-8622 \* Fax: 610-524-7282

www.omegaflex.com

FGP-SUB-029

Rev. 03-11

TracPipe, CounterStrike, PS-II, AutoFlare, and AutoTrip are registered trademarks of Omega Flex, Inc.

page 1/1

**Product**
**PS-II Adapter Assembly (Male NPT)**
**Project Information**

Job Name:	Date Submitted:
Location:	Submitted By:
Engineer:	Approved By:
Contractor:	Manufacturer's Rep:

**Installation**

Must be installed in accordance with the TracPipe Design Guide and Installation Instructions and all applicable codes

**Application Information**

Connection of PS-II to NPT fitting.

**Technical Data**
Materials

Nut, Adapter, Flange and Split Rings	Yellow Brass
Insert and 1" Split Ring	Stainless Steel

Pressure Ratings (used with tubing)

Specification Operating Pressure	25 PSIG
Max Test Pressure	40 PSIG

Temperature Ratings (used with tubing)

Operating Temperature Range	-20 to 200 Deg F
-----------------------------	------------------


**Codes**

ICC Codes (IFGC, IRC, IMC, IPC), NFPA 54 , UPC, CAN/CSA B149.1, NFPA 58

**Standards**

ANSI LC1 / CSA 6.26, ANSI Z223.1

**Listings**

CSA, ICC PMG 1046 / 1052, IAPMO (UPC) File No. 4665

**Dimensional Information**

✓			Diameter across flats (Nom. in.)	Fitting length (Nom. in.)	TracPipe or CounterStrike Size	Weight (lbs)
Size	P/N					
<input type="checkbox"/> 3/8"	FGP-UGF-375		1"	3-3/4"	3/8"	0.45
<input type="checkbox"/> 1/2"	FGP-UGF-500		1-1/8"	3-7/8"	1/2"	0.50
<input type="checkbox"/> 3/4"	FGP-UGF-750		1-3/8"	4-1/8"	3/4"	0.65
<input type="checkbox"/> 1"	FGP-UGF-1000		1-5/8"	4-3/4"	1"	0.90
<input type="checkbox"/> 1-1/4"	FGP-UGF-1250		2-5/8"	5-1/4"	1-1/4"	1.60
<input type="checkbox"/> 1-1/2"	FGP-UGF-1500		3"	5-7/8"	1-1/2"	2.65
<input type="checkbox"/> 2"	FGP-UGF-2000		3-1/16"	6-1/2"	2"	4.30

Omega Flex, Inc. \* 451 Creamery Way\* Exton, PA 19341

Tel: 610-524-7272 \* Toll Free: 800-671-8622 \* Fax: 610-524-7282

www.omegaflex.com



**Product**
**PS-II Coupling Assembly**
**Project Information**

Job Name:	Date Submitted:
Location:	Submitted By:
Engineer:	Approved By:
Contractor:	Manufacturer's Rep:

**Installation**

Must be installed in accordance with the TracPipe Design Guide and Installation Instructions and all applicable codes

**Application Information**

Connection of identical sizes of PS-II.

**Technical Data**
Materials

Nut, Adapter, Flange and Split Rings	Yellow Brass
Insert and 1" Split Ring	Stainless Steel

Pressure Ratings (used with tubing)

Specification Operating Pressure	25 PSIG
Max Test Pressure	40 PSIG

Temperature Ratings (used with tubing)

Operating Temperature Range	-20 to 200 Deg F
-----------------------------	------------------


**Codes**

ICC Codes (IFGC, IRC, IMC, IPC), NFPA 54, UPC, CAN/CSA B149.1, NFPA 58

**Standards**

ANSI LC1 / CSA 6.26, ANSI Z223.1

**Listings**

CSA, ICC PMG 1046 / 1052, IAPMO (UPC) File No. 4665

**Dimensional Information**

✓			Diameter across flats (Nom. in.)	Fitting length (Nom. in.)	TracPipe or CounterStrike Size	Weight (lbs)
Size	P/N					
<input type="checkbox"/> 3/8"	FGP-UGC-375		1"	6"	3/8"	0.65
<input type="checkbox"/> 1/2"	FGP-UGC-500		1-1/8"	6-1/4"	1/2"	0.70
<input type="checkbox"/> 3/4"	FGP-UGC-750		1-3/8"	7-1/8"	3/4"	1.05
<input type="checkbox"/> 1"	FGP-UGC-1000		1-5/8"	7-5/8"	1"	1.40
<input type="checkbox"/> 1-1/4"	FGP-UGC-1250		2-5/8"	8-3/8"	1-1/4"	2.50
<input type="checkbox"/> 1-1/2"	FGP-UGC-1500		3"	10-1/8"	1-1/2"	4.25
<input type="checkbox"/> 2"	FGP-UGC-2000		3-1/16"	10-5/8"	2"	6.90

Omega Flex, Inc. \* 451 Creamery Way\* Exton, PA 19341

Tel: 610-524-7272 \* Toll Free: 800-671-8622 \* Fax: 610-524-7282

www.omegaflex.com

## Product

### Striker Plates

#### Project Information

Job Name:	Date Submitted:
Location:	Submitted By:
Engineer:	Approved By:
Contractor:	Manufacturer's Rep:

#### Installation

Must be installed in accordance with the TracPipe Design Guide and Installation Instructions and all applicable codes

#### Application Information

Protection from Potential Puncture

#### Technical Data

##### Materials

Hardened Steel RB >75

##### Pressure Ratings (used with tubing)

N/A

##### Temperature Ratings (used with tubing)

Operating Temperature Range N/A



#### Codes

ICC Codes (IFGC, IRC, IMC, IPC), NFPA 54 , UPC, CAN/CSA B149.1, NFPA 58, UPC

#### Standards

ANSI LC1 / CSA 6.26, ANSI Z223.1

#### Listings

CSA, ICC PMG 1046 / 1052/ 1058 IAPMO (UPC) File No.3682 / 4665 / ES ER-0227

#### Dimensional Information

✓

	P/N	L x W	Weight (lbs)
<input type="checkbox"/>	FGP-SP-025	1-1/2" x 3"	0.1
<input type="checkbox"/>	FGP-SP-050	6-1/2" x 3"	0.3
<input type="checkbox"/>	FGP-SP-075	8" x 3"	0.4
<input type="checkbox"/>	FGP-SP-100	11-1/2" x 3"	0.6
<input type="checkbox"/>	FGP-SP-617	17" x 6-1/2"	1.8

Omega Flex, Inc. \* 451 Creamery Way\* Exton, PA 19341

Tel: 610-524-7272 \* Toll Free: 800-671-8622 \* Fax: 610-524-7282

www.omegaflex.com

**Product**

**Ball Valve - Full Flow**

**Project Information**

Job Name:	Date Submitted:
Location:	Submitted By:
Engineer:	Approved By:
Contractor:	Manufacturer's Rep:

**Installation**

Must be installed in accordance with the TracPipe Design Guide and Installation Instructions and all applicable codes

**Application Information**

Ball valve for installation upstream of the Line Pressure Regulator in elevated pressure systems. May be used for appliance shu-off valave

**Technical Data**

Materials

Yellow Brass

Pressure Ratings (used with tubing)

Specification Operating Pressure	25 PSIG
Max Test Pressure	100 PSIG

Temperature Ratings (used with tubing)

Operating Temperature Range	-20 to 200 Deg F
-----------------------------	------------------



**Codes**

ICC Codes (IFGC, IRC, IMC, IPC), NFPA 54 /, UPC, CAN/CSA B149.1, NFPA 58, UPC

**Standards**

ANSI LC1 / CSA 6.26, ANSI Z22.15, ANSI Z223.1, ASME B16.33 or ASME B16.44

**Listings**

CSA, ICC PMG 1046 / 1052, 1058 IAPMO (UPC) File No.3682 / 4665 / ES ER-0227

**Dimensional Information**

			Valve length (Nom. in.)	Weight (lbs)
✓	Size	P/N		
<input type="checkbox"/>	1/2"	FGP-WBV-500	2-1/4"	0.5
<input type="checkbox"/>	3/4"	FGP-WBV-750	2-3/4"	0.8

OmegaFlex, Inc. \* 451 Creamery Way\* Exton, PA 19341

Tel: 610-524-7272 \* Toll Free: 800-671-8622 \* Fax: 610-524-7282

www.omegaflex.com

FGP-SUB-033

Rev. 03-11

TracPipe, Counterstrike, PS-II, AutoFlare, and AutoTrip are registered trademarks of OmegaFlex, Inc.

page 1/1

## Product

### Quick Disconnect with Appliance Shut-Off Valve

#### Project Information

Job Name:	Date Submitted:
Location:	Submitted By:
Engineer:	Approved By:
Contractor:	Manufacturer's Rep:

#### Installation

Must be installed in accordance with the TracPipe Design Guide and Installation Instructions and all applicable codes

#### Application Information

For use at but not limited to outdoor BBQ and Patio Heater Locations. Indoor and outdoor use

#### Technical Data

##### Materials

Yellow Brass

##### Pressure Ratings (used with tubing)

Specification Operating Pressure	1/2 psig
Max Test Pressure	40 PSIG

##### Temperature Ratings (used with tubing)

Operating Temperature Range	-20 to 200 Deg F
-----------------------------	------------------



#### Codes

ICC Codes (IFGC, IRC, IMC, IPC), NFPA 54, UPC, CAN/CSA B149.1, NFPA 58, UPC

#### Standards

ANSI Z21.41/CSA-6.9 or ANSI Z21.90/CSA-6.24, ANSI Z223.1

#### Listings

CSA, ICC PMG 1046 / 1052 / 1058 IAPMO (UPC) File No. 3682 / 4665 / ES ER-0227

#### Dimensional Information

				Valve length (Nom. in.)	Weight (lbs)
✓					
Size	P/N				
<input type="checkbox"/> 1/2"	FGP-QDS			4-1/4"	0.9

Omega Flex, Inc. \* 451 Creamery Way\* Exton, PA 19341

Tel: 610-524-7272 \* Toll Free: 800-671-8622 \* Fax: 610-524-7282

www.omegaflex.com

**Product**
**90 deg. Appliance Stub Out for Use with TracPipe and CounterStrike**
**Project Information**

Job Name:	Date Submitted:
Location:	Submitted By:
Engineer:	Approved By:
Contractor:	Manufacturer's Rep:

**Installation**

Must be installed in accordance with the TracPipe Design Guide and Installation Instructions and all applicable codes

**Application Information**

Schedule 40 B.I.P. 90 deg. stub out for use at movable appliance locations, with mounting plate

**Technical Data**
Materials

Schedule 40 B.I.P.

Mounting Plate 12 Ga. Carbon Steel

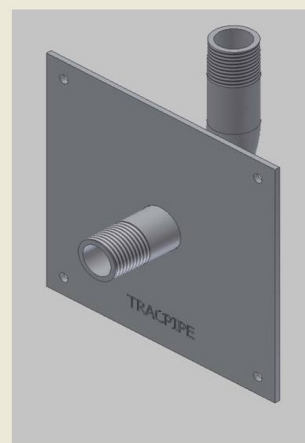
Pressure Ratings (used with tubing)

Specification Operating Pressure 25 PSIG

 CSA International Evaluation Report - Max Operating Pressure,  
 3/8" through 1-1/4" 125 PSIG

Temperature Ratings (used with tubing)

Operating Temperature Range -20 to 200 Deg F


**Codes**
**Standards**

NPT Thread per ANSI B1.20.1

**Listings**
**Dimensional Information**

			Mounting Flange Dim (	Outlet length	TracPipe or CounterStrike	
			Nom)	(Nom. in.)	Size	Weight (lbs)
✓	Size	P/N				
<input type="checkbox"/>	1/2"	FGP-ASP90S-500	5" x 5"	2-1/4"	1/2"	0.95
<input type="checkbox"/>	3/4"	FGP-ASP90S-750	5" x 5"	2-1/4"	3/4"	1.25

Omega Flex, Inc. \* 451 Creamery Way\* Exton, PA 19341

Tel: 610-524-7272 \* Toll Free: 800-671-8622 \* Fax: 610-524-7282

www.omegaflex.com

**Product**

**AutoSnap® Straight Fitting (Male-NPT) Assembly for TracPipe and CounterStrike**

**Project Information**

Job Name:	Date Submitted:
Location:	Submitted By:
Engineer:	Approved By:
Contractor:	Manufacturer's Rep:

**Installation**

Must be installed in accordance with the TracPipe Design Guide and Installation Instructions and all applicable codes

**Application Information**

Transition fitting between TracPipe or CounterStrike Tubing and NPT thread.  
Fitting thread is Male NPT. For use indoor, outdoor, and concealed location applications.

**Technical Data**

Materials

Nut, Adapter, and Snap Ring                      Yellow Brass

Pressure Ratings (used with tubing)

Specification Operating Pressure	25 PSIG
CSA International Evaluation Report - Max Operating Pressure, 3/8" through 1-1/4"	125 PSIG

Temperature Ratings (used with tubing)

Operating Temperature Range	-20 to 200 Deg F
-----------------------------	------------------



**Codes**

ICC Codes (IFGC, IRC, IMC, IPC), NFPA 54, UPC, CAN/CSA B149.1, NFPA 58

**Standards**

ANSI LC1 / CSA 6.26. ANSI Z223.1

**Listings**

CSA, ICC PMG 1046 / 1058,

**Dimensional Information**

✓			Diameter across flats (Nom. in.)	Fitting length (Nom. in.)	TracPipe or CounterStrike Size	Male NPT Pipe size	Weight (lbs)
Size	P/N						
<input type="checkbox"/> 3/8"	FGP-SFST-375N		15/16"	2-1/8"	3/8"	3/8"	0.2
<input type="checkbox"/> 3/8"x1/2"	FGP-SFST-375		15/16"	2-1/8"	3/8"	1/2"	0.2
<input type="checkbox"/> 1/2"	FGP-SFST-500		1-1/8"	2-1/8"	1/2"	1/2"	0.3
<input type="checkbox"/> 1/2"x3/4"	FGP-SRST500-750		1-1/8"	2"	1/2"	3/4"	0.4
<input type="checkbox"/> 3/4"	FGP-SFST-750		1-3/8"	2-1/4"	3/4"	3/4"	0.4
<input type="checkbox"/> 3/4"x1/2"	FGP-SRST750-500		1-3/8"	2"	3/4"	1/2"	0.5
<input type="checkbox"/> 1"	FGP-SFST-1000		1-3/4"	2-1/2"	1"	1"	0.7
<input type="checkbox"/> 1"x3/4"	FGP-SRST1000-750		1-3/4"	2-1/8"	1"	3/4"	0.8
<input type="checkbox"/> 1-1/4"	FGP-SFST-1250		2"	2-3/4"	1-1/4"	1-1/4"	0.9
<input type="checkbox"/> 1-1/2"	FGP-SFST-1500		2-3/8"	3-1/4"	1-1/2"	1-1/2"	1.3
<input type="checkbox"/> 2"	FGP-SFST-2000		2-7/8"	3-1/2"	2"	2"	2.15

Omega Flex, Inc. \* 451 Creamery Way\* Exton, PA 19341

Tel: 610-524-7272 \* Toll Free: 800-671-8622 \* Fax: 610-524-7282

www.omegaflex.com



**Product**
**AutoSnap® Straight Fitting (Female-NPT) Assembly for TracPipe® and TracPipe® CounterStrike®**
**Project Information**

Job Name:	Date Submitted:
Location:	Submitted By:
Engineer:	Approved By:
Contractor:	Manufacturer's Rep:

**Installation**

Must be installed in accordance with the TracPipe Design Guide and Installation Instructions and all applicable codes

**Application Information**

Transition fitting between TracPipe or CounterStrike Tubing and NPT thread.  
Fitting thread is Female NPT. For use indoors, outdoors, and concealed location applications.

**Technical Data**
Materials

Nut, Adapter, Flange and Snap Ring      Yellow Brass

Pressure Ratings (used with tubing)

Specification Operating Pressure      25 PSIG  
CSA International Evaluation Report - Max Operating Pressure  
3/8" through 1-1/4"      125 PSIG

Temperature Ratings (used with tubing)

Operating Temperature Range      -20 to 200 Deg F


**Codes**

ICC Codes (IFGC, IRC, IMC), NFPA 54 / ANSI Z223.1, UPC, CAN/CSA B149.1, NFPA 58, UPC

**Standards**

ANSI LC1 / CSA 6.26, ANSI Z223.1

**Listings**

CSA, ICC PMG 1046 / 1052, IAPMO (UPC) File No. 4665

**Dimensional Information**

✓			Diameter across flats (Nom. in.)	Fitting length (Nom. in.)	TracPipe or CounterStrike Size	Weight (lbs/ft)
Size	P/N					
<input type="checkbox"/> 3/8" x 1/2"	FGP-SFSTF-375		7/8"		3/8"	0.25
<input type="checkbox"/> 1/2"	FGP-SFSTF-500		1"		1/2"	0.29
<input type="checkbox"/> 3/4"	FGP-SFSTF-750		1-1/4"		3/4"	0.43
<input type="checkbox"/> 1"	FGP-FSTF-1000		1-3/4"		1"	0.78

OmegaFlex, Inc. \* 451 Creamery Way\* Exton, PA 19341

Tel: 610-524-7272 \* Toll Free: 800-671-8622 \* Fax: 610-524-7282

www.omegaflex.com

FGP-SUB-038

Rev. 03-15

TracPipe, Counterstrike, PS-II, AutoFlare, and AutoTrip are registered trademarks of OmegaFlex, Inc.

page 1/1

**Product**

**AutoSnap® Coupling Assembly for TracPipe and CounterStrike**

**Project Information**

Job Name:	Date Submitted:
Location:	Submitted By:
Engineer:	Approved By:
Contractor:	Manufacturer's Rep:

**Installation**

Must be installed in accordance with the TracPipe Design Guide and Installation Instructions and all applicable codes

**Application Information**

Coupling fitting for use between like sizes of TracPipe or CounterStrike Tubing.  
For indoor, outdoor, and concealed location applications.

**Technical Data**

Materials

Nut, Adapter, and Snap Ring                      Yellow Brass

Pressure Ratings (used with tubing)

Specification Operating Pressure	25 PSIG
CSA International Evaluation Report - Max Operating Pressure, 3/8" through 1-1/4"	125 PSIG

Temperature Ratings (used with tubing)

Operating Temperature Range	-20 to 200 Deg F
-----------------------------	------------------



**Codes**

ICC Codes (IFGC, IRC, IMC, IPC), NFPA 54, UPC, CAN/CSA B149.1, NFPA 58

**Standards**

ANSI LC1 / CSA 6.26, ANSI Z223.1

**Listings**

CSA

**Dimensional Information**

✓			Diameter across flats (Nom. in.)	Fitting length (Nom. in.)	TracPipe or CounterStrike Size	Weight (lbs)
Size	P/N					
<input type="checkbox"/> 3/8"	FGP-SCPLG-375		15/16"	2-3/8"	3/8" X 3/8"	0.3
<input type="checkbox"/> 1/2"	FGP-SCPLG-500		1-1/8"	2-3/4"	1/2" X 1/2"	0.5
<input type="checkbox"/> 3/4"	FGP-SCPLG-750		1-3/8"	2-7/8"	3/4" X 3/4"	0.7
<input type="checkbox"/> 1"	FGP-SCPLG-1000		1-3/4"	3-1/8"	1" X 1"	0.9
<input type="checkbox"/> 1-1/4"	FGP-SCPLG-1250		2"	3-1/2"	1-1/4" X 1-1/4"	2.0
<input type="checkbox"/> 1-1/2"	FGP-SCPLG-1500		2-3/8"	4"	1-1/2" X 1-1/2"	3.3
<input type="checkbox"/> 2"	FGP-SCPLG-2000		2-7/8"	4-5/8"	2" X 2"	5.5

Omega Flex, Inc. \* 451 Creamery Way\* Exton, PA 19341

Tel: 610-524-7272 \* Toll Free: 800-671-8622 \* Fax: 610-524-7282

www.omegaflex.com

**Product**

**AutoSnap® Steel Flange Mount for TracPipe and CounterStrike**

**Project Information**

Job Name:	Date Submitted:
Location:	Submitted By:
Engineer:	Approved By:
Contractor:	Manufacturer's Rep:

**Installation**

Must be installed in accordance with the TracPipe Design Guide and Installation Instructions and all applicable codes

**Mounting**

Termination fitting between TracPipe or CounterStrike Tubing and NPT thread. Fitting thread is Male NPT. For use indoor, outdoor, and concealed location applications.

**Technical Data**

Materials

Nut, Adapter, and Snap Ring	Yellow Brass
Mounting Flange	Steel

Pressure Ratings (used with tubing)

Specification Operating Pressure	25 PSIG
CSA International Evaluation Report - Max Operating Pressure, 3/8" through 1-1/4"	125 PSIG

Temperature Ratings (used with tubing)

Operating Temperature Range	-20 to 200 Deg F
-----------------------------	------------------



**Codes**

ICC Codes (IFGC, IRC, IMC, IPC), NFPA 54, UPC, CAN/CSA B149.1, NFPA 58

**Standards**

ANSI LC1 / CSA 6.26, ANSI Z223.1

**Listings**

CSA

**Dimensional Information**

✓			Diameter across flats (Nom. in.)	Fitting length (Nom. in.)	TracPipe or CounterStrike Size	Weight (lbs)
Size	P/N					
<input type="checkbox"/> 3/8"	FGP-SRFG-375		15/16"	2-3/8"	3/8" X 3/8"	0.3
<input type="checkbox"/> 1/2"	FGP-SRFG-500		1-1/8"	2-3/4"	1/2" X 1/2"	0.5
<input type="checkbox"/> 3/4"	FGP-SRFG-750		1-3/8"	2-7/8"	3/4" X 3/4"	0.7
<input type="checkbox"/> 1"	FGP-SRFG-1000		1-3/4"	3-1/8"	1" X 1"	0.9
<input type="checkbox"/> 1-1/4"	FGP-SRFG-1250		2"	3-1/2"	1-1/4" X 1-1/4"	2.0

Omega Flex, Inc. \* 451 Creamery Way\* Exton, PA 19341

Tel: 610-524-7272 \* Toll Free: 800-671-8622 \* Fax: 610-524-7282

www.omegaflex.com

**Product**

**Metal Wall Box with 90° AutoSnap® Valve Assembly for use with TracPipe and CounterStrike**

**Project Information**

Job Name:	Date Submitted:
Location:	Submitted By:
Engineer:	Approved By:
Contractor:	Manufacturer's Rep:

**Installation**

Must be installed in accordance with the TracPipe Design Guide and Installation Instructions and all applicable codes

**Application Information**

Metal wall box with valve for use with zero clearance appliance installations. Reverse Mounting tabs to accommodate double sheetrock walls. For Indoor Use Only. Wall Box is Fire Rated to UL 1479.

**Technical Data**

Materials

Nut, Adapter and Snap Ring	Yellow Brass
Wall Box	Powder Coated Steel

Pressure Ratings (used with tubing)

Specification Operating Pressure	1/2 PSIG
Max Test Pressure	60 PSIG

Temperature Ratings (used with tubing)

Operating Temperature Range	-20 to 200 Deg F
-----------------------------	------------------



**Codes**

ICC Codes (IFGC, IRC, IMC, IPC), NFPA 54, UPC, CAN/CSA B149.1, NFPA 58

**Standards**

ANSI LC1 / CSA 6.26, ANSI Z21.15, ANSI Z223.1, UL 1479

**Listings**

CSA, ICC PMG 1046 / 1058

**Dimensional Information**

✓			Diameter across flats (Nom. in.)		Box Dim L x H x		Valve Outlet	TracPipe or CounterStrike	
	Size	P/N	Nut	Valve Body	D	Trim Ring Dim	NPT	Size	Weight (lbs)
<input type="checkbox"/>	1/2"	FGP-SWBTM-500	1-1/8"	1-1/8"	5" x 5" x 3-1/8"	6-3/4" x 6-3/4"	1/2"	1/2"	2.3
<input type="checkbox"/>	3/4"	FGP-SWBTM-750	1-3/8"	1-3/8"	5" x 5" x 3-1/8"	6-3/4" x 6-3/4"	3/4"	3/4"	2.8

Omega Flex, Inc. \* 451 Creamery Way\* Exton, PA 19341

Tel: 610-524-7272 \* Toll Free: 800-671-8622 \* Fax: 610-524-7282

www.omegaflex.com

**Product**
**AutoSnap Tee Fitting Tubing by Pipe Outlet for TracPipe and CounterStrike**
**Project Information**

Job Name:	Date Submitted:
Location:	Submitted By:
Engineer:	Approved By:
Contractor:	Manufacturer's Rep:

**Installation**

Must be installed in accordance with the TracPipe Design Guide and Installation Instructions and all applicable codes

**Application Information**

AutoSnap Tee fittings for TracPipe and CounterStrike. Tubing Runs by Pipe Branch.  
Branch Thread is NPT

**Technical Data**
Materials

Nut, Adapter, and Snap Ring                      Yellow Brass

Pressure Ratings (used with tubing)

Specification Operating Pressure	25 PSIG
CSA International Evaluation Report - Max Operating Pressure	125 PSIG

Temperature Ratings (used with tubing)

Operating Temperature Range	-20 to 200 Deg F
-----------------------------	------------------


**Codes**

ICC Codes (IFGC, IRC, IMC, IPC), NFPA 54, UPC, CAN/CSA B149.1, NFPA 58

**Standards**

ANSI LC1 / CSA 6.26, ANSI Z223.1

**Listings**

CSA, ICC PMG 1046 / 1058, IAPMO (UPC) File No. 3682 / ES ER-0227

**Dimensional Information**

✓								
	Size	P/N	NPT Size	Diameter across flats (Nom. in.)	TracPipe or CounterStrike Size	*Overall Length (Nom. in.)	*Height (Nom. In.)	Weight (lbs)
☐	1/2"	FGP-ST500-750	3/4" M-NPT	1-1/8"	1/2"	4.10	2.07	0.9
☐	1/2"	FGP-ST500-500	1/2" F-NPT	1-1/8"	1/2"	3.70	1.85	0.8
☐	3/4"	FGP-ST750-500	1/2" F-NPT	1-3/8"	3/4"	4.01	2.09	1.1
☐	3/4"	FGP-ST750-750	3/4" F-NPT	1-3/8"	3/4"	3.96	2.12	1.0
☐	1"	FGP-ST1000-1000	1" F-NPT	1-3/4"	1"	4.76	2.67	2.0

**Product**
**AutoSnap Tee Fitting Tubing by Tubing for TracPipe and CounterStrike**
**Project Information**

Job Name:	Date Submitted:
Location:	Submitted By:
Engineer:	Approved By:
Contractor:	Manufacturer's Rep:

**Installation**

Must be installed in accordance with the TracPipe Design Guide and Installation Instructions and all applicable codes

**Application Information**

AutoSnap Tee fittings for TracPipe and CounterStrike. Tubing by Tubing Runs.  
Branch is Tubing.

**Technical Data**
**Materials**

Nut, Adapter, and Snap Ring                      Yellow Brass

**Pressure Ratings (used with tubing)**

Specification Operating Pressure	25 PSIG
CSA International Evaluation Report - Max Operating Pressure	125 PSIG

**Temperature Ratings (used with tubing)**

Operating Temperature Range	-20 to 200 Deg F
-----------------------------	------------------


**Codes**

ICC Codes (IFGC, IRC, IMC, IPC), NFPA 54, UPC, CAN/CSA B149.1, NFPA 58

**Standards**

ANSI LC1 / CSA 6.26, ANSI Z223.1

**Listings**

CSA, ICC PMG 1046 / 1058, IAPMO (UPC) File No. 3682 / ES ER-0227

**Dimensional Information**

✓		R X R X B Sizes			*Overall		
		TracPipe or CounterStrike	Diameter across Hex flats R		Length	*Height	
Size	P/N	Sizes	X R X B	(Nom. in.)	(Nom. in.)	(Nom. In.)	Weight (lbs)
<input type="checkbox"/> 1/2"	FGP-STF500-T500	1/2" X 1/2" x 1/2"	1-1/8" x 1-1/8" x 1-1/8"		3.64	2.39	0.9
<input type="checkbox"/> 3/4"	FGP-STF750-T500	3/4" X 3/4" x 3/4"	1-3/8" x 1-3/8" x 1-3/8"		4.08	2.60	1.1
<input type="checkbox"/> 1"	FGP-STF1000-T1000	1" X 1" x 1"	1-3/4" x 1-3/4" x 1-3/4"		4.44	3.19	2.2
<input type="checkbox"/> 1/2"	FGP-SRT-501	1/2" X 3/8" X 3/8"	1-1/8" x 15/16" x 15/16"		3.88	2.52	0.8
<input type="checkbox"/> 3/4"	FGP-SRT-751	3/4" X 1/2" X 3/8"	1-3/8" x 1-1/8" x 15/16"		4.14	2.71	1.0
<input type="checkbox"/> 3/4"	FGP-SRT-752	3/4" X 1/2" X 1/2"	1-3/8" x 1-1/8" x 1-1/8"		3.89	2.64	1.0
<input type="checkbox"/> 1"	FGP-SRT-1001	1" X 3/4" X 1/2"	1-3/4" x 1-3/8" x 1-1/8"		4.41	2.98	2.0
<input type="checkbox"/> 1"	FGP-SRT-1002	1" X 3/4" X 3/4"	1-3/4" x 1-3/8" x 1-3/8"		4.43	3.04	2.0
<input type="checkbox"/> 3/4"	FGP-STF750-T500	3/4" X 3/4" X 1/2"	1-3/8" x 1-3/8" x 1-1/8"		4.10	2.60	1.1
<input type="checkbox"/> 1"	FGP-STF1000-T750	1" X 1" X 3/4"	1-3/4" x 1-3/4" x 1-3/8"		4.47	3.10	2.1
<input type="checkbox"/> 1"	FGP-STF1000-T500	1" X 1" X 1/2"	1-3/4" x 1-3/4" x 1-1/8"		4.45	2.99	2.1

*\*Note: Overall Length (OAL) and Height dimensions shown as 2 decimal are NOMINAL dimensions ONLY.*

Omega Flex, Inc. \* 451 Creamery Way\* Exton, PA 19341

Tel: 610-524-7272 \* Toll Free: 800-671-8622 \* Fax: 610-524-7282

www.omegaflex.com

**Product**
**Self Bonding Silicone Tape - Black**
**Project Information**

Job Name:	Date Submitted:
Location:	Submitted By:
Engineer:	Approved By:
Contractor:	Manufacturer's Rep:

**Installation**

Must be installed in accordance with the TracPipe Design Guide and Installation Instructions and all applicable codes

**Application Information**

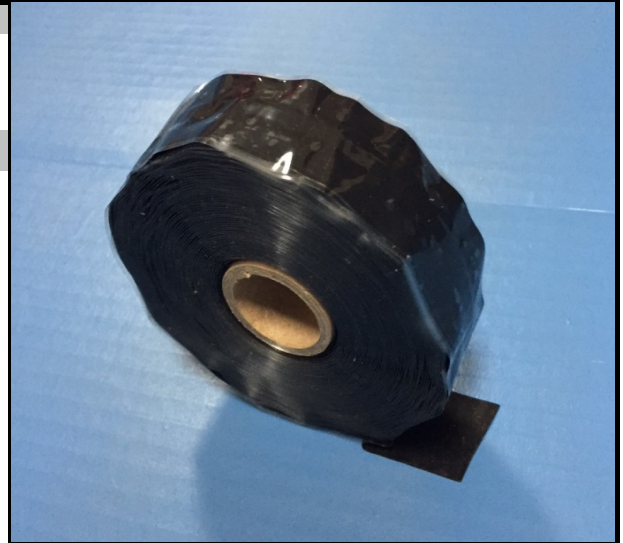
Apply tape in accordance with section 4.3.2 of the TracPipe Design and Installation Guide

**Technical Data**
Materials

Silicone Rubber - No adhesives permitted

Temperature Ratings

Operating Temperature Range                      -65 to 260 Deg F


**Codes**
**Standards**
**Listings**
**Dimensional Information**

✓	Pipe / Fitting Size	P/N	Width	Roll Length	tape thickness (in.)
	All	FGP-915-10H-12BL	1 inch	12 yds	0.020

OmegaFlex, Inc. \* 451 Creamery Way\* Exton, PA 19341

Tel: 610-524-7272 \* Toll Free: 800-671-8622 \* Fax: 610-524-7282

[www.omegaflex.com](http://www.omegaflex.com)



**Product**
**AutoFlare® Steel Flange Mount for TracPipe and CounterStrike**
**Project Information**

Job Name:	Date Submitted:
Location:	Submitted By:
Engineer:	Approved By:
Contractor:	Manufacturer's Rep:

**Installation**

Must be installed in accordance with the TracPipe Design Guide and Installation Instructions and all applicable codes

**Mounting**

Termination fitting between TracPipe or CounterStrike Tubing and NPT thread.  
Fitting thread is Male NPT. For use indoor, outdoor, and concealed location applications.

**Technical Data**
Materials

Nut, Adapter, and Split Rings	Yellow Brass
Insert and 1" Split Rings	Stainless Steel
Mounting Flange	Steel, black E-coated

Pressure Ratings (used with tubing)

Specification Operating Pressure	25 PSIG
CSA International Evaluation Report - Max Operating Pressure, 3/8" through 1-1/4"	125 PSIG

Temperature Ratings (used with tubing)

Operating Temperature Range	-20 to 200 Deg F
-----------------------------	------------------

**Codes**

ICC Codes (IFGC, IRC, IMC, IPC), NFPA 54, UPC, CAN/CSA B149.1, NFPA 58

**Standards**

ANSI LC1 / CSA 6.26, ANSI Z223.1

**Listings**

CSA

**Dimensional Information**

✓			Diameter across flats (Nom. in.)	Fitting length (Nom. in.)	TracPipe or CounterStrike x M-NPT Size	Plate size l x w (in.)	Weight (lbs)
Size	P/N						
<input type="checkbox"/> 3/8"	FGP-RFG-375		15/16	2-3/8	3/8" X 3/8"	3-1/4 x 2-3/4	0.3
<input type="checkbox"/> 1/2"	FGP-RFG-500		1-1/8	2-3/4	1/2" X 1/2"	3-1/4 x 2-3/4	0.5
<input type="checkbox"/> 3/4"	FGP-RFG-750		1-3/8	2-7/8	3/4" X 3/4"	3-1/4 x 2-3/4	0.7
<input type="checkbox"/> 1"	FGP-RFG-1000		1-3/4	3-1/8	1" X 1"	3-1/4 x 2-3/4	0.9
<input type="checkbox"/> 1-1/4"	FGP-RFG-1250		2	3-1/2	1-1/4" X 1-1/4"	3-1/4 x 2-3/4	2.0



Omega Flex, Inc. \* 451 Creamery Way\* Exton, PA 19341

Tel: 610-524-7272 \* Toll Free: 800-671-8622 \* Fax: 610-524-7282

www.omegaflex.com

FGP-SUB-045

Rev. 11-19

TracPipe, CounterStrike, PS-II, AutoFlare, AutoSnap and AutoTrip are registered trademarks of Omega Flex, Inc.

page 1/1

**Product**

**90° AutoFlare® Steel Flange Mount for TracPipe and CounterStrike**

**Project Information**

Job Name:	Date Submitted:
Location:	Submitted By:
Engineer:	Approved By:
Contractor:	Manufacturer's Rep:

**Installation**

Must be installed in accordance with the TracPipe Design Guide and Installation Instructions and all applicable codes

**Mounting**

Termination fitting between TracPipe or CounterStrike Tubing and NPT thread.  
Fitting thread is Male NPT. For use indoor, outdoor, and concealed location applications.

**Technical Data**

Materials

Nut, Adapter, and Split Rings	Yellow Brass
Insert and 1" Split Rings	Stainless Steel
Mounting Flange	Steel, black E-coated

Pressure Ratings (used with tubing)

Specification Operating Pressure	25 PSIG
CSA International Evaluation Report - Max Operating Pressure, 3/8" through 1-1/4"	125 PSIG

Temperature Ratings (used with tubing)

Operating Temperature Range	-20 to 200 Deg F
-----------------------------	------------------

**Codes**

ICC Codes (IFGC, IRC, IMC, IPC), NFPA 54, UPC, CAN/CSA B149.1, NFPA 58

**Standards**

ANSI LC1 / CSA 6.26, ANSI Z223.1

**Listings**

CSA

**Dimensional Information**

✓			Diameter across flats (Nom. in.)	Fitting length (Nom. in.)	TracPipe or CounterStrike x M-NPT Size	Plate size l x w (in.)	Weight (lbs)
	Size	P/N					
☐	1/2"	FGP-ELS-500	1-1/8	2-11/16	1/2" x 1/2"	3-1/4 x 2-3/4	0.6



Omega Flex, Inc. \* 451 Creamery Way\* Exton, PA 19341

Tel: 610-524-7272 \* Toll Free: 800-671-8622 \* Fax: 610-524-7282

www.omegaflex.com

FGP-SUB-046

Rev. 12-19

TracPipe, CounterStrike, PS-II, AutoFlare, AutoSnap and AutoTrip are registered trademarks of Omega Flex, Inc.

page 1/1

## Product

### 90° AutoFlare® Steel Flange Mount (Valve - Female NPT) Assembly for TracPipe and CounterStrike

## Project Information

Job Name:	Date Submitted:
Location:	Submitted By:
Engineer:	Approved By:
Contractor:	Manufacturer's Rep:

## Installation

Must be installed in accordance with the TracPipe Design Guide and Installation Instructions and all applicable codes

## Mounting

Termination fitting between TracPipe or CounterStrike Tubing with appliance shut-off valve and NPT thread. Fitting thread is Female NPT. For use indoor, outdoor, and concealed location applications.

## Technical Data

### Materials

Nut, Adapter, and Split Rings	Yellow Brass
Insert and 1" Split Rings	Stainless Steel
Mounting Flange	Steel, black E-coated
Valve Body	Plated Brass

### Pressure Ratings (used with tubing)

Specification Operating Pressure	1/2 PSIG
Max Test Pressure	60 PSIG

### Temperature Ratings (used with tubing)

Operating Temperature Range	32 to 125 Deg F
-----------------------------	-----------------

## Codes

ICC Codes (IFGC, IRC, IMC, IPC), NFPA 54, UPC, CAN/CSA B149.1, NFPA 58

## Standards

ANSI LC1 / CSA 6.26, ANSI Z21.15, ANSI Z223.1

## Listings

CSA

## Dimensional Information

			Diameter across flats (Nom. in.)	Fitting Height (Nom. in.)	TracPipe or CounterStrike x M-NPT Size	Plate size l x w (in.)	Weight (lbs)
✓			Size	P/N			
<input type="checkbox"/>	3/8"	FGP-RF90V-375	1	3-1/2	3/8" x 1/2"	3-1/4 x 2-3/4	1.3
<input type="checkbox"/>	1/2"	FGP-RF90V-500	1-1/8	3-3/4	1/2" x 1/2"	3-1/4 x 2-3/4	1.3
<input type="checkbox"/>	3/4"	FGP-RF90V-750	1-3/8	4-9/16	3/4" x 3/4"	3-1/4 x 2-3/4	1.7



Omega Flex, Inc. \* 451 Creamery Way\* Exton, PA 19341

Tel: 610-524-7272 \* Toll Free: 800-671-8622 \* Fax: 610-524-7282

www.omegaflex.com

**Product**
**Floppy Galvanized Steel Conduit**
**Project Information**

Job Name:	Date Submitted:
Location:	Submitted By:
Engineer:	Approved By:
Contractor:	Manufacturer's Rep:

**Installation**

Must be installed in accordance with the TracPipe Design Guide and Installation Instructions and all applicable codes

**Application Information**

Provides supplemental/additional puncture protection to hardened striker plates.  
 Applications include horizontal runs and at termination points.

**Technical Data**
**Materials**

Galvanized Steel

**Pressure Ratings (used with tubing)**

N/A

**Temperature Ratings (used with tubing)**

Operating Temperature Range

N/A


**Codes**

ICC Codes (IFGC, IRC, IMC, IPC), NFPA 54, UPC, CAN/CSA B149.1, NFPA 58, UPC

**Standards**

ANSI LC1 / CSA 6.26, ANSI Z223.1, Complies with UL-1 File number E25633, Federal Specification WW-C-566C

**Listings**

CSA, ICC PMG 1046/1052/1058, IAPMO (UPC) File No.3682 / 4665 / ES ER-0227

**Dimensional Information**

✓	Fits CSST pipe size	P/N	Conduit Size	Conduit OD Max. (in.)	Rec'd Min. Drill Hole Size (in.)	Pkg. Qty.	Weight (lbs) per box or coil
<input type="checkbox"/>	3/8"	FGP-FPY-375CT	3/4"	1.105	1-1/2	50 / box	11.0
<input type="checkbox"/>	1/2"	FGP-FPY-500CT	1"	1.380	1-3/4	50 / box	15.0
<input type="checkbox"/>	3/4"	FGP-FPY-750CT	1-1/4"	1.630	2-1/8	25 / box	17.5
<input type="checkbox"/>	1"	FGP-FPY-1000CT	1-1/2"	1.950	2-1/2	25 / box	24.0
<input type="checkbox"/>	3/8"	FGP-FPY-375-50	3/4"	1.105	1-1/2	50 ft coil	9.0
<input type="checkbox"/>	1/2"	FGP-FPY-500-50	1"	1.380	1-3/4	50 ft coil	13.0
<input type="checkbox"/>	3/4"	FGP-FPY-750-25	1-1/4"	1.630	2-1/8	25 ft coil	15.5
<input type="checkbox"/>	1"	FGP-FPY-1000-25	1-1/2"	1.950	2-1/2	25 ft coil	22.0
<input type="checkbox"/>	1-1/4"	FGP-FPY-1250-25	2"	2.450	3	25 ft coil	28.5
<input type="checkbox"/>	1-1/2"	FGP-FPY-1500-25	2-1/2"	3.060	3-1/2	25 ft coil	46.0
<input type="checkbox"/>	2"	FGP-FPY-2000-25	3"	3.560	4	25 ft coil	51.0

Omega Flex, Inc. \* 451 Creamery Way\* Exton, PA 19341

Tel: 610-524-7272 \* Toll Free: 800-671-8622 \* Fax: 610-524-7282

www.omegaflex.com

FGP-SUB-048

Rev. 10-21

TracPipe, CounterStrike, PS-II, AutoFlare, and AutoTrip are registered trademarks of Omega Flex, Inc.

page 1/1